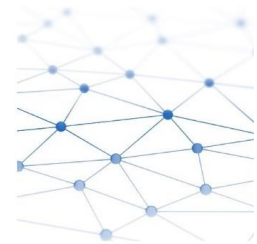
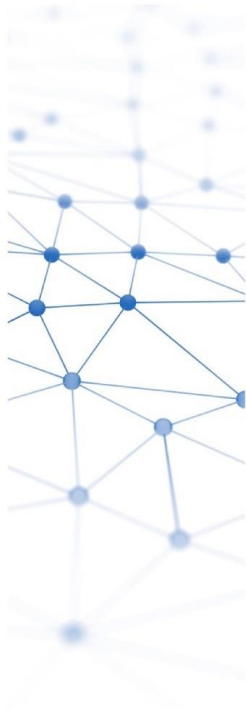


Daily Trading Report

28 November 2021



Market Overview

Figure 1: Forecasted Demand vs USEP

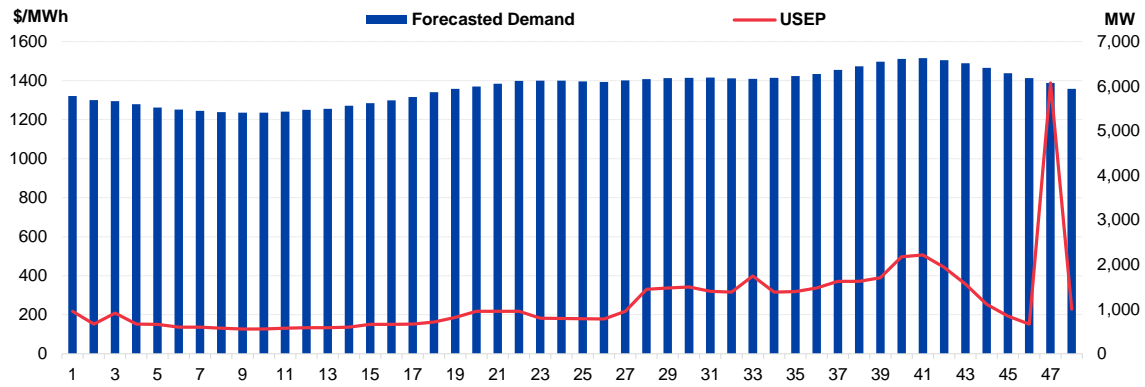


Figure 2: Periodic Ancillary Prices

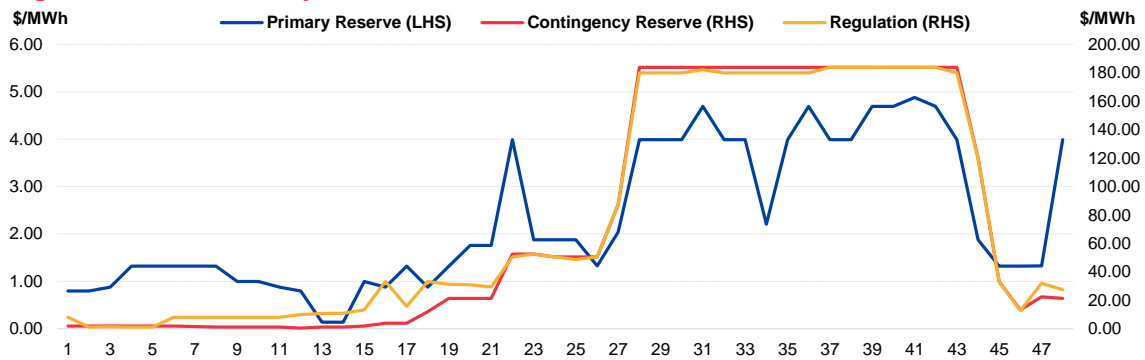


Figure 3: Daily Data Comparison

	Forecasted Demand (MW)	Total Supply (MW)	Energy Price (\$/MWh)
PHDay Ranking*	7 out of 1194	237 out of 1194	15 out of 1194
Daily Average	5,985	7,593	263.14
Previous day	6,129	7,490	594.20
Change (%)	-2.4%	1.4%	-55.7%
Daily Max	6,629	7,665	1388.06
Previous day	6,606	7,920	3000.18
Change (%)	0.3%	-3.2%	-53.7%
Daily Min	5,404	7,440	126.93
Previous day	5,484	6,642	126.02
Change (%)	-1.5%	12.0%	0.7%

	Primary Reserve Price (\$/MWh)	Contingency Reserve Price (\$/MWh)	Regulation Price (\$/MWh)
Daily Average	2.32	75.07	78.14
Previous day	11.57	21.00	38.76
Change (%)	-79.9%	257.5%	101.6%
Daily Max	4.88	183.83	183.83
Previous day	79.88	185.00	262.39
Change (%)	-93.9%	-0.6%	-29.9%
Daily Min	0.14	0.50	1.20
Previous day	0.59	1.20	8.77
Change (%)	-76.3%	-58.3%	-86.3%

*Ranking denotes the relative position of the market parameter since 1 Jan 2003.

Market Overview

Figure 4: Seven Days of Daily USEP vs Daily Forecasted Demand

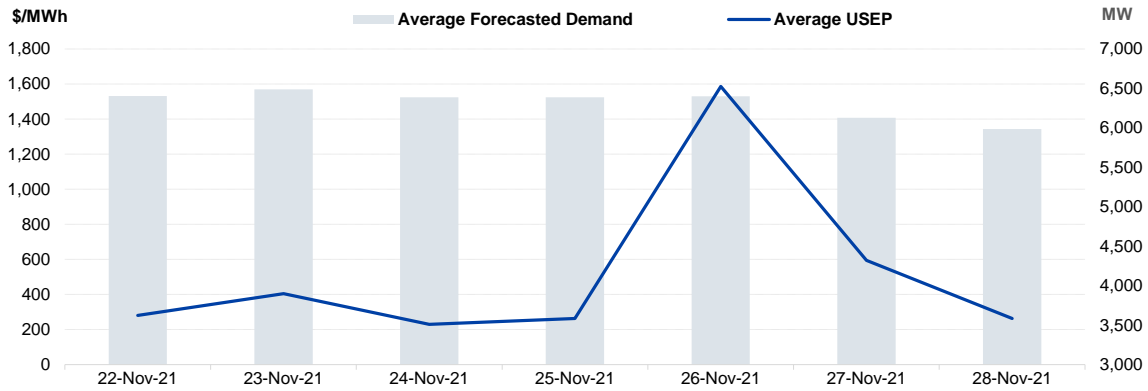


Figure 5: Seven Days USEP Average-Max-Min

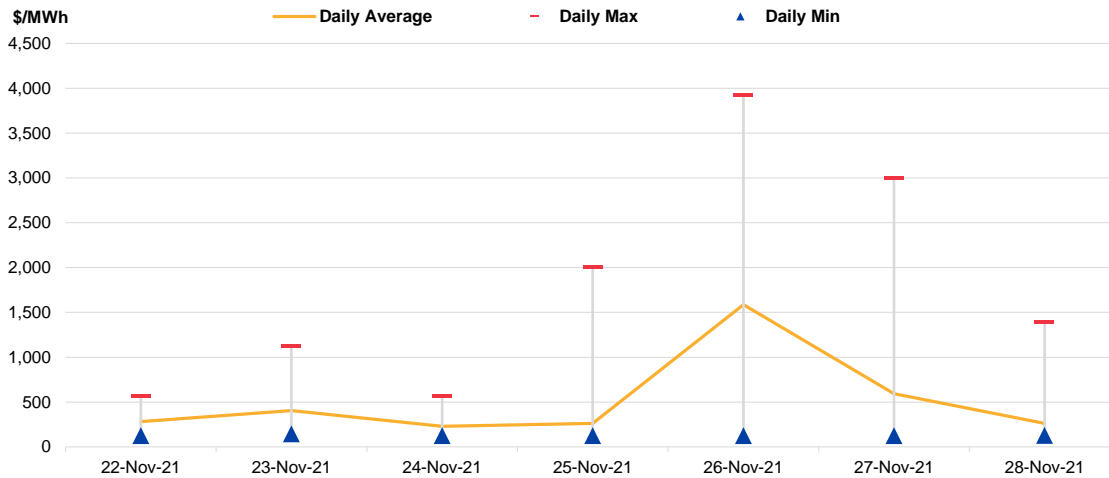
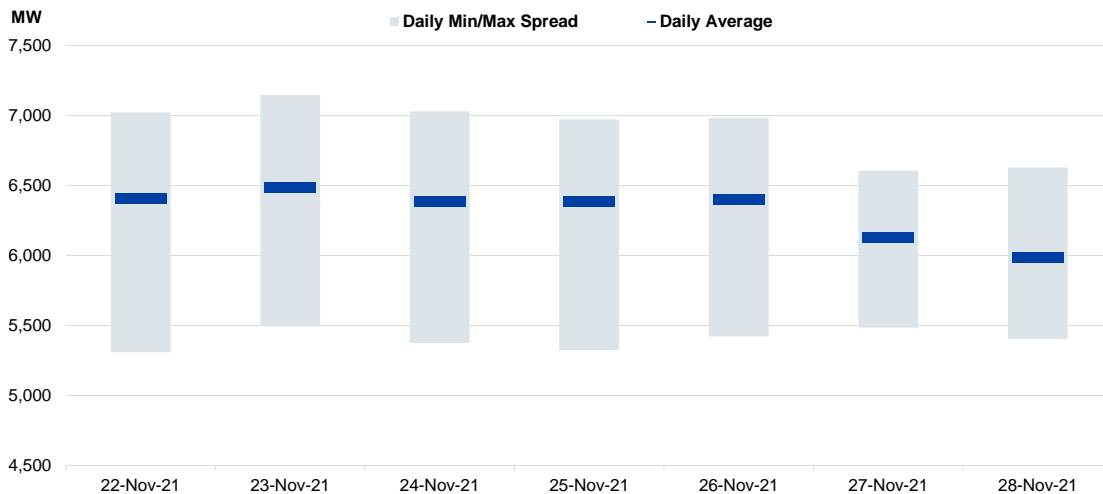


Figure 6: Seven Days Forecasted Demand Average-Max-Min



Market Overview

Figure 7: Daily Generation Plant Utilization Rate

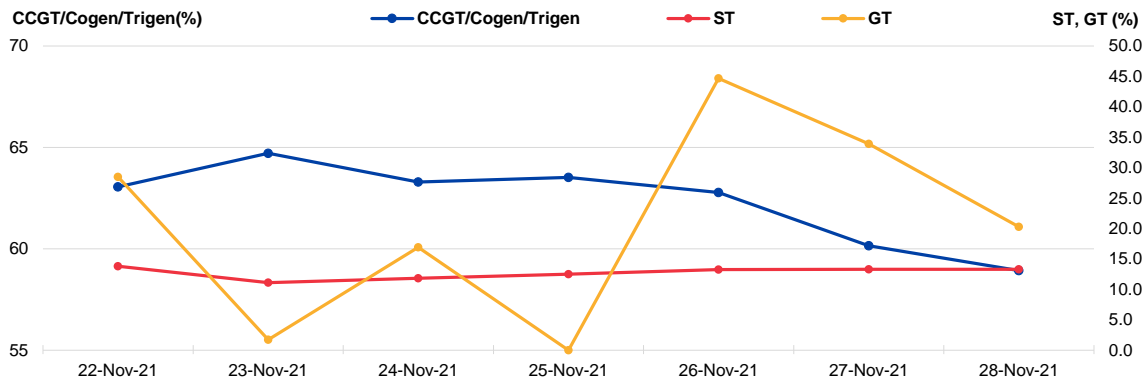


Figure 8: Daily Trading Data Table

	Mon 22-Nov-21	Tue 23-Nov-21	Wed 24-Nov-21	Thu 25-Nov-21	Fri 26-Nov-21	Sat 27-Nov-21	Sun 28-Nov-21
Forecasted Demand (MW)							
Daily Average	6,405	6,490	6,387	6,387	6,402	6,129	5,985
Daily Maximum	7,024	7,148	7,031	6,971	6,981	6,606	6,629
Daily Minimum	5,308	5,493	5,375	5,323	5,422	5,484	5,404
Total Supply (MW)							
Daily Average	7,951	8,278	7,769	7,790	7,730	7,490	7,593
Daily Maximum	8,310	8,455	8,278	8,114	8,177	7,920	7,665
Daily Minimum	7,492	7,595	7,056	7,392	7,341	6,642	7,440
Energy Price (\$/MWh)							
Daily Average	281.11	404.64	229.69	262.68	1586.44	594.20	263.14
Daily Maximum	562.41	1123.63	561.54	2000.51	3921.79	3000.18	1388.06
Daily Minimum	124.36	144.78	126.02	125.77	125.99	126.02	126.93
Reserve & Regulation Prices (\$/MWh)							
Primary	0.69	0.03	0.03	0.05	5.62	11.57	2.32
Contingency	64.26	24.89	13.03	17.94	68.44	21.00	75.07
Regulation	73.63	28.75	16.67	19.84	89.80	38.76	78.14
Reserve & Regulation Requirement (MW)							
Primary	157	159	157	161	163	194	187
Contingency	603	595	595	600	599	622	606
Regulation	114	114	114	114	114	114	114
Generation (MW)							
CCGT/Cogen/Trigen	6,232	6,396	6,255	6,278	6,205	5,944	5,824
ST	159	128	137	144	153	154	154
GT	51	3	30	0	80	61	36

Periodic Trading Data

Figure 9: Periodic Trading Data Table

Period	USEP (\$/MWh)	Forecasted Demand (MW)	CCGT/Cogen/Trigen Generation (MW)	ST Generation (MW)	GT Generation (MW)
1	\$217.39	5,780	5,654	154	0
2	\$151.58	5,687	5,560	154	0
3	\$208.71	5,666	5,538	154	0
4	\$151.50	5,593	5,465	154	0
5	\$151.05	5,519	5,390	154	0
6	\$136.86	5,476	5,346	154	0
7	\$136.29	5,448	5,318	154	0
8	\$131.44	5,418	5,287	154	0
9	\$126.93	5,404	5,274	154	0
10	\$126.94	5,409	5,278	154	0
11	\$131.43	5,431	5,300	154	0
12	\$134.29	5,469	5,338	154	0
13	\$134.28	5,493	5,363	154	0
14	\$136.30	5,560	5,430	154	0
15	\$151.07	5,618	5,489	154	0
16	\$151.09	5,680	5,551	154	0
17	\$151.60	5,756	5,628	154	0
18	\$162.16	5,866	5,739	154	0
19	\$186.78	5,938	5,813	154	0
20	\$217.71	5,992	5,868	154	0
21	\$217.70	6,055	5,931	154	0
22	\$217.74	6,119	5,995	154	0
23	\$182.21	6,123	5,999	154	0
24	\$180.37	6,121	5,998	154	0
25	\$179.86	6,108	5,984	154	0
26	\$178.44	6,095	5,971	154	0
27	\$217.74	6,128	6,004	154	0
28	\$329.98	6,160	6,037	154	0
29	\$336.45	6,180	6,057	154	0
30	\$341.65	6,184	6,011	154	50
31	\$319.75	6,193	5,980	154	90
32	\$315.64	6,178	5,965	154	90
33	\$398.53	6,165	6,042	154	0
34	\$315.58	6,185	6,017	154	45
35	\$318.65	6,230	6,037	154	70
36	\$336.87	6,272	6,080	154	70
37	\$370.70	6,364	6,174	154	70
38	\$370.63	6,445	6,209	154	115
39	\$389.11	6,547	6,269	154	160
40	\$497.72	6,610	6,333	154	160
41	\$505.87	6,629	6,352	154	160
42	\$443.52	6,583	6,306	154	160
43	\$357.16	6,512	6,234	154	160
44	\$252.97	6,408	6,152	154	137
45	\$192.62	6,290	6,124	154	45
46	\$151.42	6,180	6,024	154	34
47	\$1,388.06	6,070	5,859	154	90
48	\$228.48	5,938	5,769	154	45

Disclaimer

This Report is prepared and provided for general information purposes only. Information in this Report was obtained or derived from sources that the Energy Market Company Pte Ltd (EMC) considers reliable. All reasonable care has been taken to ensure that stated facts are accurate and opinions fair and reasonable at time of printing. EMC does not represent that information in this Report is accurate or complete and it should not be relied upon as such. In particular, in presentation of charts, certain assumptions were made which may not be stated therein. As such, EMC assumes no fiduciary responsibility or liability for any construction or interpretation you may take based on the information contained nor for any consequences, financial or otherwise, from transactions where information in this Report may be relied upon. You should make your own appraisal and should consult, to the extent necessary, your own professional advisors to ensure that any decision made based on the information in this Report is suitable for your circumstances.

If you have any specific queries about this Report or its contents, you should contact us at marketoperations-B@emcsg.com