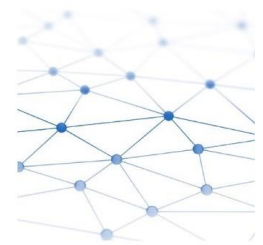
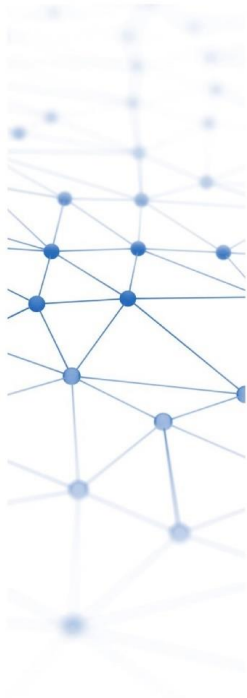


Daily Trading Report

23 October 2021



Market Overview

Figure 1: Forecasted Demand vs USEP

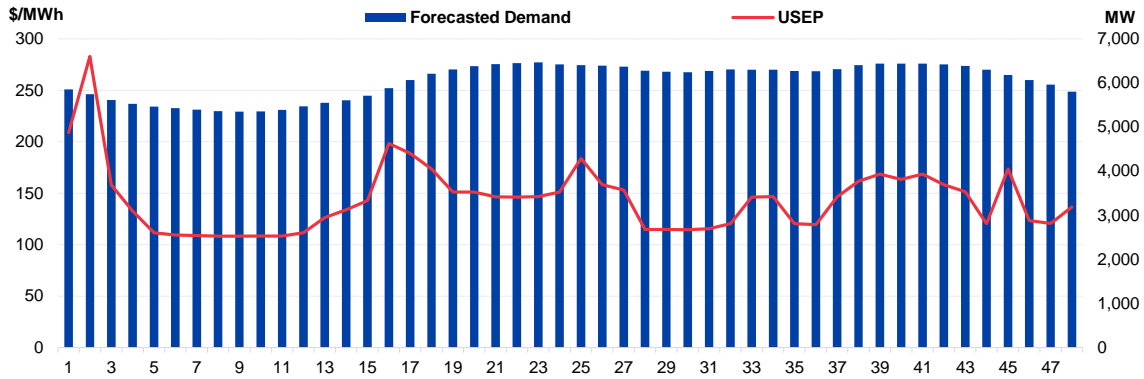


Figure 2: Periodic Ancillary Prices

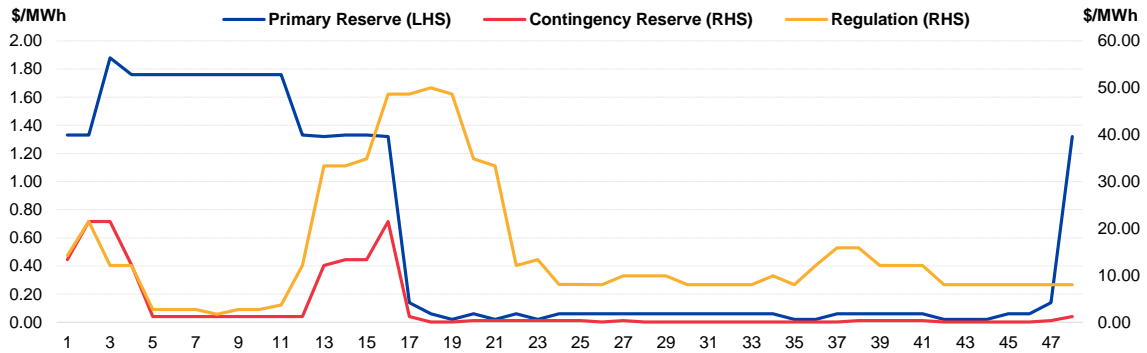


Figure 3: Daily Data Comparison

	Forecasted Demand (MW)	Total Supply (MW)	Energy Price (\$/MWh)
Saturday Ranking*	15 out of 956	96 out of 956	289 out of 956
Daily Average	6,047	7,918	144.06
Previous day	6,334	8,295	151.96
Change (%)	-4.5%	-4.5%	-5.2%
Daily Max	6,467	8,138	282.87
Previous day	6,957	8,523	323.98
Change (%)	-7.0%	-4.5%	-12.7%
Daily Min	5,352	7,791	108.29
Previous day	5,319	8,133	86.13
Change (%)	0.6%	-4.2%	25.7%

	Primary Reserve Price (\$/MWh)	Contingency Reserve Price (\$/MWh)	Regulation Price (\$/MWh)
Daily Average	0.59	3.03	15.04
Previous day	0.20	3.51	9.22
Change (%)	195.0%	-13.6%	63.1%
Daily Max	1.88	21.48	50.00
Previous day	0.88	15.55	21.47
Change (%)	113.6%	38.1%	132.9%
Daily Min	0.02	0.05	1.70
Previous day	0.01	0.05	0.90
Change (%)	100.0%	0.0%	88.9%

*Ranking denotes the relative position of the market parameter since 1 Jan 2003.

Market Overview

Figure 4: Seven Days of Daily USEP vs Daily Forecasted Demand

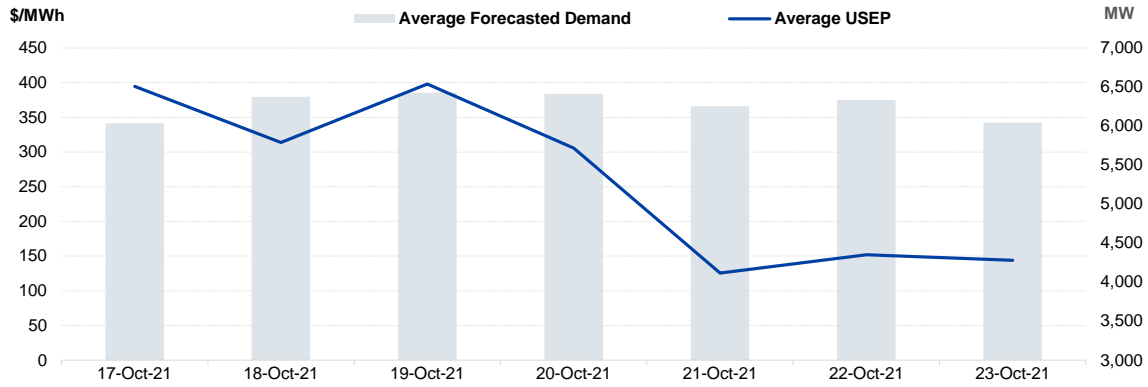


Figure 5: Seven Days USEP Average-Max-Min

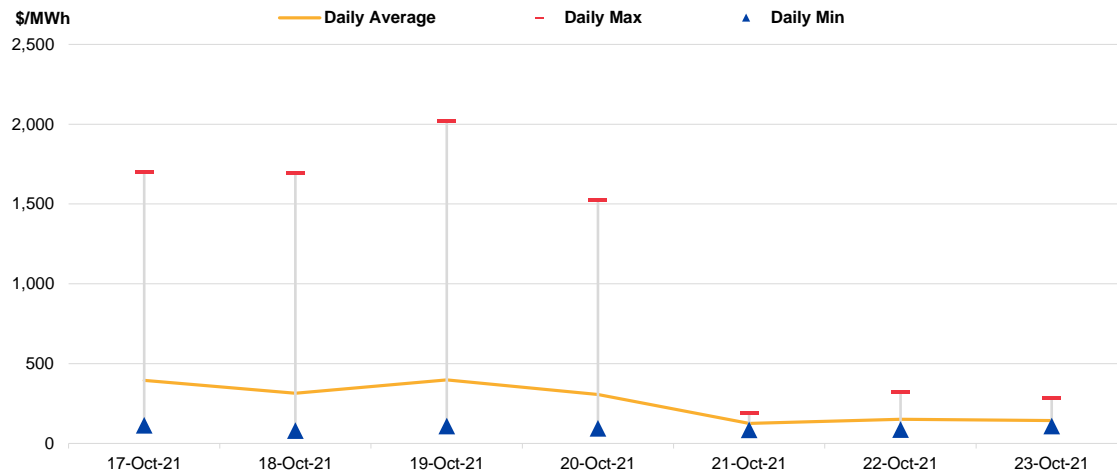
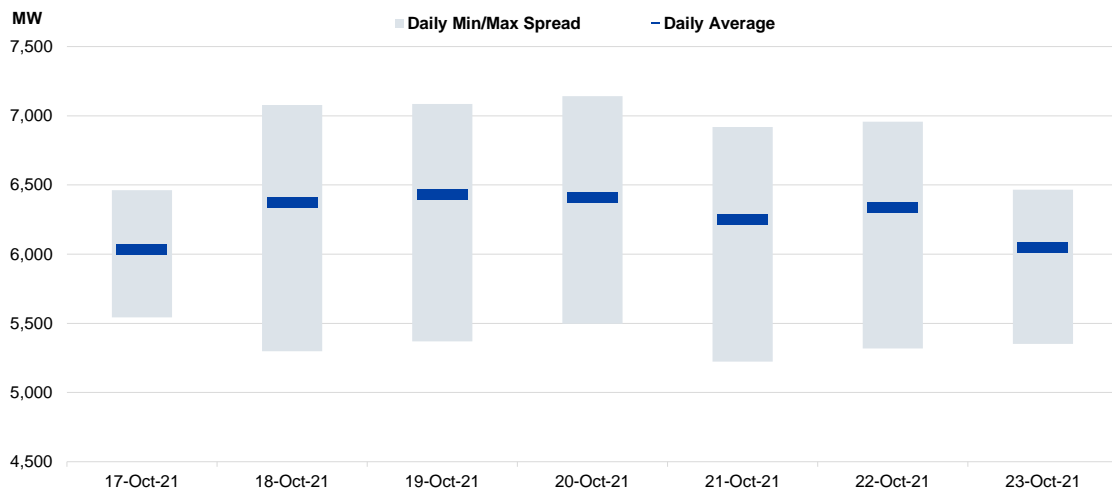


Figure 6: Seven Days Forecasted Demand Average-Max-Min



Market Overview

Figure 7: Daily Generation Plant Utilization Rate

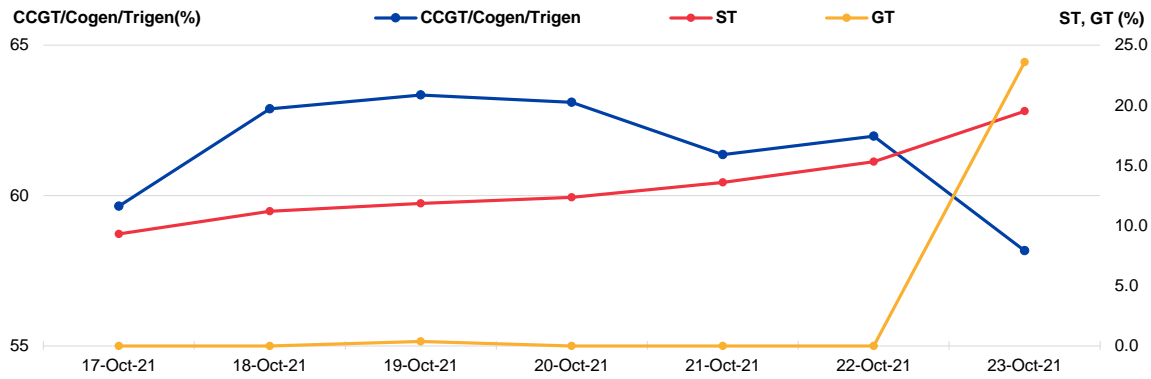


Figure 8: Daily Trading Data Table

	Sun 17-Oct-21	Mon 18-Oct-21	Tue 19-Oct-21	Wed 20-Oct-21	Thu 21-Oct-21	Fri 22-Oct-21	Sat 23-Oct-21
Forecasted Demand (MW)							
Daily Average	6,034	6,376	6,429	6,411	6,252	6,334	6,047
Daily Maximum	6,462	7,077	7,085	7,142	6,919	6,957	6,467
Daily Minimum	5,543	5,298	5,370	5,497	5,223	5,319	5,352
Total Supply (MW)							
Daily Average	8,052	8,324	8,308	8,331	8,215	8,295	7,918
Daily Maximum	8,233	8,456	8,478	8,597	8,347	8,523	8,138
Daily Minimum	7,932	7,940	7,955	8,065	7,967	8,133	7,791
Energy Price (\$/MWh)							
Daily Average	394.80	313.90	398.09	305.75	125.56	151.96	144.06
Daily Maximum	1696.44	1694.23	2016.78	1523.13	192.55	323.98	282.87
Daily Minimum	113.52	79.91	109.30	94.38	84.91	86.13	108.29
Reserve & Regulation Prices (\$/MWh)							
Primary	0.03	0.04	0.07	0.09	0.36	0.20	0.59
Contingency	0.42	1.43	6.48	3.28	2.96	3.51	3.03
Regulation	37.66	7.16	23.56	8.74	15.03	9.22	15.04
Reserve & Regulation Requirement (MW)							
Primary	186	168	160	163	172	167	186
Contingency	606	604	589	599	601	598	616
Regulation	114	114	114	114	114	114	114
Generation (MW)							
CCGT/Cogen/Trigen	5,955	6,278	6,324	6,300	6,126	6,187	5,807
ST	107	129	137	143	157	177	225
GT	0	0	1	0	0	0	42

Periodic Trading Data

Figure 9: Periodic Trading Data Table

Period	USEP (\$/MWh)	Forecasted Demand (MW)	CCGT/Cogen/Trigen Generation (MW)	ST Generation (MW)	GT Generation (MW)
1	\$208.80	5,854	5,654	227	0
2	\$282.87	5,747	5,547	227	0
3	\$157.94	5,614	5,412	227	0
4	\$132.75	5,525	5,322	227	0
5	\$111.51	5,464	5,261	227	0
6	\$109.39	5,427	5,223	227	0
7	\$108.80	5,393	5,189	227	0
8	\$108.29	5,362	5,158	227	0
9	\$108.29	5,352	5,147	227	0
10	\$108.48	5,355	5,151	227	0
11	\$108.40	5,392	5,188	227	0
12	\$111.50	5,472	5,268	227	0
13	\$126.44	5,549	5,346	227	0
14	\$133.85	5,609	5,406	227	0
15	\$142.78	5,713	5,511	227	0
16	\$198.29	5,881	5,680	227	0
17	\$188.81	6,068	5,869	227	0
18	\$173.41	6,209	6,012	227	0
19	\$151.18	6,309	6,072	227	40
20	\$151.21	6,380	6,098	253	60
21	\$146.54	6,429	6,087	283	90
22	\$146.25	6,449	6,094	297	90
23	\$146.75	6,467	6,111	297	90
24	\$151.25	6,419	6,123	237	90
25	\$183.71	6,406	6,164	184	90
26	\$158.25	6,390	6,132	199	90
27	\$153.22	6,370	6,104	207	90
28	\$114.82	6,278	6,001	217	90
29	\$114.79	6,255	5,978	217	90
30	\$114.63	6,244	5,967	217	90
31	\$115.49	6,271	6,014	217	70
32	\$120.48	6,306	6,049	217	70
33	\$146.29	6,303	6,056	217	60
34	\$146.64	6,300	6,053	217	60
35	\$120.49	6,274	6,027	217	60
36	\$119.51	6,267	6,020	217	60
37	\$146.44	6,312	6,066	217	60
38	\$161.62	6,403	6,140	217	78
39	\$168.53	6,439	6,164	217	90
40	\$163.44	6,437	6,163	217	90
41	\$168.51	6,437	6,163	217	90
42	\$158.28	6,419	6,144	217	90
43	\$151.27	6,385	6,110	217	90
44	\$120.55	6,302	6,046	217	70
45	\$173.45	6,182	5,996	217	0
46	\$123.39	6,063	5,876	217	0
47	\$120.73	5,961	5,772	217	0
48	\$136.59	5,802	5,611	217	0

Disclaimer

This Report is prepared and provided for general information purposes only. Information in this Report was obtained or derived from sources that the Energy Market Company Pte Ltd (EMC) considers reliable. All reasonable care has been taken to ensure that stated facts are accurate and opinions fair and reasonable at time of printing. EMC does not represent that information in this Report is accurate or complete and it should not be relied upon as such. In particular, in presentation of charts, certain assumptions were made which may not be stated therein. As such, EMC assumes no fiduciary responsibility or liability for any construction or interpretation you may take based on the information contained nor for any consequences, financial or otherwise, from transactions where information in this Report may be relied upon. You should make your own appraisal and should consult, to the extent necessary, your own professional advisors to ensure that any decision made based on the information in this Report is suitable for your circumstances. If you have any specific queries about this Report or its contents, you should contact us at marketoperations-B@emcsg.com.