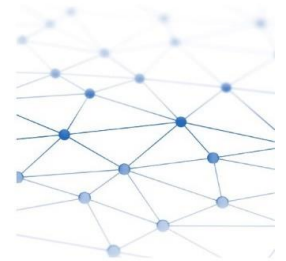
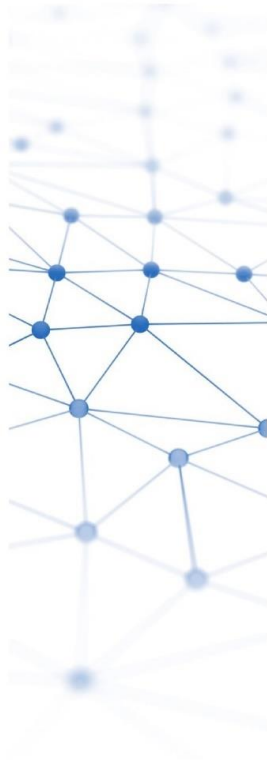
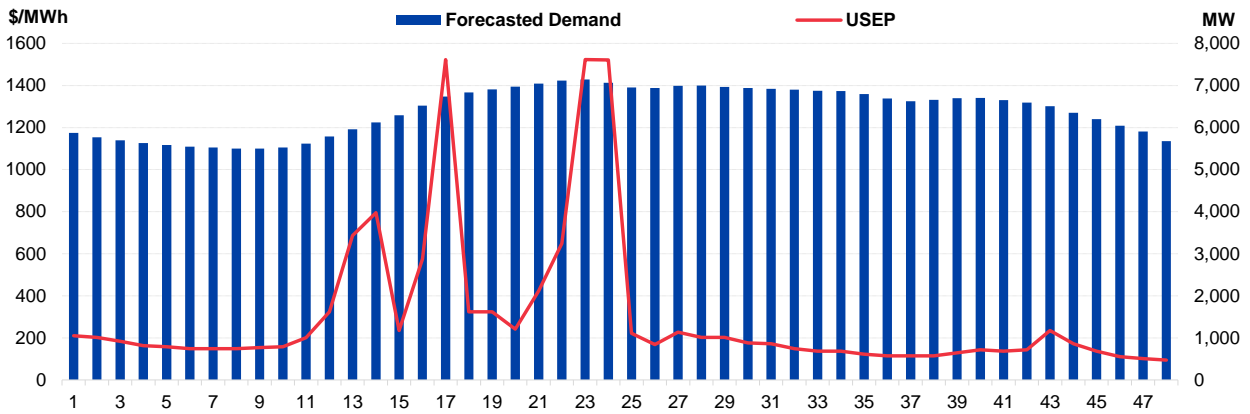


# Daily Trading Report

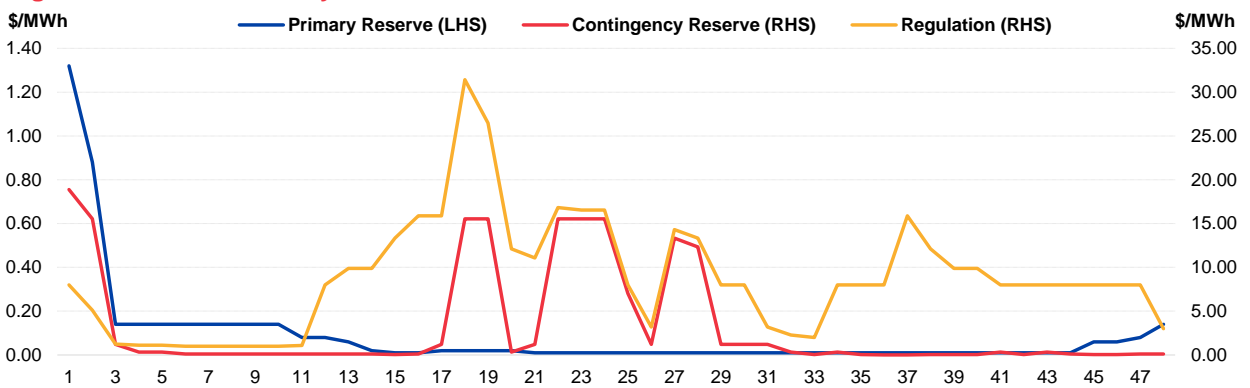
## 20 October 2021



**Figure 1: Forecasted Demand vs USEP**



**Figure 2: Periodic Ancillary Prices**



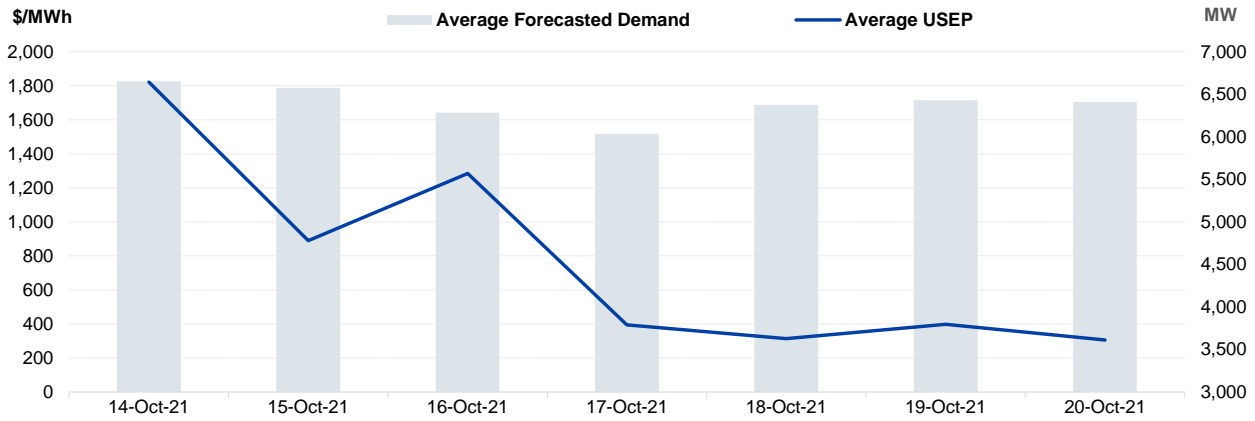
**Figure 3: Daily Data Comparison**

	Forecasted Demand (MW)	Total Supply (MW)	Energy Price (\$/MWh)
Weekday Ranking*	70 out of 4726	305 out of 4726	71 out of 4726
Daily Average	6,411	8,331	305.75
Previous day	6,429	8,308	398.09
Change (%)	-0.3%	0.3%	-23.2%
Daily Max	7,142	8,597	1523.13
Previous day	7,085	8,478	2016.78
Change (%)	0.8%	1.4%	-24.5%
Daily Min	5,497	8,065	94.38
Previous day	5,370	7,955	109.30
Change (%)	2.4%	1.4%	-13.7%

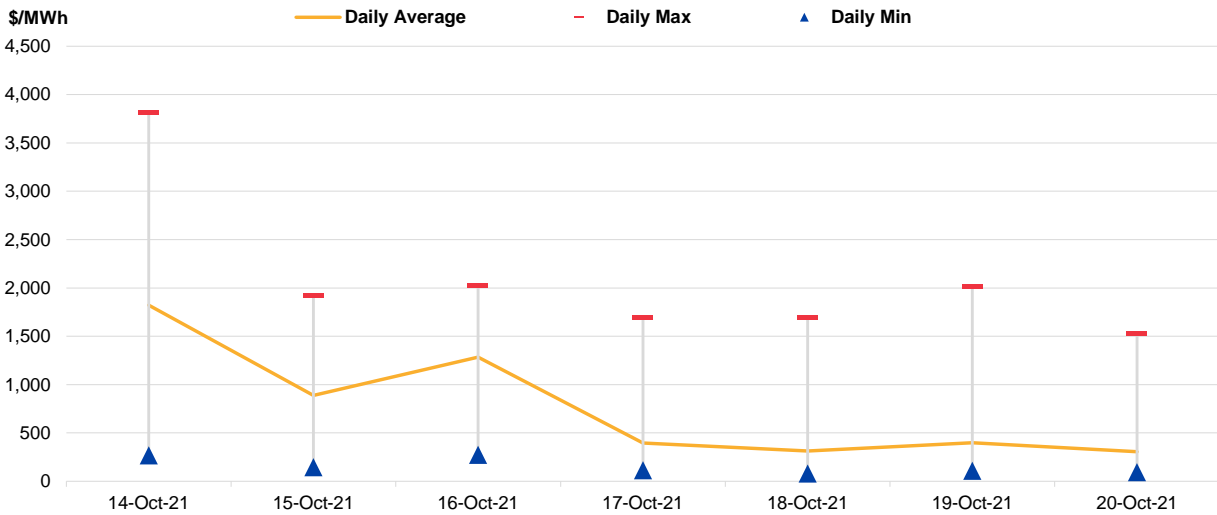
	Primary Reserve Price (\$/MWh)	Contingency Reserve Price (\$/MWh)	Regulation Price (\$/MWh)
Daily Average	0.09	3.28	8.74
Previous day	0.07	6.48	23.56
Change (%)	28.6%	-49.5%	-62.9%
Daily Max	1.32	18.88	31.42
Previous day	0.80	24.05	72.72
Change (%)	65.0%	-21.5%	-56.8%
Daily Min	0.01	0.01	1.00
Previous day	0.01	0.02	0.90
Change (%)	0.0%	-50.0%	11.1%

\*Ranking denotes the relative position of the market parameter since 1 Jan 2003.

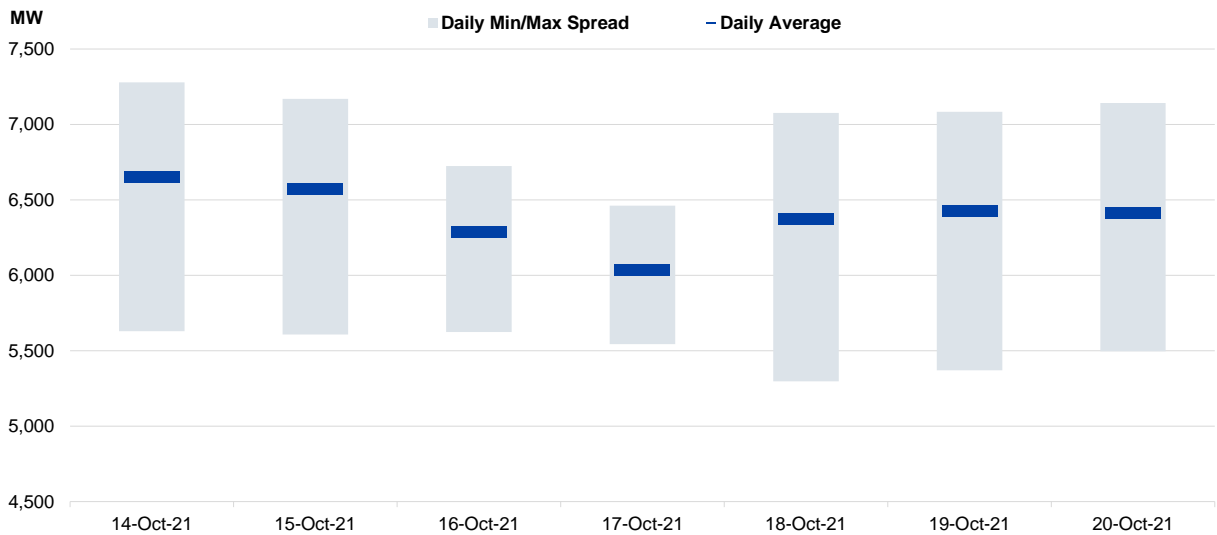
**Figure 4: Seven Days of Daily USEP vs Daily Forecasted Demand**



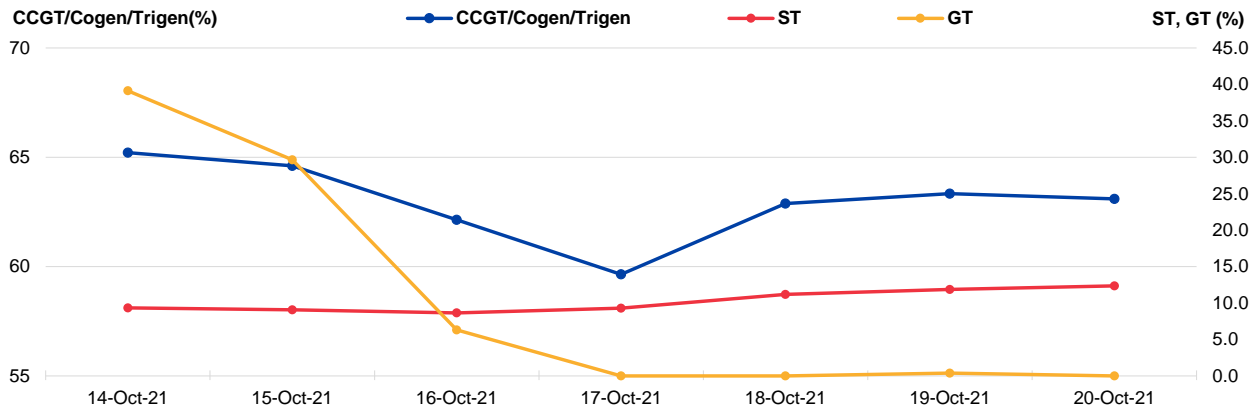
**Figure 5: Seven Days USEP Average-Max-Min**



**Figure 6: Seven Days Forecasted Demand Average-Max-Min**



**Figure 7: Daily Generation Plant Utilization Rate**



**Figure 8: Daily Trading Data Table**

	Thu 14-Oct-21	Fri 15-Oct-21	Sat 16-Oct-21	Sun 17-Oct-21	Mon 18-Oct-21	Tue 19-Oct-21	Wed 20-Oct-21
<b>Forecasted Demand (MW)</b>							
Daily Average	6,654	6,575	6,285	6,034	6,376	6,429	6,411
Daily Maximum	7,280	7,170	6,724	6,462	7,077	7,085	7,142
Daily Minimum	5,630	5,608	5,624	5,543	5,298	5,370	5,497
<b>Total Supply (MW)</b>							
Daily Average	8,109	8,329	8,039	8,052	8,324	8,308	8,331
Daily Maximum	8,343	8,446	8,066	8,233	8,456	8,478	8,597
Daily Minimum	7,941	8,066	7,931	7,932	7,940	7,955	8,065
<b>Energy Price (\$/MWh)</b>							
Daily Average	1821.60	889.19	1284.94	394.80	313.90	398.09	305.75
Daily Maximum	3811.16	1916.65	2018.96	1696.44	1694.23	2016.78	1523.13
Daily Minimum	267.82	145.57	273.71	113.52	79.91	109.30	94.38
<b>Reserve &amp; Regulation Prices (\$/MWh)</b>							
Primary	0.65	0.03	0.22	0.03	0.04	0.07	0.09
Contingency	83.00	2.94	4.89	0.42	1.43	6.48	3.28
Regulation	89.22	9.74	40.27	37.66	7.16	23.56	8.74
<b>Reserve &amp; Regulation Requirement (MW)</b>							
Primary	165	157	179	186	168	160	163
Contingency	607	605	607	606	604	589	599
Regulation	114	114	114	114	114	114	114
<b>Generation (MW)</b>							
CCGT/Cogen/Trigen	6,511	6,451	6,204	5,955	6,278	6,324	6,300
ST	108	105	100	107	129	137	143
GT	70	53	11	0	0	1	0

# Periodic Trading Data

Figure 9: Periodic Trading Data Table

Period	USEP (\$/MWh)	Forecasted Demand (MW)	CCGT/Cogen/Trigen Generation (MW)	ST Generation (MW)	GT Generation (MW)
1	\$210.04	5,872	5,778	122	0
2	\$201.56	5,766	5,672	122	0
3	\$183.78	5,699	5,604	122	0
4	\$163.33	5,628	5,532	122	0
5	\$158.00	5,586	5,489	122	0
6	\$148.11	5,547	5,450	122	0
7	\$148.11	5,525	5,428	122	0
8	\$148.09	5,497	5,399	122	0
9	\$153.16	5,502	5,405	122	0
10	\$157.97	5,526	5,428	122	0
11	\$201.27	5,616	5,519	122	0
12	\$323.27	5,786	5,691	122	0
13	\$686.29	5,960	5,866	122	0
14	\$795.26	6,121	6,018	132	0
15	\$234.53	6,290	6,189	132	0
16	\$574.53	6,518	6,419	132	0
17	\$1,522.29	6,739	6,642	132	0
18	\$323.95	6,832	6,736	132	0
19	\$323.95	6,908	6,813	132	0
20	\$241.95	6,971	6,877	132	0
21	\$423.32	7,045	6,952	132	0
22	\$648.62	7,116	7,018	137	0
23	\$1,523.13	7,142	7,045	137	0
24	\$1,521.76	7,062	6,965	137	0
25	\$221.21	6,954	6,855	137	0
26	\$168.77	6,942	6,842	137	0
27	\$227.62	6,990	6,891	137	0
28	\$201.67	6,997	6,898	137	0
29	\$201.66	6,968	6,868	137	0
30	\$176.32	6,941	6,841	137	0
31	\$172.29	6,920	6,820	137	0
32	\$148.42	6,901	6,784	154	0
33	\$137.19	6,876	6,738	174	0
34	\$137.19	6,864	6,727	174	0
35	\$122.60	6,794	6,634	195	0
36	\$114.68	6,693	6,532	195	0
37	\$113.93	6,627	6,426	234	0
38	\$114.79	6,661	6,558	137	0
39	\$128.88	6,700	6,599	137	0
40	\$143.15	6,705	6,604	137	0
41	\$137.19	6,649	6,548	137	0
42	\$143.15	6,592	6,490	137	0
43	\$234.70	6,508	6,405	137	0
44	\$171.93	6,352	6,248	137	0
45	\$137.10	6,197	6,064	163	0
46	\$110.02	6,045	5,881	193	0
47	\$100.86	5,906	5,727	207	0
48	\$94.38	5,679	5,497	207	0

**Disclaimer**

This Report is prepared and provided for general information purposes only. Information in this Report was obtained or derived from sources that the Energy Market Company Pte Ltd (EMC) considers reliable. All reasonable care has been taken to ensure that stated facts are accurate and opinions fair and reasonable at time of printing. EMC does not represent that information in this Report is accurate or complete and it should not be relied upon as such. In particular, in presentation of charts, certain assumptions were made which may not be stated therein. As such, EMC assumes no fiduciary responsibility or liability for any construction or interpretation you may take based on the information contained nor for any consequences, financial or otherwise, from transactions where information in this Report may be relied upon. You should make your own appraisal and should consult, to the extent necessary, your own professional advisors to ensure that any decision made based on the information in this Report is suitable for your circumstances. If you have any specific queries about this Report or its contents, you should contact us at [marketoperations-B@emcsq.com](mailto:marketoperations-B@emcsq.com).