

Daily Trading Report

19 October 2021

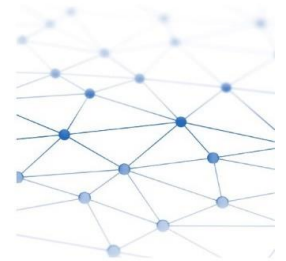
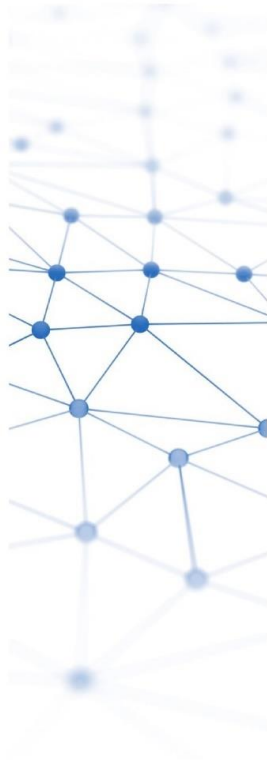


Figure 1: Forecasted Demand vs USEP

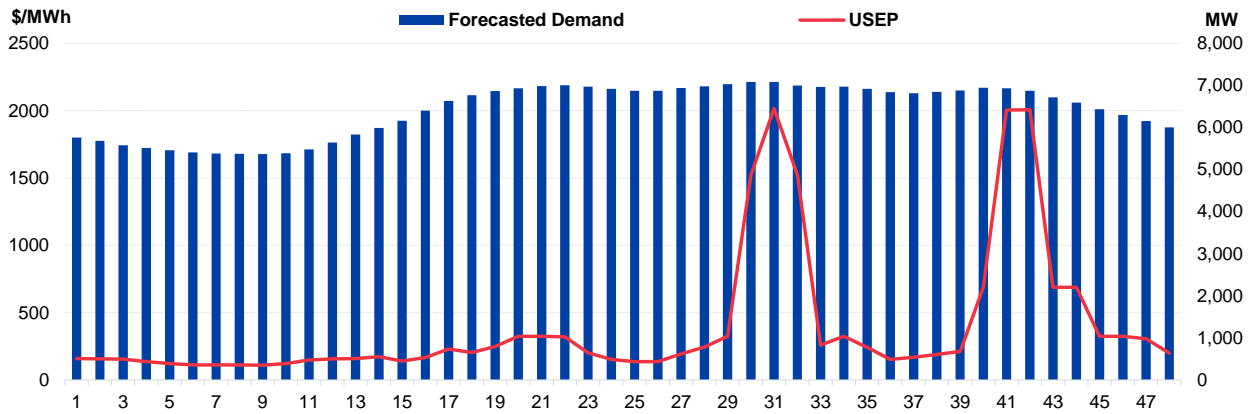


Figure 2: Periodic Ancillary Prices

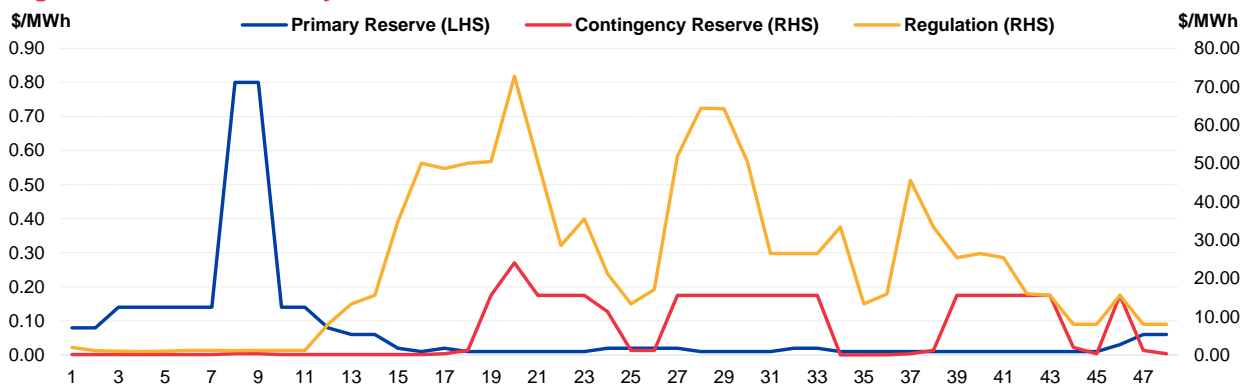


Figure 3: Daily Data Comparison

	Forecasted Demand (MW)	Total Supply (MW)	Energy Price (\$/MWh)
Weekday Ranking*	54 out of 4725	355 out of 4725	29 out of 4725
Daily Average	6,429	8,308	398.09
Previous day	6,376	8,324	313.90
Change (%)	0.8%	-0.2%	26.8%
Daily Max	7,085	8,478	2016.78
Previous day	7,077	8,456	1694.23
Change (%)	0.1%	0.3%	19.0%
Daily Min	5,370	7,955	109.30
Previous day	5,298	7,940	79.91
Change (%)	1.4%	0.2%	36.8%

	Primary Reserve Price (\$/MWh)	Contingency Reserve Price (\$/MWh)	Regulation Price (\$/MWh)
Daily Average	0.07	6.48	23.56
Previous day	0.04	1.43	7.16
Change (%)	75.0%	354.2%	228.9%
Daily Max	0.80	24.05	72.72
Previous day	0.14	15.55	25.55
Change (%)	471.4%	54.7%	184.6%
Daily Min	0.01	0.02	0.90
Previous day	0.01	0.01	1.20
Change (%)	0.0%	100.0%	-25.0%

*Ranking denotes the relative position of the market parameter since 1 Jan 2003.

Figure 4: Seven Days of Daily USEP vs Daily Forecasted Demand

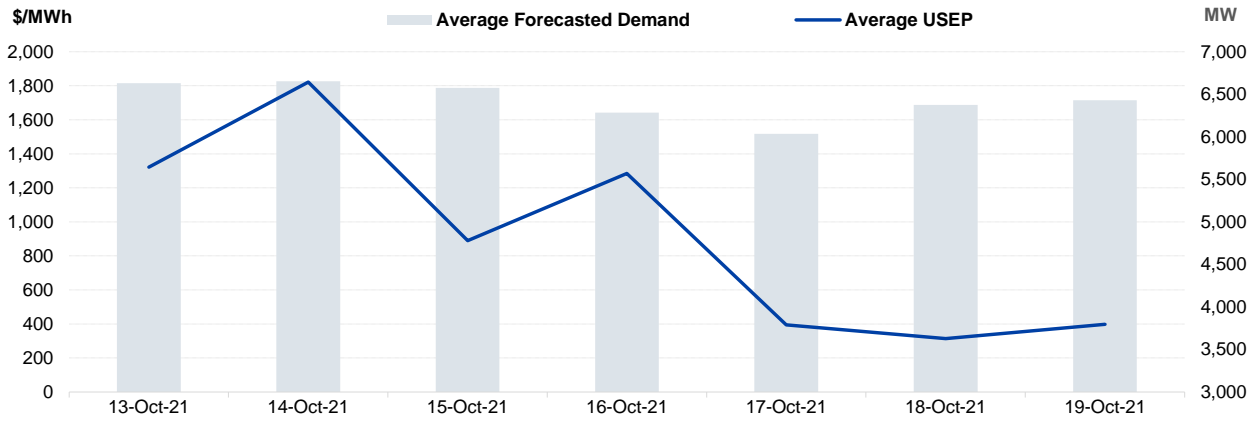


Figure 5: Seven Days USEP Average-Max-Min

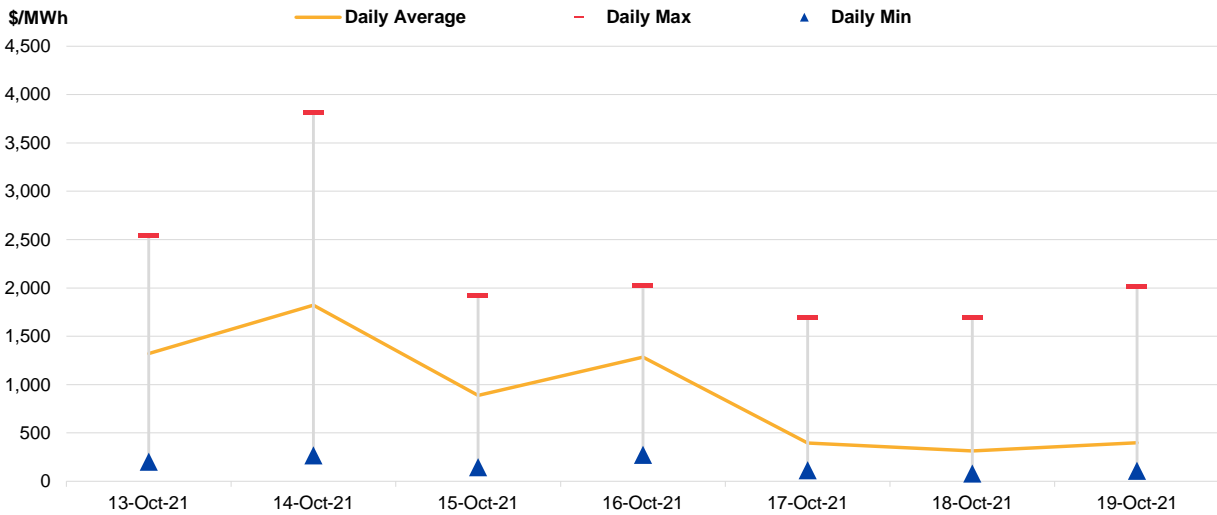


Figure 6: Seven Days Forecasted Demand Average-Max-Min

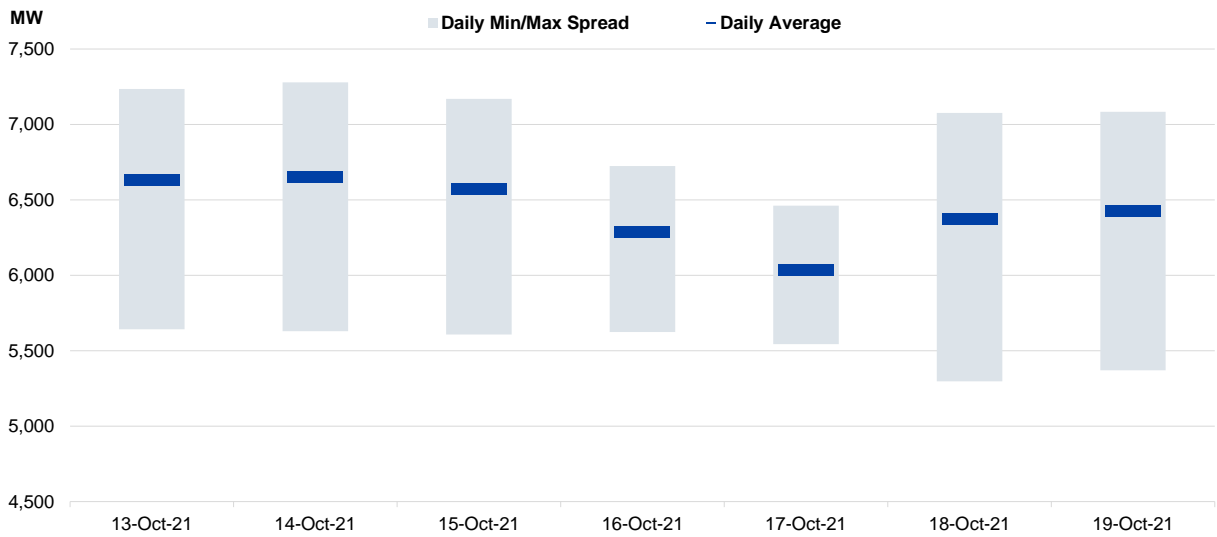


Figure 7: Daily Generation Plant Utilization Rate

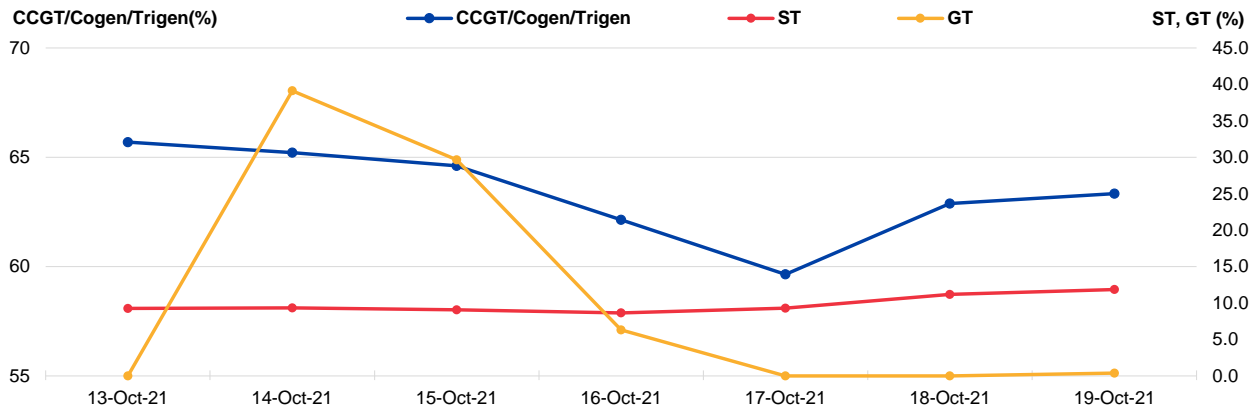


Figure 8: Daily Trading Data Table

	Wed 13-Oct-21	Thu 14-Oct-21	Fri 15-Oct-21	Sat 16-Oct-21	Sun 17-Oct-21	Mon 18-Oct-21	Tue 19-Oct-21
Forecasted Demand (MW)							
Daily Average	6,631	6,654	6,575	6,285	6,034	6,376	6,429
Daily Maximum	7,235	7,280	7,170	6,724	6,462	7,077	7,085
Daily Minimum	5,642	5,630	5,608	5,624	5,543	5,298	5,370
Total Supply (MW)							
Daily Average	8,233	8,109	8,329	8,039	8,052	8,324	8,308
Daily Maximum	8,401	8,343	8,446	8,066	8,233	8,456	8,478
Daily Minimum	7,830	7,941	8,066	7,931	7,932	7,940	7,955
Energy Price (\$/MWh)							
Daily Average	1321.89	1821.60	889.19	1284.94	394.80	313.90	398.09
Daily Maximum	2542.27	3811.16	1916.65	2018.96	1696.44	1694.23	2016.78
Daily Minimum	202.08	267.82	145.57	273.71	113.52	79.91	109.30
Reserve & Regulation Prices (\$/MWh)							
Primary	0.01	0.65	0.03	0.22	0.03	0.04	0.07
Contingency	3.99	83.00	2.94	4.89	0.42	1.43	6.48
Regulation	10.69	89.22	9.74	40.27	37.66	7.16	23.56
Reserve & Regulation Requirement (MW)							
Primary	157	165	157	179	186	168	160
Contingency	605	607	605	607	606	604	589
Regulation	114	114	114	114	114	114	114
Generation (MW)							
CCGT/Cogen/Trigen	6,559	6,511	6,451	6,204	5,955	6,278	6,324
ST	107	108	105	100	107	129	137
GT	0	70	53	11	0	0	1

Periodic Trading Data

Figure 9: Periodic Trading Data Table

Period	USEP (\$/MWh)	Forecasted Demand (MW)	CCGT/Cogen/Trigen Generation (MW)	ST Generation (MW)	GT Generation (MW)
1	\$158.17	5,764	5,665	126	0
2	\$156.20	5,681	5,581	126	0
3	\$153.41	5,576	5,475	126	0
4	\$135.90	5,512	5,410	126	0
5	\$120.69	5,459	5,356	126	0
6	\$111.09	5,410	5,308	126	0
7	\$110.87	5,383	5,280	126	0
8	\$111.76	5,376	5,273	126	0
9	\$109.30	5,370	5,267	126	0
10	\$120.68	5,387	5,283	126	0
11	\$148.06	5,482	5,380	126	0
12	\$155.74	5,645	5,545	126	0
13	\$158.00	5,832	5,732	126	0
14	\$173.41	5,990	5,892	126	0
15	\$139.24	6,164	6,067	126	0
16	\$167.11	6,400	6,306	126	0
17	\$229.57	6,633	6,540	126	0
18	\$203.59	6,772	6,681	126	0
19	\$249.32	6,869	6,780	126	0
20	\$323.96	6,936	6,847	126	0
21	\$324.04	6,982	6,868	152	0
22	\$320.61	7,003	6,859	182	0
23	\$201.66	6,973	6,815	196	0
24	\$153.37	6,923	6,763	196	0
25	\$137.02	6,875	6,715	196	0
26	\$137.00	6,871	6,711	196	0
27	\$192.52	6,941	6,782	196	0
28	\$244.23	6,982	6,823	196	0
29	\$324.03	7,034	6,876	196	0
30	\$1,523.05	7,084	6,927	196	0
31	\$2,016.78	7,085	6,963	129	32
32	\$1,523.07	7,000	6,925	114	0
33	\$259.01	6,962	6,896	104	0
34	\$324.05	6,975	6,902	111	0
35	\$241.94	6,919	6,834	122	0
36	\$153.35	6,844	6,758	122	0
37	\$168.74	6,813	6,728	122	0
38	\$189.06	6,848	6,763	122	0
39	\$211.36	6,880	6,796	122	0
40	\$687.64	6,947	6,864	122	0
41	\$2,005.00	6,934	6,851	122	0
42	\$2,007.45	6,875	6,791	122	0
43	\$687.64	6,720	6,635	122	0
44	\$687.58	6,594	6,507	122	0
45	\$323.46	6,434	6,346	122	0
46	\$323.43	6,297	6,208	122	0
47	\$305.64	6,153	6,062	122	0
48	\$199.67	6,006	5,913	122	0

Disclaimer

This Report is prepared and provided for general information purposes only. Information in this Report was obtained or derived from sources that the Energy Market Company Pte Ltd (EMC) considers reliable. All reasonable care has been taken to ensure that stated facts are accurate and opinions fair and reasonable at time of printing. EMC does not represent that information in this Report is accurate or complete and it should not be relied upon as such. In particular, in presentation of charts, certain assumptions were made which may not be stated therein. As such, EMC assumes no fiduciary responsibility or liability for any construction or interpretation you may take based on the information contained nor for any consequences, financial or otherwise, from transactions where information in this Report may be relied upon. You should make your own appraisal and should consult, to the extent necessary, your own professional advisors to ensure that any decision made based on the information in this Report is suitable for your circumstances. If you have any specific queries about this Report or its contents, you should contact us at marketoperations-B@emcsg.com.