

Daily Trading Report

18 October 2021

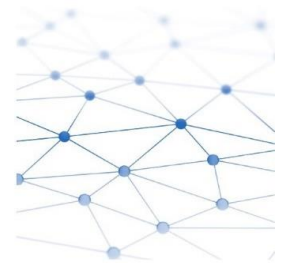
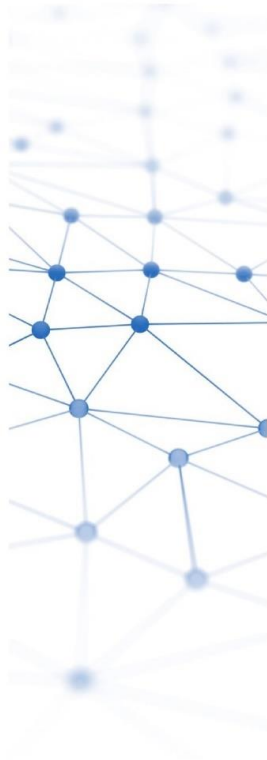


Figure 1: Forecasted Demand vs USEP

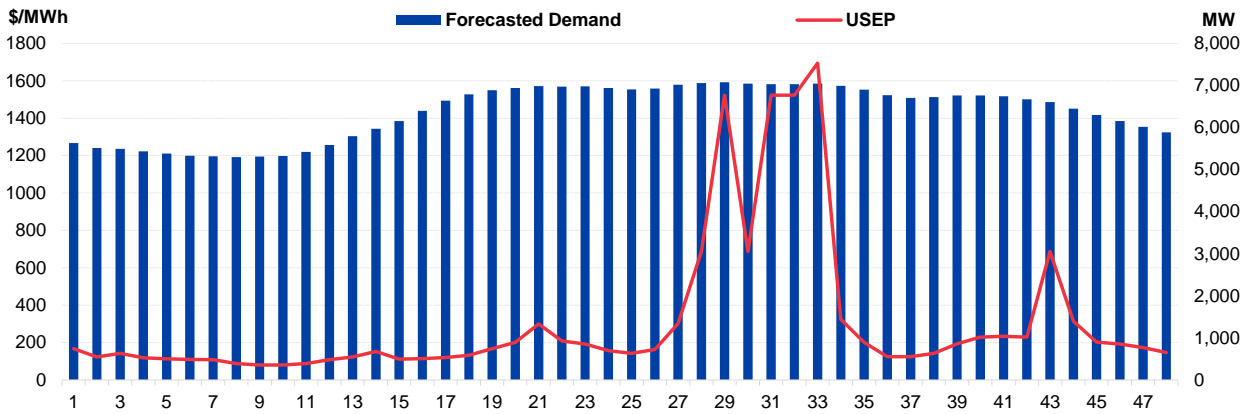


Figure 2: Periodic Ancillary Prices

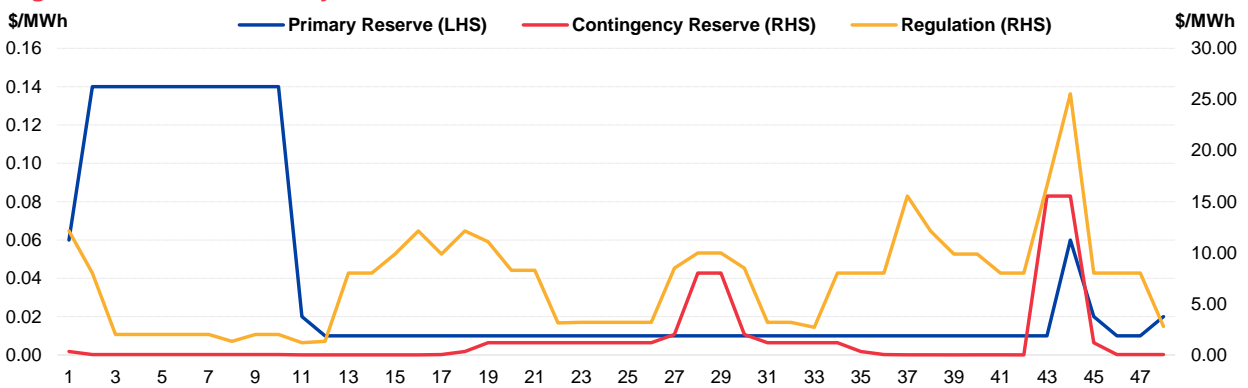


Figure 3: Daily Data Comparison

	Forecasted Demand (MW)	Total Supply (MW)	Energy Price (\$/MWh)
Weekday Ranking*	103 out of 4724	316 out of 4724	63 out of 4724
Daily Average	6,376	8,324	313.90
Previous day	6,034	8,052	394.80
Change (%)	5.7%	3.4%	-20.5%
Daily Max	7,077	8,456	1694.23
Previous day	6,462	8,233	1696.44
Change (%)	9.5%	2.7%	-0.1%
Daily Min	5,298	7,940	79.91
Previous day	5,543	7,932	113.52
Change (%)	-4.4%	0.1%	-29.6%

	Primary Reserve Price (\$/MWh)	Contingency Reserve Price (\$/MWh)	Regulation Price (\$/MWh)
Daily Average	0.04	1.43	7.16
Previous day	0.03	0.42	37.66
Change (%)	33.3%	237.2%	-81.0%
Daily Max	0.14	15.55	25.55
Previous day	0.14	15.55	155.27
Change (%)	0.0%	0.0%	-83.5%
Daily Min	0.01	0.01	1.20
Previous day	0.01	0.01	2.00
Change (%)	0.0%	0.0%	-40.0%

*Ranking denotes the relative position of the market parameter since 1 Jan 2003.

Figure 4: Seven Days of Daily USEP vs Daily Forecasted Demand

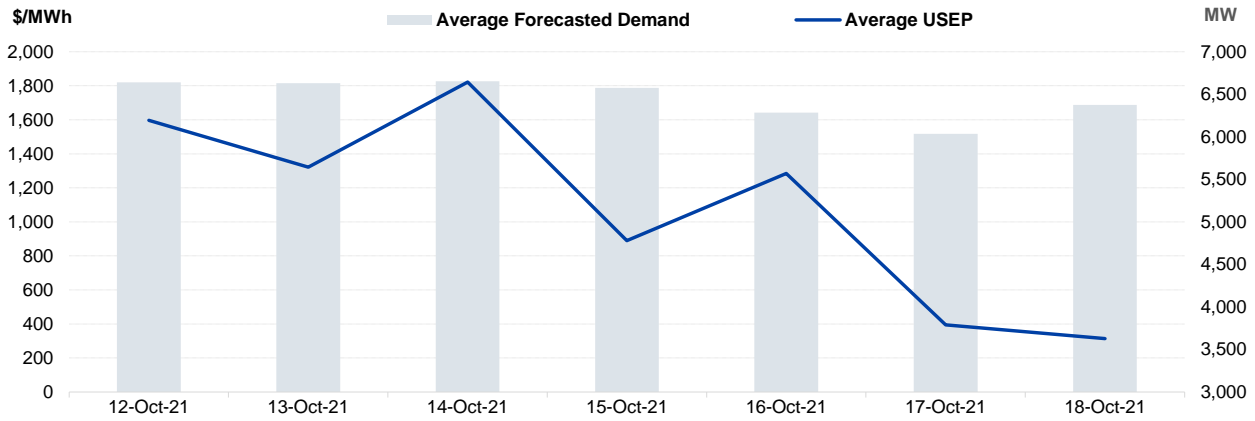


Figure 5: Seven Days USEP Average-Max-Min

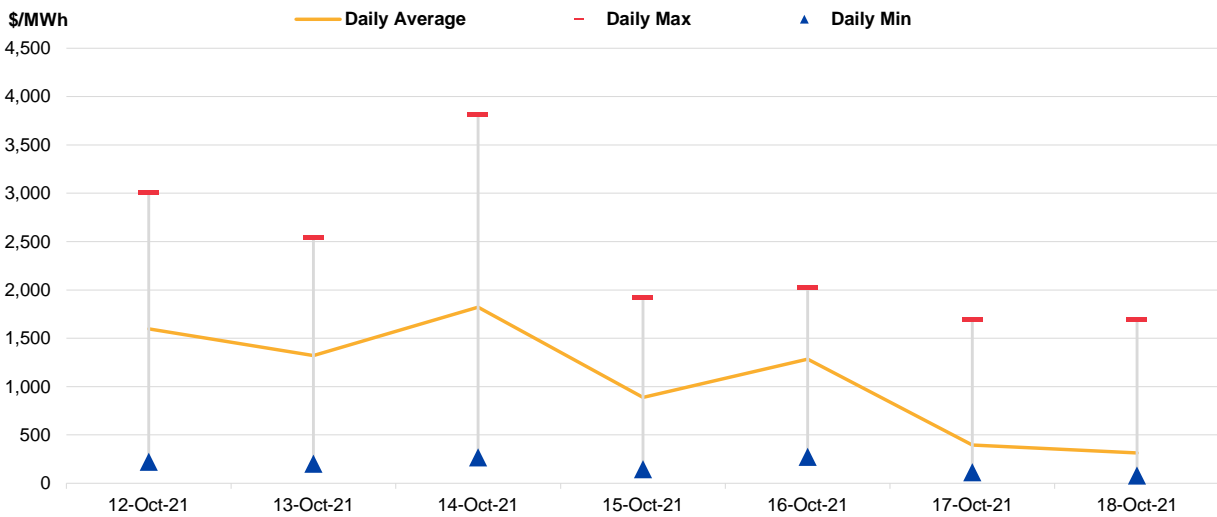


Figure 6: Seven Days Forecasted Demand Average-Max-Min

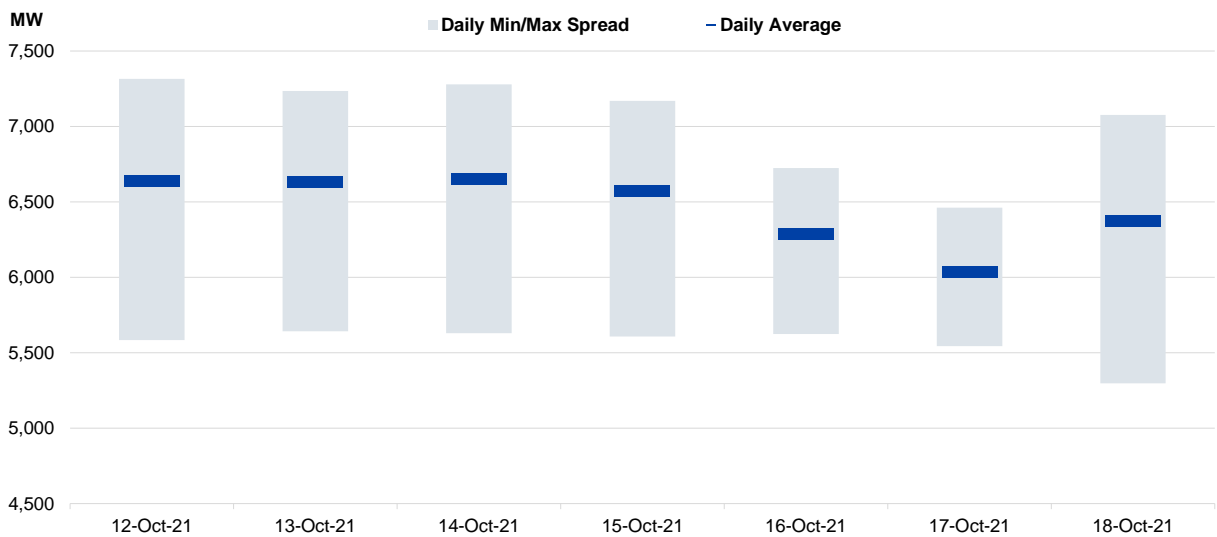


Figure 7: Daily Generation Plant Utilization Rate

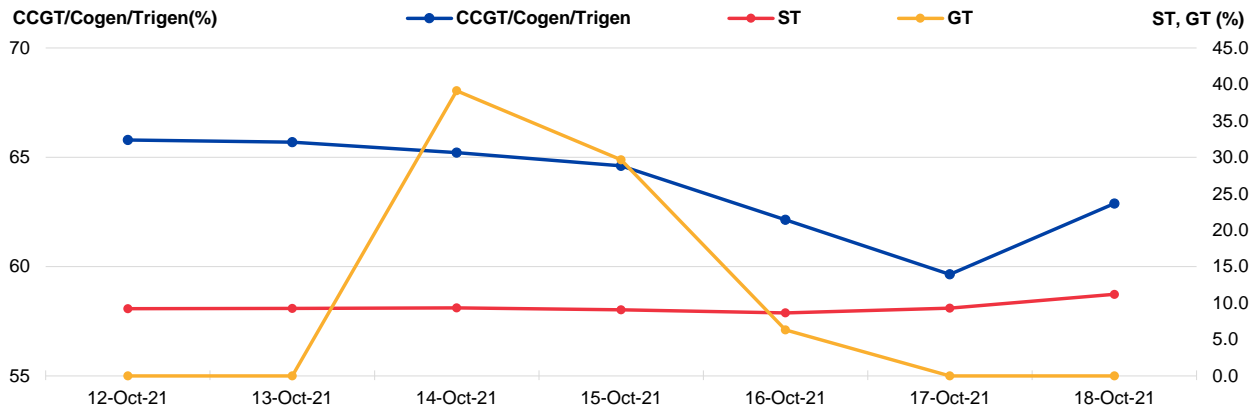


Figure 8: Daily Trading Data Table

	Tue 12-Oct-21	Wed 13-Oct-21	Thu 14-Oct-21	Fri 15-Oct-21	Sat 16-Oct-21	Sun 17-Oct-21	Mon 18-Oct-21
Forecasted Demand (MW)							
Daily Average	6,640	6,631	6,654	6,575	6,285	6,034	6,376
Daily Maximum	7,315	7,235	7,280	7,170	6,724	6,462	7,077
Daily Minimum	5,584	5,642	5,630	5,608	5,624	5,543	5,298
Total Supply (MW)							
Daily Average	8,188	8,233	8,109	8,329	8,039	8,052	8,324
Daily Maximum	8,389	8,401	8,343	8,446	8,066	8,233	8,456
Daily Minimum	7,956	7,830	7,941	8,066	7,931	7,932	7,940
Energy Price (\$/MWh)							
Daily Average	1597.26	1321.89	1821.60	889.19	1284.94	394.80	313.90
Daily Maximum	3008.25	2542.27	3811.16	1916.65	2018.96	1696.44	1694.23
Daily Minimum	222.53	202.08	267.82	145.57	273.71	113.52	79.91
Reserve & Regulation Prices (\$/MWh)							
Primary	0.04	0.01	0.65	0.03	0.22	0.03	0.04
Contingency	20.91	3.99	83.00	2.94	4.89	0.42	1.43
Regulation	27.33	10.69	89.22	9.74	40.27	37.66	7.16
Reserve & Regulation Requirement (MW)							
Primary	160	157	165	157	179	186	168
Contingency	606	605	607	605	607	606	604
Regulation	114	114	114	114	114	114	114
Generation (MW)							
CCGT/Cogen/Trigen	6,568	6,559	6,511	6,451	6,204	5,955	6,278
ST	106	107	108	105	100	107	129
GT	0	0	70	53	11	0	0

Periodic Trading Data

Figure 9: Periodic Trading Data Table

Period	USEP (\$/MWh)	Forecasted Demand (MW)	CCGT/Cogen/Trigen Generation (MW)	ST Generation (MW)	GT Generation (MW)
1	\$167.44	5,630	5,530	126	0
2	\$123.33	5,515	5,414	126	0
3	\$141.78	5,492	5,390	126	0
4	\$118.77	5,432	5,329	126	0
5	\$112.76	5,379	5,276	126	0
6	\$109.58	5,328	5,224	126	0
7	\$108.81	5,317	5,213	126	0
8	\$88.09	5,298	5,194	126	0
9	\$79.91	5,312	5,209	126	0
10	\$79.91	5,321	5,217	126	0
11	\$87.77	5,421	5,318	126	0
12	\$108.79	5,582	5,481	126	0
13	\$122.99	5,792	5,692	126	0
14	\$152.24	5,971	5,873	126	0
15	\$110.99	6,157	6,061	126	0
16	\$114.62	6,395	6,301	126	0
17	\$120.23	6,637	6,554	116	0
18	\$131.71	6,786	6,705	116	0
19	\$167.76	6,886	6,801	121	0
20	\$201.66	6,937	6,848	126	0
21	\$299.74	6,982	6,889	131	0
22	\$208.13	6,971	6,873	136	0
23	\$191.97	6,976	6,873	141	0
24	\$157.44	6,937	6,828	146	0
25	\$142.23	6,910	6,796	151	0
26	\$162.73	6,925	6,812	151	0
27	\$300.64	7,015	6,902	151	0
28	\$687.37	7,055	6,943	151	0
29	\$1,522.96	7,077	6,970	146	0
30	\$687.49	7,043	6,940	141	0
31	\$1,522.95	7,029	6,931	136	0
32	\$1,522.91	7,029	6,937	131	0
33	\$1,694.23	7,044	6,957	126	0
34	\$323.99	6,989	6,896	131	0
35	\$201.65	6,902	6,813	126	0
36	\$124.20	6,769	6,679	126	0
37	\$124.19	6,707	6,616	126	0
38	\$142.18	6,725	6,635	126	0
39	\$194.02	6,763	6,674	126	0
40	\$228.72	6,765	6,675	126	0
41	\$233.80	6,743	6,654	126	0
42	\$228.68	6,671	6,580	126	0
43	\$687.45	6,606	6,516	126	0
44	\$314.13	6,451	6,358	126	0
45	\$203.09	6,298	6,204	126	0
46	\$191.73	6,152	6,056	126	0
47	\$172.45	6,019	5,922	126	0
48	\$147.20	5,888	5,790	126	0

Disclaimer

This Report is prepared and provided for general information purposes only. Information in this Report was obtained or derived from sources that the Energy Market Company Pte Ltd (EMC) considers reliable. All reasonable care has been taken to ensure that stated facts are accurate and opinions fair and reasonable at time of printing. EMC does not represent that information in this Report is accurate or complete and it should not be relied upon as such. In particular, in presentation of charts, certain assumptions were made which may not be stated therein. As such, EMC assumes no fiduciary responsibility or liability for any construction or interpretation you may take based on the information contained nor for any consequences, financial or otherwise, from transactions where information in this Report may be relied upon. You should make your own appraisal and should consult, to the extent necessary, your own professional advisors to ensure that any decision made based on the information in this Report is suitable for your circumstances. If you have any specific queries about this Report or its contents, you should contact us at marketoperations-B@emcsg.com.