

Daily Trading Report

16 October 2021

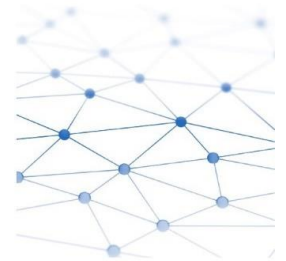
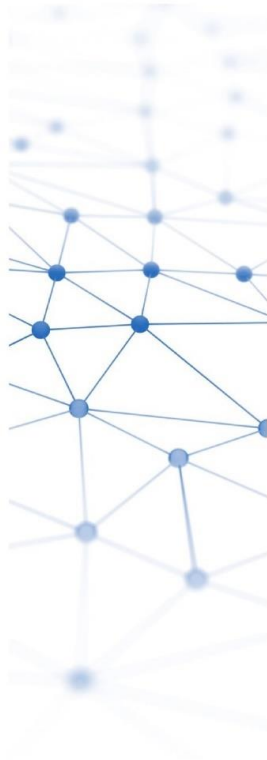


Figure 1: Forecasted Demand vs USEP

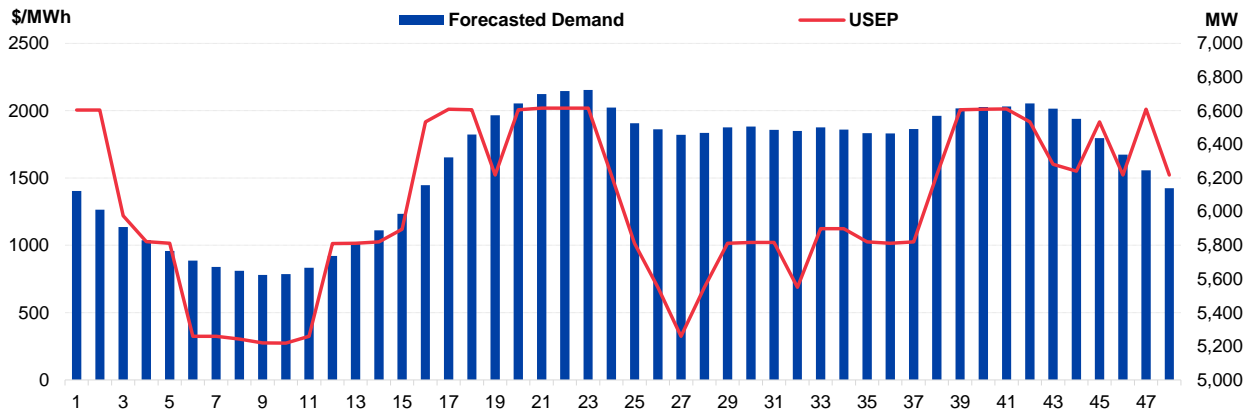


Figure 2: Periodic Ancillary Prices

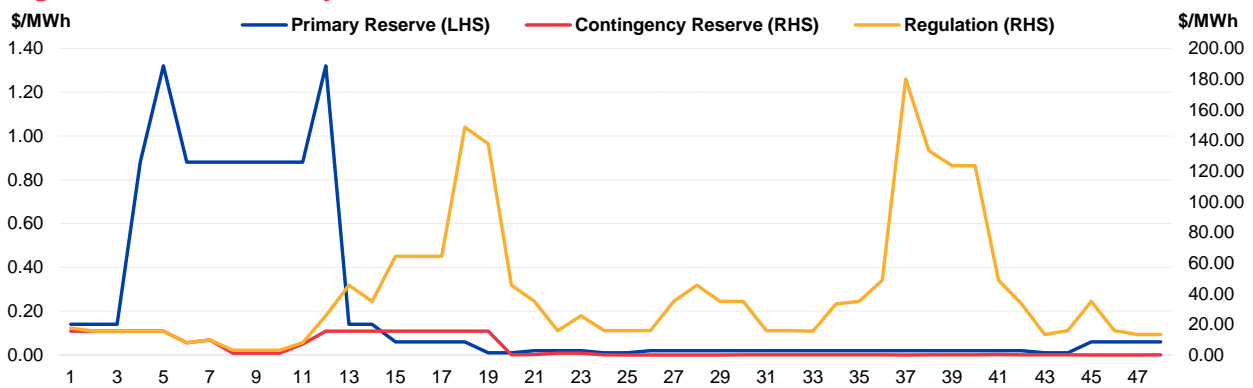


Figure 3: Daily Data Comparison

	Forecasted Demand (MW)	Total Supply (MW)	Energy Price (\$/MWh)
Saturday Ranking*	1 out of 955	47 out of 955	1 out of 955
Daily Average	6,285	8,039	1284.94
Previous day	6,575	8,329	889.19
Change (%)	-4.4%	-3.5%	44.5%
Daily Max	6,724	8,066	2018.96
Previous day	7,170	8,446	1916.65
Change (%)	-6.2%	-4.5%	5.3%
Daily Min	5,624	7,931	273.71
Previous day	5,608	8,066	145.57
Change (%)	0.3%	-1.7%	88.0%

	Primary Reserve Price (\$/MWh)	Contingency Reserve Price (\$/MWh)	Regulation Price (\$/MWh)
Daily Average	0.22	4.89	40.27
Previous day	0.03	2.94	9.74
Change (%)	633.3%	66.2%	313.4%
Daily Max	1.32	15.55	179.99
Previous day	0.14	19.99	48.68
Change (%)	842.9%	-22.2%	269.7%
Daily Min	0.01	0.01	3.10
Previous day	0.01	0.05	1.00
Change (%)	0.0%	-80.0%	210.0%

*Ranking denotes the relative position of the market parameter since 1 Jan 2003.

Figure 4: Seven Days of Daily USEP vs Daily Forecasted Demand

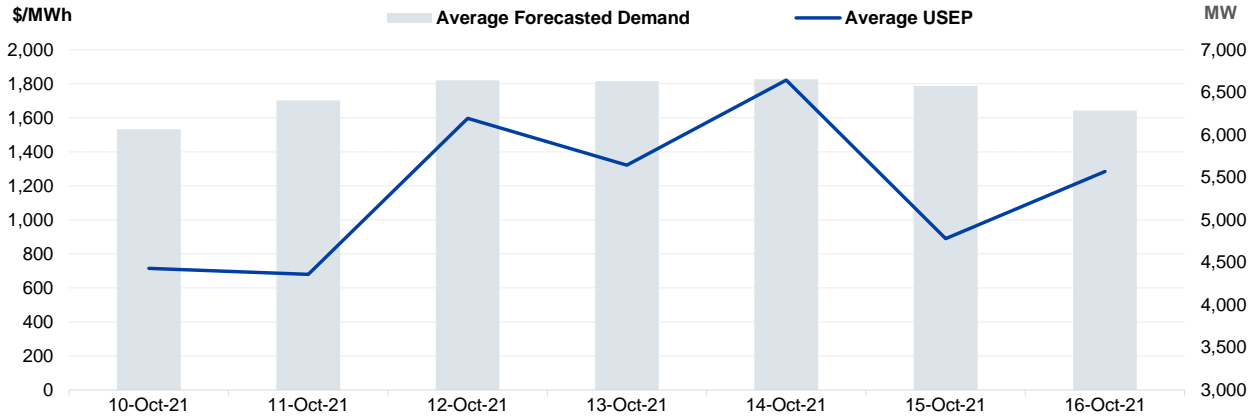


Figure 5: Seven Days USEP Average-Max-Min

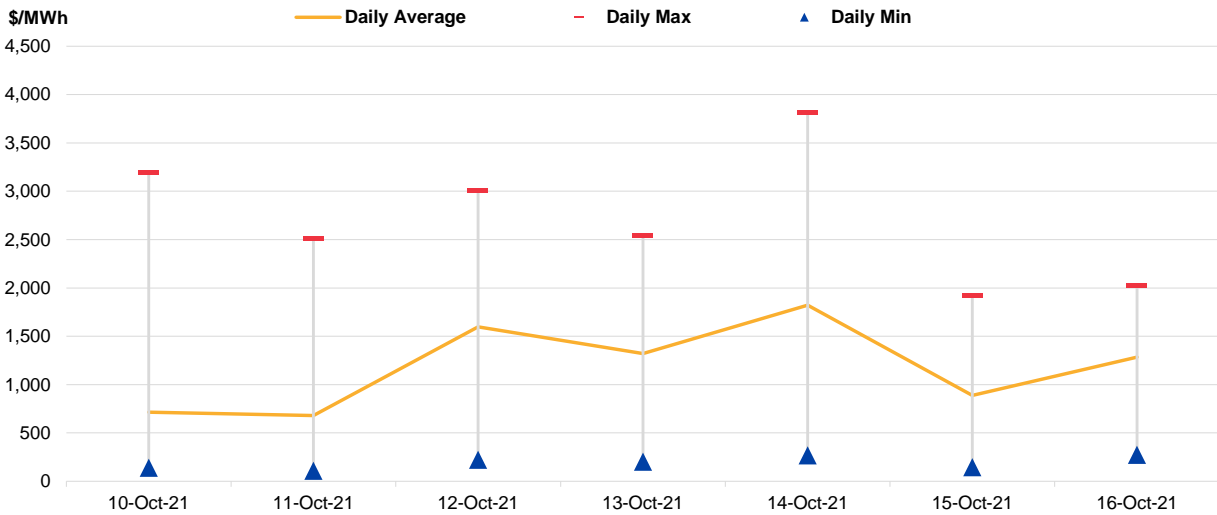


Figure 6: Seven Days Forecasted Demand Average-Max-Min

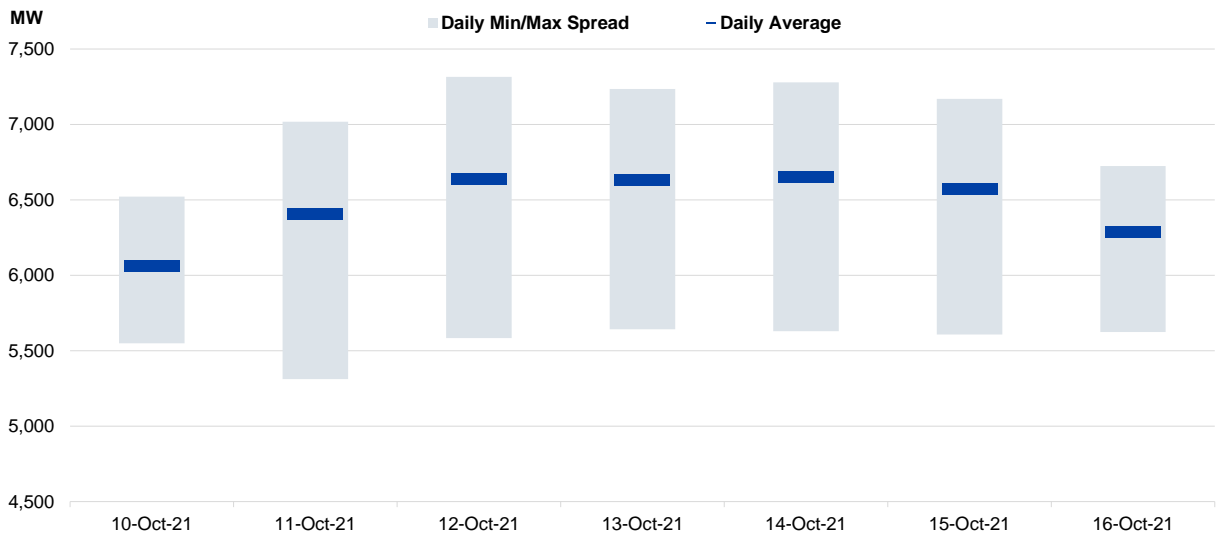


Figure 7: Daily Generation Plant Utilization Rate

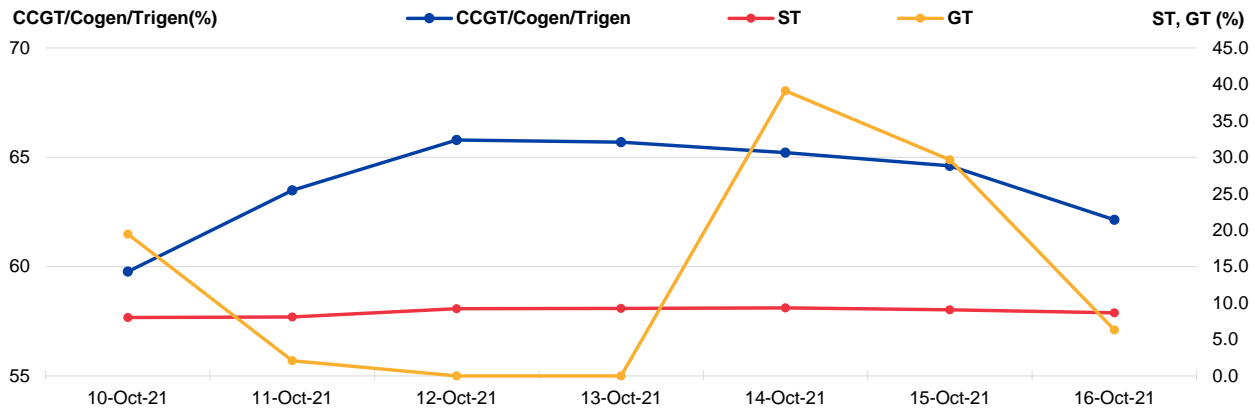


Figure 8: Daily Trading Data Table

	Sun 10-Oct-21	Mon 11-Oct-21	Tue 12-Oct-21	Wed 13-Oct-21	Thu 14-Oct-21	Fri 15-Oct-21	Sat 16-Oct-21
Forecasted Demand (MW)							
Daily Average	6,065	6,403	6,640	6,631	6,654	6,575	6,285
Daily Maximum	6,522	7,018	7,315	7,235	7,280	7,170	6,724
Daily Minimum	5,549	5,312	5,584	5,642	5,630	5,608	5,624
Total Supply (MW)							
Daily Average	7,534	8,198	8,188	8,233	8,109	8,329	8,039
Daily Maximum	7,998	8,376	8,389	8,401	8,343	8,446	8,066
Daily Minimum	7,054	7,810	7,956	7,830	7,941	8,066	7,931
Energy Price (\$/MWh)							
Daily Average	715.79	679.81	1597.26	1321.89	1821.60	889.19	1284.94
Daily Maximum	3193.68	2509.35	3008.25	2542.27	3811.16	1916.65	2018.96
Daily Minimum	140.63	109.46	222.53	202.08	267.82	145.57	273.71
Reserve & Regulation Prices (\$/MWh)							
Primary	5.39	0.39	0.04	0.01	0.65	0.03	0.22
Contingency	36.47	3.02	20.91	3.99	83.00	2.94	4.89
Regulation	88.36	8.30	27.33	10.69	89.22	9.74	40.27
Reserve & Regulation Requirement (MW)							
Primary	187	163	160	157	165	157	179
Contingency	617	599	606	605	607	605	607
Regulation	114	114	114	114	114	114	114
Generation (MW)							
CCGT/Cogen/Trigen	5,967	6,339	6,568	6,559	6,511	6,451	6,204
ST	92	93	106	107	108	105	100
GT	35	4	0	0	70	53	11

Periodic Trading Data

Figure 9: Periodic Trading Data Table

Period	USEP (\$/MWh)	Forecasted Demand (MW)	CCGT/Cogen/Trigen Generation (MW)	ST Generation (MW)	GT Generation (MW)
1	\$2,004.96	6,124	5,987	107	60
2	\$2,004.63	6,012	5,935	107	0
3	\$1,220.24	5,909	5,830	107	0
4	\$1,028.39	5,831	5,752	107	0
5	\$1,014.57	5,766	5,686	107	0
6	\$323.45	5,709	5,629	107	0
7	\$323.37	5,672	5,592	107	0
8	\$304.53	5,648	5,567	107	0
9	\$275.32	5,624	5,543	107	0
10	\$273.71	5,629	5,548	107	0
11	\$323.23	5,667	5,596	97	0
12	\$1,013.60	5,737	5,666	97	0
13	\$1,014.54	5,816	5,746	97	0
14	\$1,025.27	5,889	5,820	97	0
15	\$1,119.75	5,987	5,918	97	0
16	\$1,916.16	6,157	6,040	97	49
17	\$2,010.58	6,323	6,257	97	0
18	\$2,006.60	6,458	6,392	97	0
19	\$1,522.99	6,573	6,469	97	40
20	\$2,006.62	6,643	6,520	97	60
21	\$2,018.26	6,699	6,576	97	60
22	\$2,018.96	6,717	6,594	97	60
23	\$2,018.96	6,724	6,601	97	60
24	\$1,521.63	6,618	6,515	97	40
25	\$1,014.89	6,526	6,461	97	0
26	\$687.17	6,490	6,425	97	0
27	\$323.77	6,457	6,392	97	0
28	\$687.15	6,468	6,404	97	0
29	\$1,014.94	6,501	6,437	97	0
30	\$1,022.24	6,505	6,441	97	0
31	\$1,022.27	6,486	6,422	97	0
32	\$687.18	6,479	6,415	97	0
33	\$1,122.76	6,501	6,435	99	0
34	\$1,122.90	6,488	6,422	99	0
35	\$1,024.99	6,467	6,400	99	0
36	\$1,014.98	6,465	6,398	99	0
37	\$1,025.03	6,492	6,423	101	0
38	\$1,521.84	6,569	6,501	101	0
39	\$2,007.19	6,614	6,547	101	0
40	\$2,011.86	6,623	6,556	101	0
41	\$2,012.36	6,626	6,559	101	0
42	\$1,917.08	6,644	6,533	101	44
43	\$1,601.72	6,612	6,516	101	30
44	\$1,551.70	6,551	6,484	101	0
45	\$1,916.93	6,437	6,327	101	42
46	\$1,523.05	6,339	6,270	101	0
47	\$2,010.78	6,245	6,175	101	0
48	\$1,522.04	6,140	6,070	101	0

Disclaimer

This Report is prepared and provided for general information purposes only. Information in this Report was obtained or derived from sources that the Energy Market Company Pte Ltd (EMC) considers reliable. All reasonable care has been taken to ensure that stated facts are accurate and opinions fair and reasonable at time of printing. EMC does not represent that information in this Report is accurate or complete and it should not be relied upon as such. In particular, in presentation of charts, certain assumptions were made which may not be stated therein. As such, EMC assumes no fiduciary responsibility or liability for any construction or interpretation you may take based on the information contained nor for any consequences, financial or otherwise, from transactions where information in this Report may be relied upon. You should make your own appraisal and should consult, to the extent necessary, your own professional advisors to ensure that any decision made based on the information in this Report is suitable for your circumstances. If you have any specific queries about this Report or its contents, you should contact us at marketoperations-B@emcsg.com.