

Daily Trading Report

13 October 2021

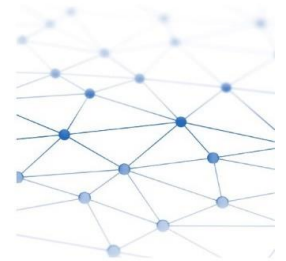
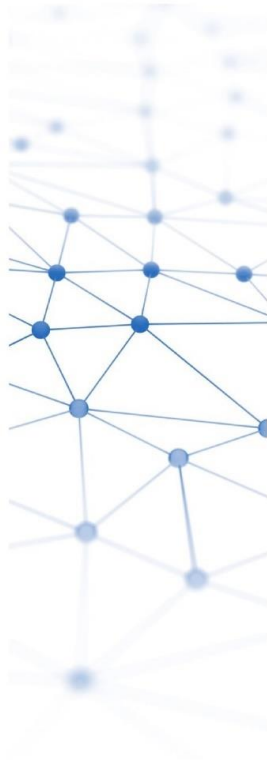


Figure 1: Forecasted Demand vs USEP

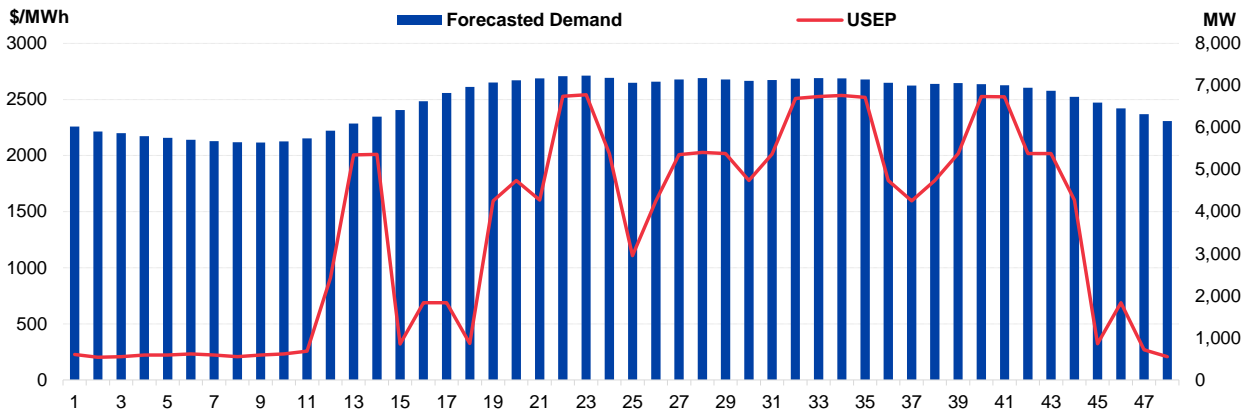


Figure 2: Periodic Ancillary Prices

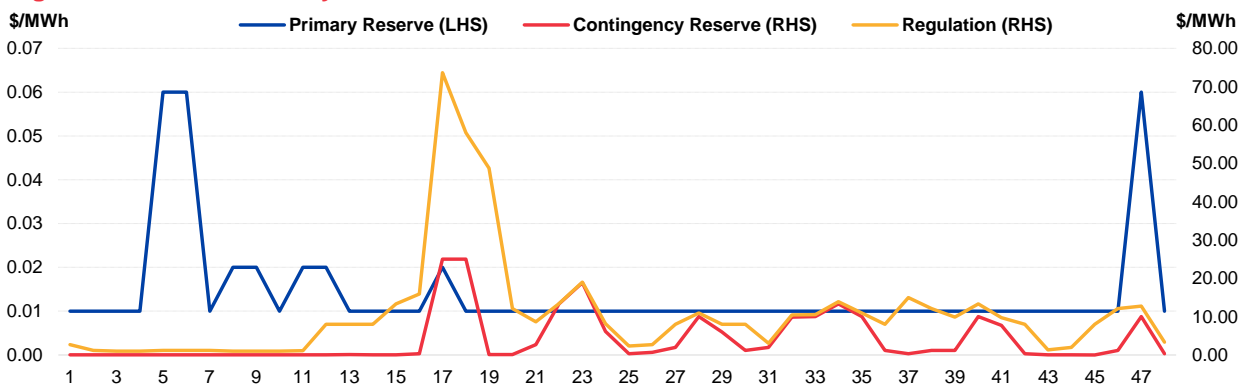


Figure 3: Daily Data Comparison

	Forecasted Demand (MW)	Total Supply (MW)	Energy Price (\$/MWh)
Weekday Ranking*	2 out of 4721	534 out of 4721	2 out of 4721
Daily Average	6,631	8,233	1321.89
Previous day	6,640	8,188	1597.26
Change (%)	-0.1%	0.5%	-17.2%
Daily Max	7,235	8,401	2542.27
Previous day	7,315	8,389	3008.25
Change (%)	-1.1%	0.1%	-15.5%
Daily Min	5,642	7,830	202.08
Previous day	5,584	7,956	222.53
Change (%)	1.0%	-1.6%	-9.2%

	Primary Reserve Price (\$/MWh)	Contingency Reserve Price (\$/MWh)	Regulation Price (\$/MWh)
Daily Average	0.01	3.99	10.69
Previous day	0.04	20.91	27.33
Change (%)	-75.0%	-80.9%	-60.9%
Daily Max	0.06	25.00	73.64
Previous day	0.16	184.84	184.88
Change (%)	-62.5%	-86.5%	-60.2%
Daily Min	0.01	0.01	1.00
Previous day	0.01	0.01	1.00
Change (%)	0.0%	0.0%	0.0%

*Ranking denotes the relative position of the market parameter since 1 Jan 2003.

Figure 4: Seven Days of Daily USEP vs Daily Forecasted Demand

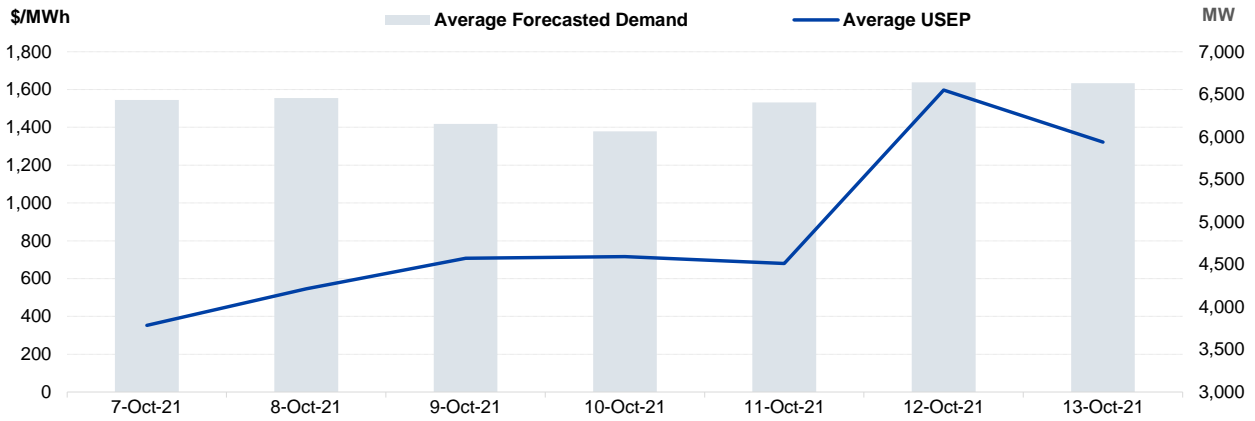


Figure 5: Seven Days USEP Average-Max-Min

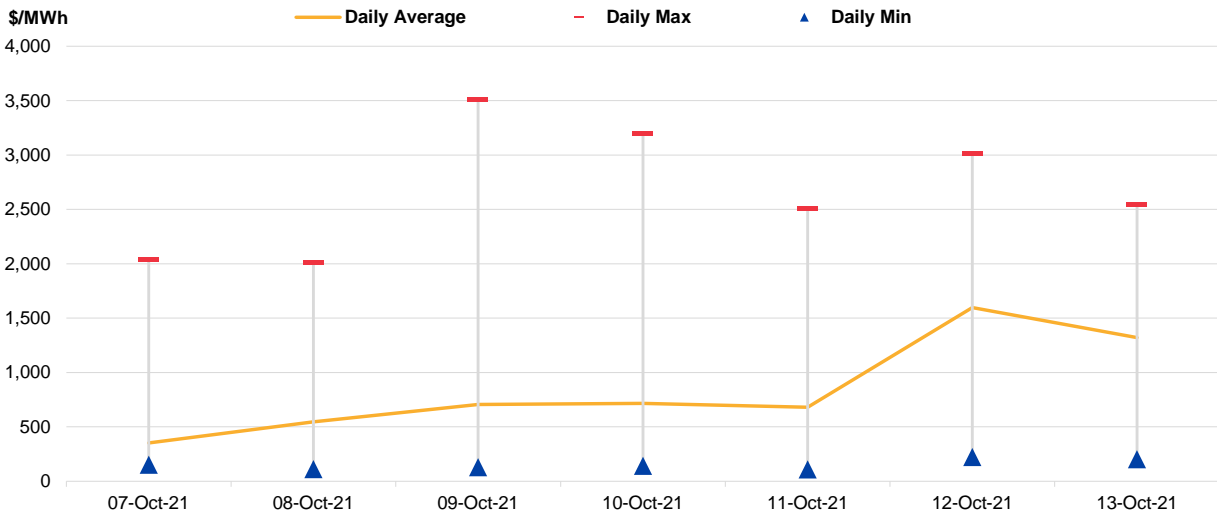


Figure 6: Seven Days Forecasted Demand Average-Max-Min

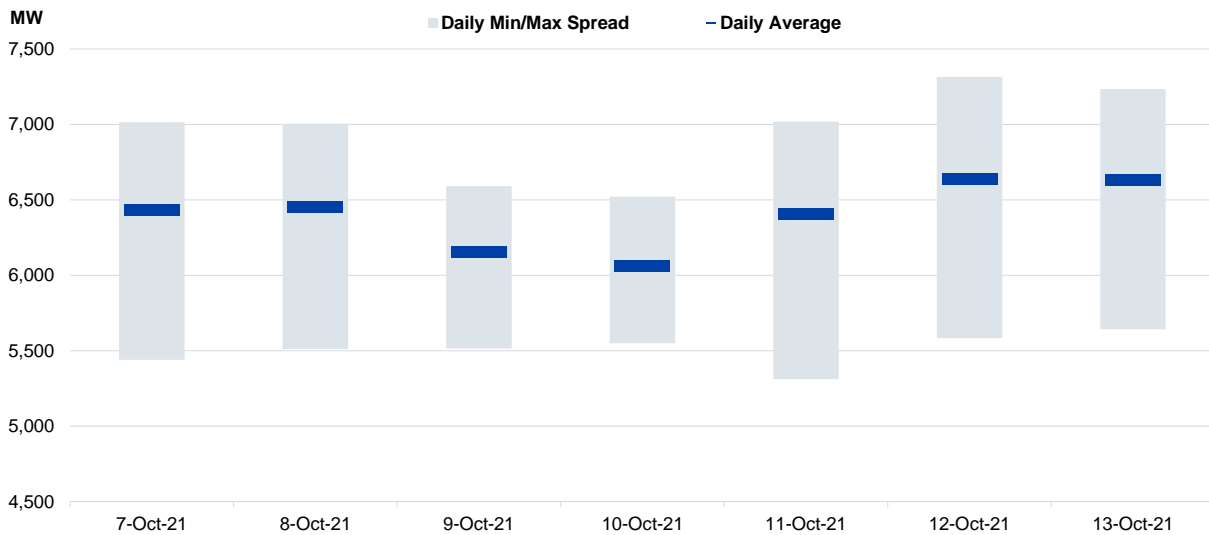


Figure 7: Daily Generation Plant Utilization Rate

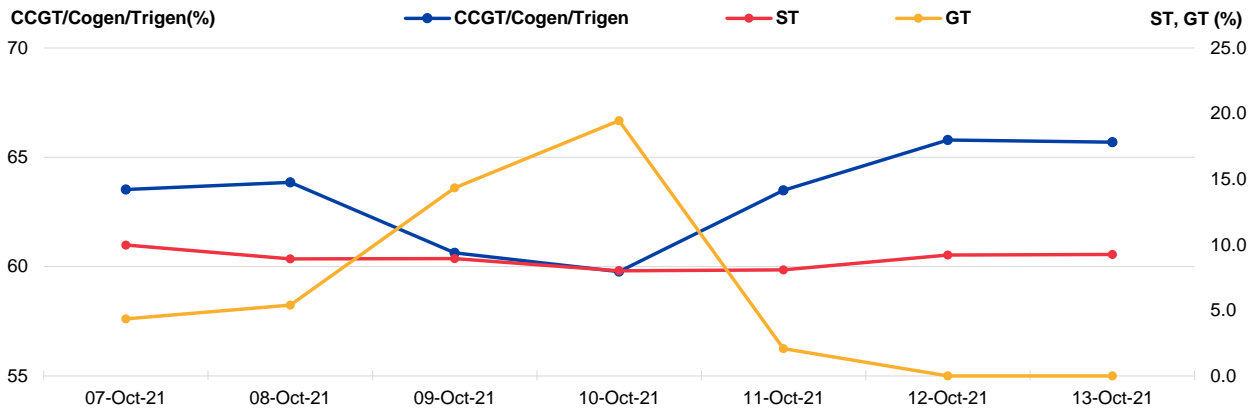


Figure 8: Daily Trading Data Table

	Thu 07-Oct-21	Fri 08-Oct-21	Sat 09-Oct-21	Sun 10-Oct-21	Mon 11-Oct-21	Tue 12-Oct-21	Wed 13-Oct-21
Forecasted Demand (MW)							
Daily Average	6,433	6,455	6,151	6,065	6,403	6,640	6,631
Daily Maximum	7,015	7,005	6,590	6,522	7,018	7,315	7,235
Daily Minimum	5,440	5,512	5,515	5,549	5,312	5,584	5,642
Total Supply (MW)							
Daily Average	8,253	8,234	7,550	7,534	8,198	8,188	8,233
Daily Maximum	8,506	8,485	7,845	7,998	8,376	8,389	8,401
Daily Minimum	7,762	7,838	7,204	7,054	7,810	7,956	7,830
Energy Price (\$/MWh)							
Daily Average	352.55	546.06	707.31	715.79	679.81	1597.26	1321.89
Daily Maximum	2039.38	2007.23	3506.72	3193.68	2509.35	3008.25	2542.27
Daily Minimum	151.11	110.61	129.46	140.63	109.46	222.53	202.08
Reserve & Regulation Prices (\$/MWh)							
Primary	0.04	0.23	8.68	5.39	0.39	0.04	0.01
Contingency	1.56	3.84	42.55	36.47	3.02	20.91	3.99
Regulation	9.46	9.09	77.33	88.36	8.30	27.33	10.69
Reserve & Regulation Requirement (MW)							
Primary	162	161	196	187	163	160	157
Contingency	601	601	624	617	599	606	605
Regulation	114	114	114	114	114	114	114
Generation (MW)							
CCGT/Cogen/Trigen	6,343	6,375	6,053	5,967	6,339	6,568	6,559
ST	115	103	103	92	93	106	107
GT	8	10	26	35	4	0	0

Periodic Trading Data

Figure 9: Periodic Trading Data Table

Period	USEP (\$/MWh)	Forecasted Demand (MW)	CCGT/Cogen/Trigen Generation (MW)	ST Generation (MW)	GT Generation (MW)
1	\$227.75	6,020	5,952	99	0
2	\$202.08	5,907	5,838	99	0
3	\$206.62	5,869	5,799	99	0
4	\$222.35	5,795	5,723	99	0
5	\$222.35	5,757	5,686	99	0
6	\$232.36	5,709	5,636	99	0
7	\$222.34	5,677	5,604	99	0
8	\$206.80	5,647	5,574	99	0
9	\$222.31	5,642	5,568	99	0
10	\$232.39	5,669	5,596	99	0
11	\$256.88	5,741	5,668	99	0
12	\$909.77	5,923	5,852	99	0
13	\$2,004.91	6,094	6,024	99	0
14	\$2,010.14	6,260	6,191	99	0
15	\$319.09	6,413	6,347	99	0
16	\$687.36	6,624	6,560	99	0
17	\$687.54	6,823	6,760	99	0
18	\$323.97	6,964	6,893	109	0
19	\$1,596.97	7,071	6,996	114	0
20	\$1,777.84	7,124	7,044	119	0
21	\$1,604.65	7,170	7,086	124	0
22	\$2,528.84	7,218	7,133	124	0
23	\$2,542.27	7,235	7,146	129	0
24	\$2,018.78	7,180	7,086	134	0
25	\$1,107.36	7,067	6,971	134	0
26	\$1,597.03	7,088	6,993	134	0
27	\$2,007.65	7,142	7,047	134	0
28	\$2,027.56	7,176	7,086	129	0
29	\$2,018.23	7,141	7,056	124	0
30	\$1,778.40	7,107	7,022	124	0
31	\$2,014.29	7,131	7,052	119	0
32	\$2,509.47	7,164	7,089	114	0
33	\$2,525.60	7,176	7,106	109	0
34	\$2,535.55	7,170	7,100	109	0
35	\$2,519.65	7,144	7,084	99	0
36	\$1,778.38	7,064	7,004	99	0
37	\$1,596.82	7,001	6,940	99	0
38	\$1,778.49	7,041	6,980	99	0
39	\$2,017.92	7,056	6,995	99	0
40	\$2,525.30	7,034	6,974	99	0
41	\$2,522.79	7,007	6,947	99	0
42	\$2,018.20	6,944	6,883	99	0
43	\$2,017.44	6,874	6,813	99	0
44	\$1,603.02	6,730	6,668	99	0
45	\$323.50	6,591	6,527	99	0
46	\$687.20	6,455	6,390	99	0
47	\$267.96	6,317	6,251	99	0
48	\$206.77	6,151	6,083	99	0

Disclaimer

This Report is prepared and provided for general information purposes only. Information in this Report was obtained or derived from sources that the Energy Market Company Pte Ltd (EMC) considers reliable. All reasonable care has been taken to ensure that stated facts are accurate and opinions fair and reasonable at time of printing. EMC does not represent that information in this Report is accurate or complete and it should not be relied upon as such. In particular, in presentation of charts, certain assumptions were made which may not be stated therein. As such, EMC assumes no fiduciary responsibility or liability for any construction or interpretation you may take based on the information contained nor for any consequences, financial or otherwise, from transactions where information in this Report may be relied upon. You should make your own appraisal and should consult, to the extent necessary, your own professional advisors to ensure that any decision made based on the information in this Report is suitable for your circumstances. If you have any specific queries about this Report or its contents, you should contact us at marketoperations-B@emcsg.com.