

Daily Trading Report

11 October 2021

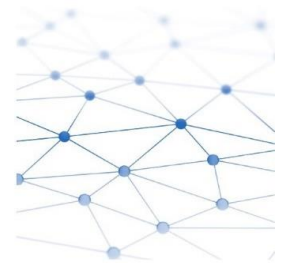
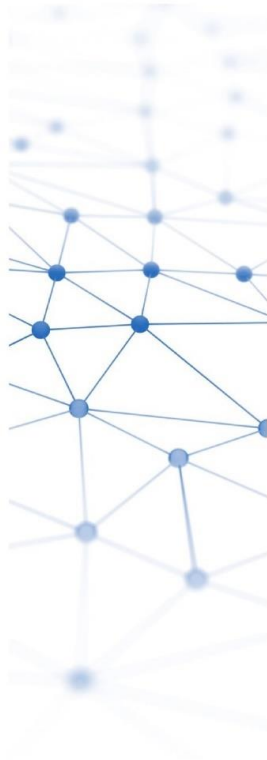


Figure 1: Forecasted Demand vs USEP

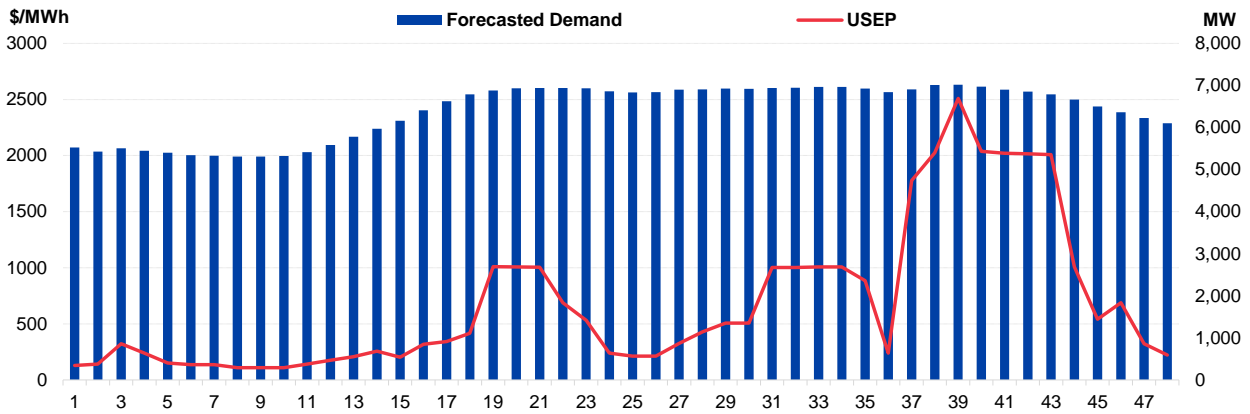


Figure 2: Periodic Ancillary Prices

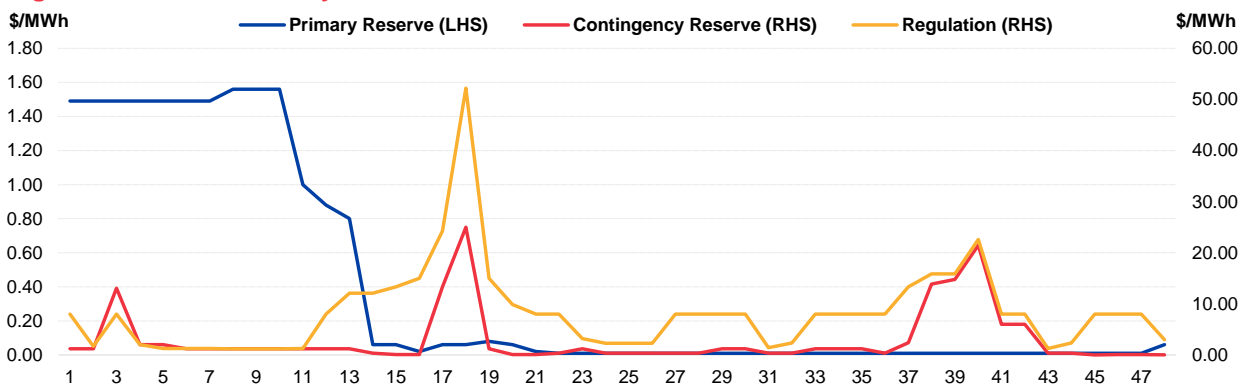


Figure 3: Daily Data Comparison

	Forecasted Demand (MW)	Total Supply (MW)	Energy Price (\$/MWh)
Weekday Ranking*	72 out of 4719	627 out of 4719	5 out of 4719
Daily Average	6,403	8,198	679.81
Previous day	6,065	7,534	715.79
Change (%)	5.6%	8.8%	-5.0%
Daily Max	7,018	8,376	2509.35
Previous day	6,522	7,998	3193.68
Change (%)	7.6%	4.7%	-21.4%
Daily Min	5,312	7,810	109.46
Previous day	5,549	7,054	140.63
Change (%)	-4.3%	10.7%	-22.2%

	Primary Reserve Price (\$/MWh)	Contingency Reserve Price (\$/MWh)	Regulation Price (\$/MWh)
Daily Average	0.39	3.02	8.30
Previous day	5.39	36.47	88.36
Change (%)	-92.8%	-91.7%	-90.6%
Daily Max	1.56	25.00	52.20
Previous day	25.00	183.83	183.51
Change (%)	-93.8%	-86.4%	-71.6%
Daily Min	0.01	0.01	1.20
Previous day	0.08	1.20	8.00
Change (%)	-87.5%	-99.2%	-85.0%

*Ranking denotes the relative position of the market parameter since 1 Jan 2003.

Figure 4: Seven Days of Daily USEP vs Daily Forecasted Demand

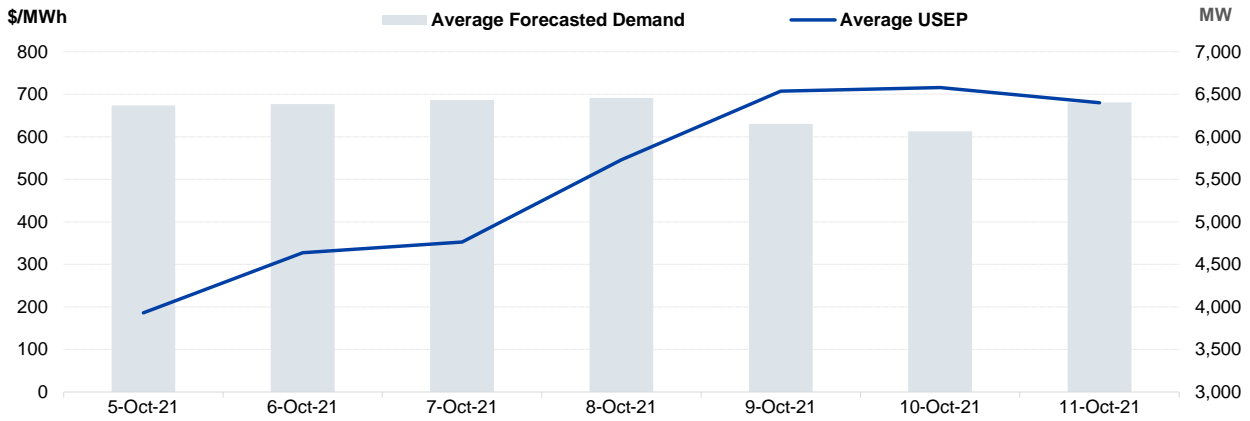


Figure 5: Seven Days USEP Average-Max-Min

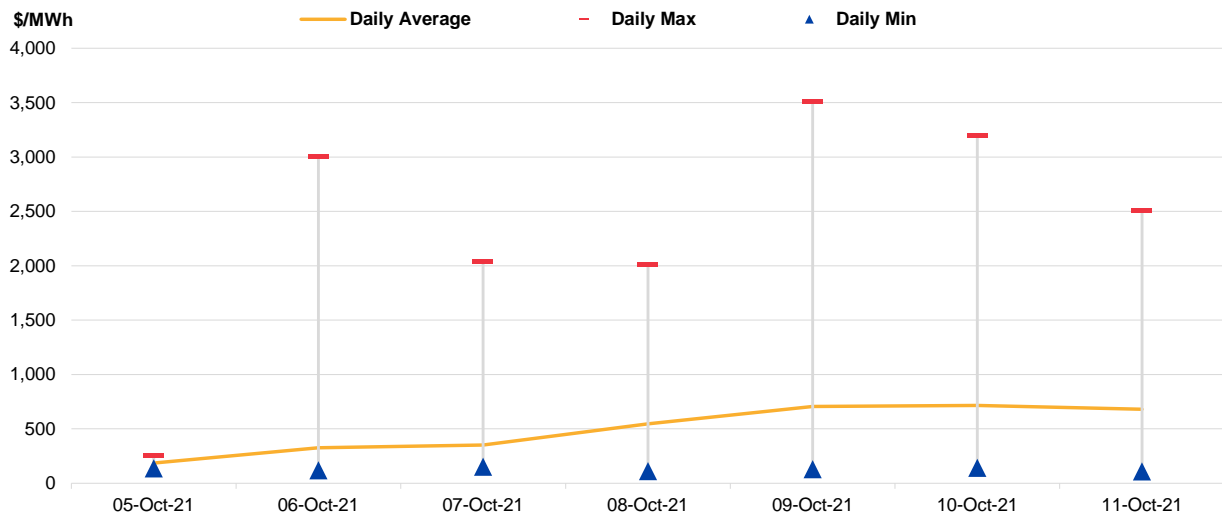


Figure 6: Seven Days Forecasted Demand Average-Max-Min

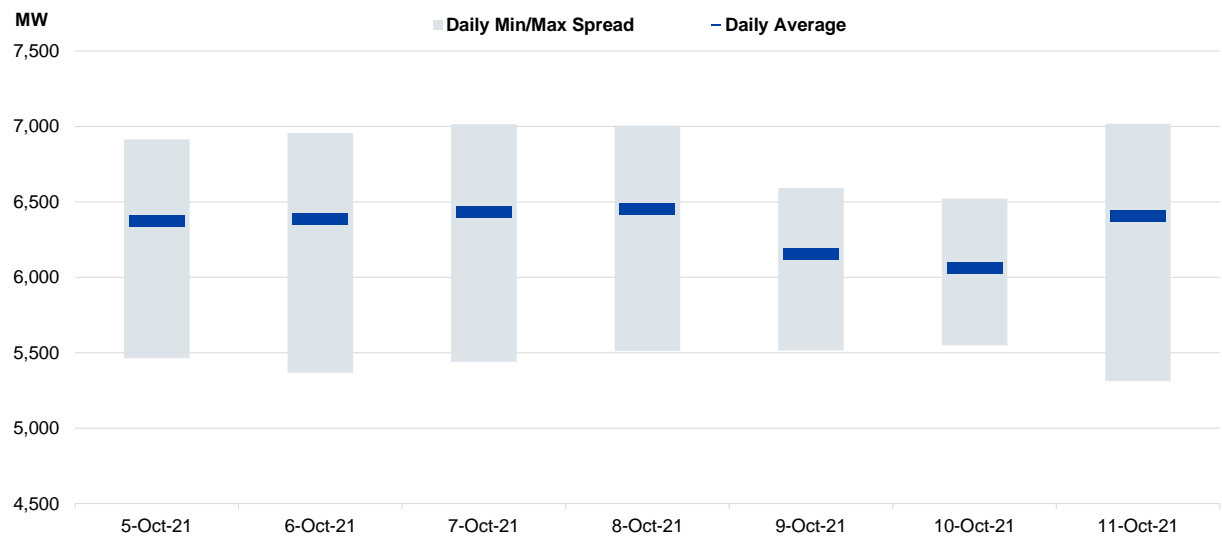


Figure 7: Daily Generation Plant Utilization Rate

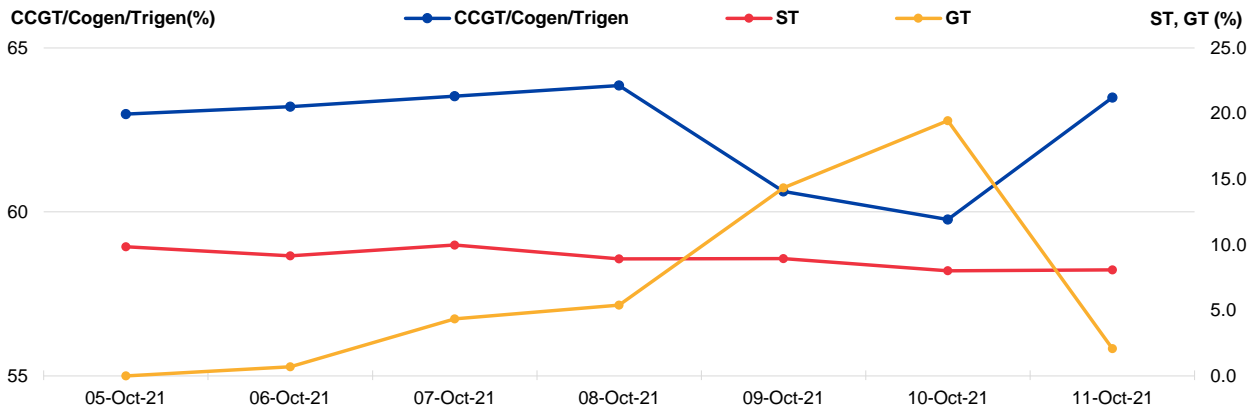


Figure 8: Daily Trading Data Table

	Tue 05-Oct-21	Wed 06-Oct-21	Thu 07-Oct-21	Fri 08-Oct-21	Sat 09-Oct-21	Sun 10-Oct-21	Mon 11-Oct-21
Forecasted Demand (MW)							
Daily Average	6,370	6,386	6,433	6,455	6,151	6,065	6,403
Daily Maximum	6,913	6,956	7,015	7,005	6,590	6,522	7,018
Daily Minimum	5,464	5,366	5,440	5,512	5,515	5,549	5,312
Total Supply (MW)							
Daily Average	8,158	8,154	8,253	8,234	7,550	7,534	8,198
Daily Maximum	8,324	8,319	8,506	8,485	7,845	7,998	8,376
Daily Minimum	7,774	7,761	7,762	7,838	7,204	7,054	7,810
Energy Price (\$/MWh)							
Daily Average	186.12	327.19	352.55	546.06	707.31	715.79	679.81
Daily Maximum	258.01	3007.35	2039.38	2007.23	3506.72	3193.68	2509.35
Daily Minimum	136.85	118.75	151.11	110.61	129.46	140.63	109.46
Reserve & Regulation Prices (\$/MWh)							
Primary	0.02	0.03	0.04	0.23	8.68	5.39	0.39
Contingency	0.19	3.42	1.56	3.84	42.55	36.47	3.02
Regulation	16.74	34.90	9.46	9.09	77.33	88.36	8.30
Reserve & Regulation Requirement (MW)							
Primary	166	171	162	161	196	187	163
Contingency	600	604	601	601	624	617	599
Regulation	114	114	114	114	114	114	114
Generation (MW)							
CCGT/Cogen/Trigen	6,288	6,311	6,343	6,375	6,053	5,967	6,339
ST	114	106	115	103	103	92	93
GT	0	1	8	10	26	35	4

Periodic Trading Data

Figure 9: Periodic Trading Data Table

Period	USEP (\$/MWh)	Forecasted Demand (MW)	CCGT/Cogen/Trigen Generation (MW)	ST Generation (MW)	GT Generation (MW)
1	\$127.89	5,527	5,464	89	0
2	\$141.48	5,430	5,366	89	0
3	\$323.28	5,503	5,440	89	0
4	\$238.50	5,446	5,382	89	0
5	\$151.15	5,402	5,338	89	0
6	\$135.95	5,345	5,279	89	0
7	\$135.94	5,327	5,262	89	0
8	\$109.47	5,312	5,247	89	0
9	\$109.46	5,312	5,246	89	0
10	\$109.47	5,323	5,257	89	0
11	\$139.99	5,412	5,347	89	0
12	\$176.45	5,585	5,521	89	0
13	\$206.90	5,781	5,719	89	0
14	\$257.02	5,971	5,910	89	0
15	\$201.53	6,159	6,100	89	0
16	\$317.28	6,407	6,349	89	0
17	\$343.51	6,626	6,571	89	0
18	\$415.84	6,787	6,734	89	0
19	\$1,010.12	6,879	6,826	89	0
20	\$1,006.28	6,930	6,878	89	0
21	\$1,003.65	6,939	6,887	89	0
22	\$687.30	6,941	6,890	89	0
23	\$530.65	6,931	6,880	89	0
24	\$238.07	6,863	6,811	89	0
25	\$212.40	6,833	6,781	89	0
26	\$212.38	6,841	6,779	99	0
27	\$324.01	6,898	6,837	99	0
28	\$427.62	6,908	6,846	99	0
29	\$506.93	6,925	6,864	99	0
30	\$506.98	6,919	6,857	99	0
31	\$1,002.93	6,942	6,882	99	0
32	\$1,003.58	6,948	6,887	99	0
33	\$1,008.40	6,966	6,906	99	0
34	\$1,008.34	6,963	6,902	99	0
35	\$885.52	6,925	6,864	99	0
36	\$238.11	6,839	6,777	99	0
37	\$1,778.19	6,909	6,848	99	0
38	\$2,025.29	7,014	6,894	99	60
39	\$2,509.35	7,018	6,897	99	60
40	\$2,039.04	6,973	6,853	99	60
41	\$2,020.62	6,902	6,842	99	0
42	\$2,015.33	6,855	6,794	99	0
43	\$2,007.25	6,790	6,728	99	0
44	\$1,006.69	6,663	6,600	99	0
45	\$542.12	6,501	6,437	99	0
46	\$687.22	6,362	6,296	99	0
47	\$323.44	6,224	6,157	99	0
48	\$222.15	6,102	6,034	99	0

Disclaimer

This Report is prepared and provided for general information purposes only. Information in this Report was obtained or derived from sources that the Energy Market Company Pte Ltd (EMC) considers reliable. All reasonable care has been taken to ensure that stated facts are accurate and opinions fair and reasonable at time of printing. EMC does not represent that information in this Report is accurate or complete and it should not be relied upon as such. In particular, in presentation of charts, certain assumptions were made which may not be stated therein. As such, EMC assumes no fiduciary responsibility or liability for any construction or interpretation you may take based on the information contained nor for any consequences, financial or otherwise, from transactions where information in this Report may be relied upon. You should make your own appraisal and should consult, to the extent necessary, your own professional advisors to ensure that any decision made based on the information in this Report is suitable for your circumstances. If you have any specific queries about this Report or its contents, you should contact us at marketoperations-B@emcsg.com.