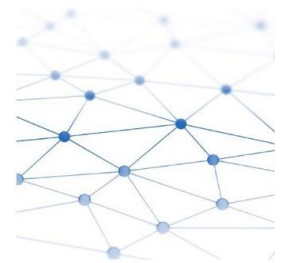
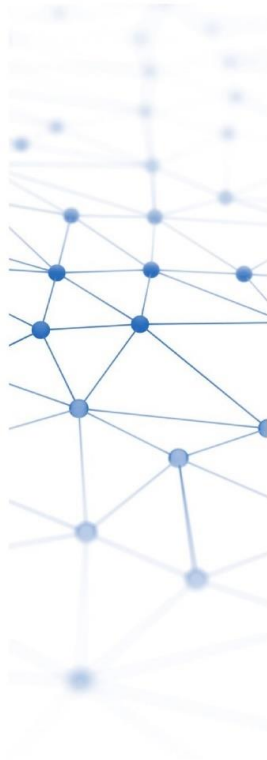
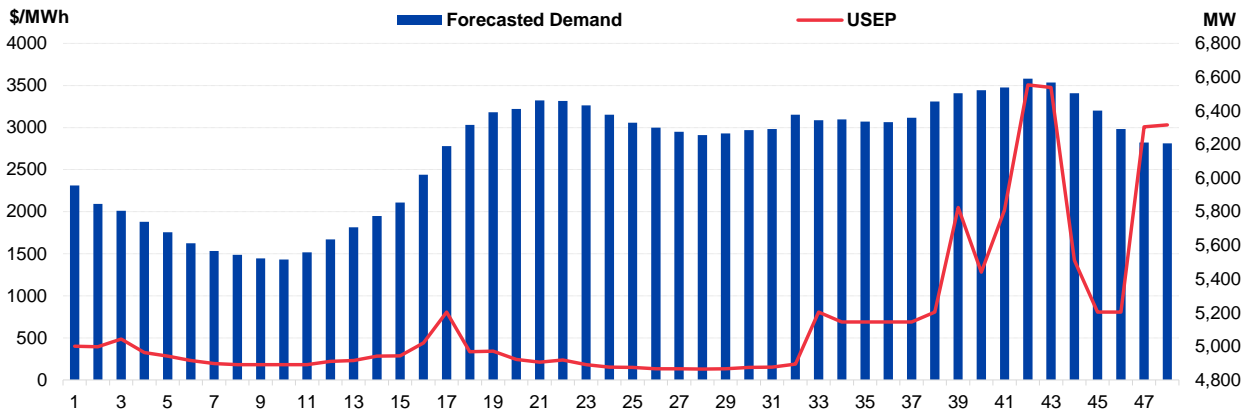


# Daily Trading Report

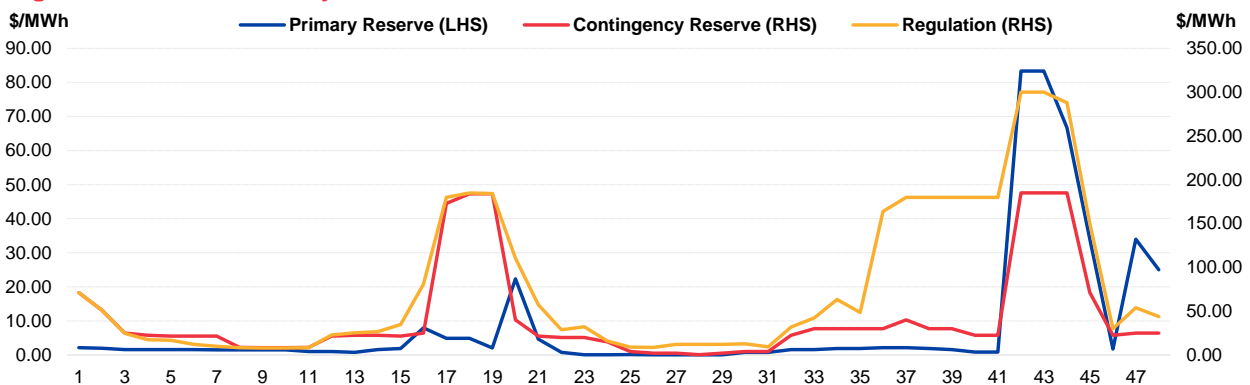
## 09 October 2021



**Figure 1: Forecasted Demand vs USEP**



**Figure 2: Periodic Ancillary Prices**



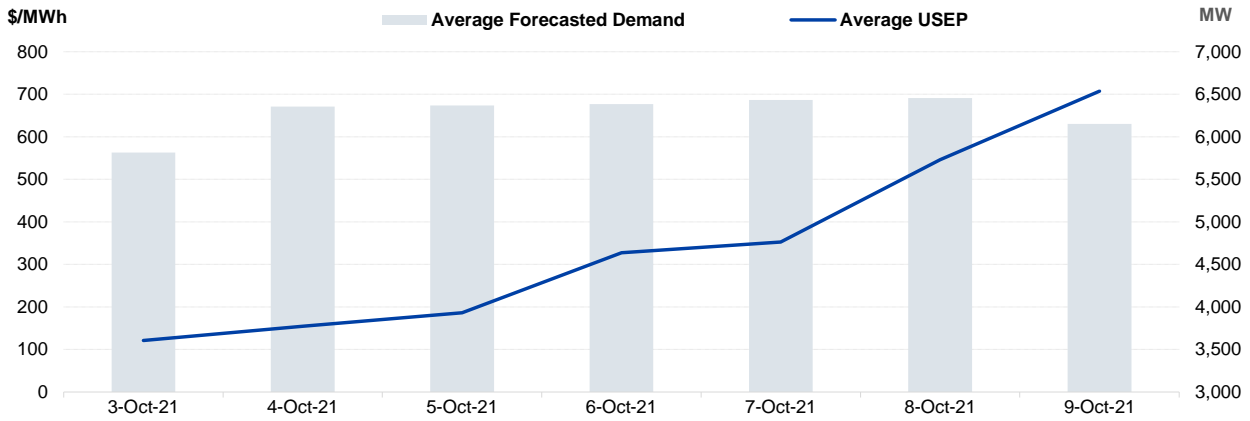
**Figure 3: Daily Data Comparison**

	Forecasted Demand (MW)	Total Supply (MW)	Energy Price (\$/MWh)
Saturday Ranking*	3 out of 954	278 out of 954	1 out of 954
Daily Average	6,151	7,550	707.31
Previous day	6,455	8,234	546.06
Change (%)	-4.7%	-8.3%	29.5%
Daily Max	6,590	7,845	3506.72
Previous day	7,005	8,485	2007.23
Change (%)	-5.9%	-7.5%	74.7%
Daily Min	5,515	7,204	129.46
Previous day	5,512	7,838	110.61
Change (%)	0.1%	-8.1%	17.0%

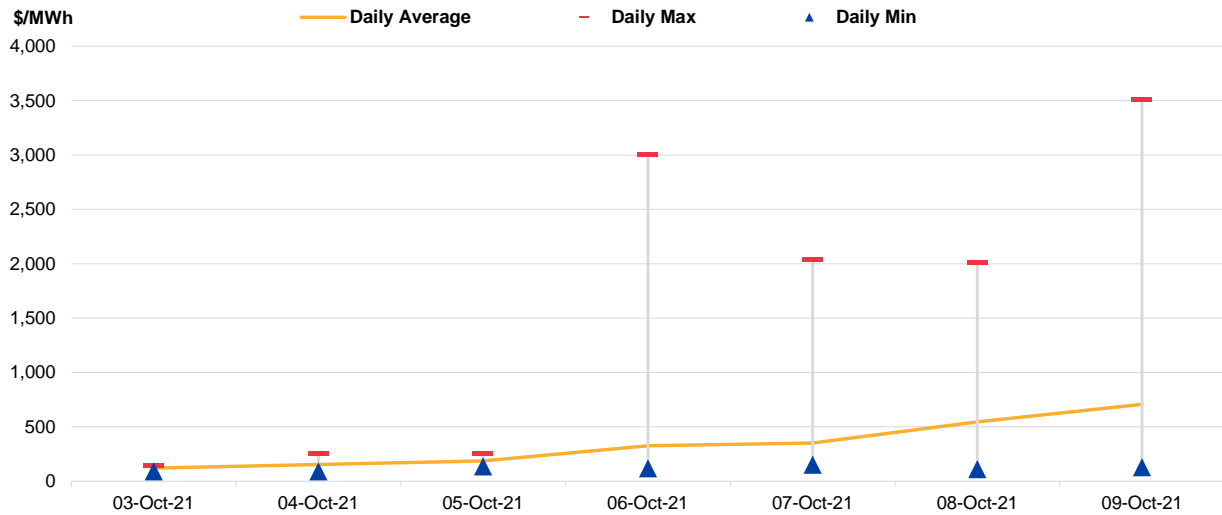
	Primary Reserve Price (\$/MWh)	Contingency Reserve Price (\$/MWh)	Regulation Price (\$/MWh)
Daily Average	8.68	42.55	77.33
Previous day	0.23	3.84	9.09
Change (%)	3673.9%	1008.2%	750.8%
Daily Max	83.33	185.00	300.00
Previous day	1.00	22.48	23.27
Change (%)	8233.0%	723.0%	1189.2%
Daily Min	0.06	0.33	8.00
Previous day	0.01	0.01	1.00
Change (%)	500.0%	3200.0%	700.0%

\*Ranking denotes the relative position of the market parameter since 1 Jan 2003.

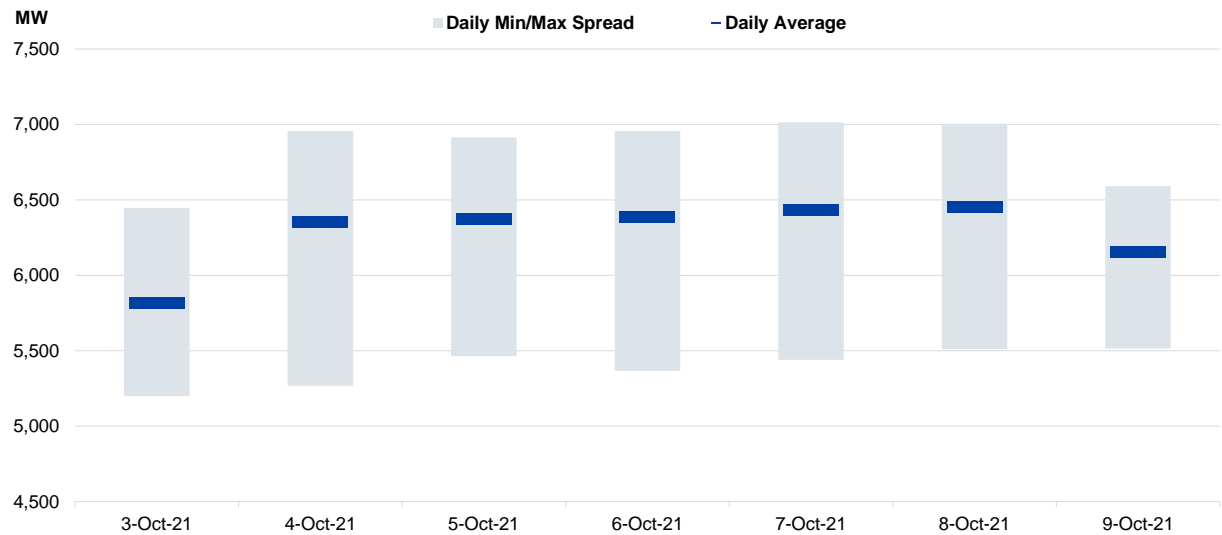
**Figure 4: Seven Days of Daily USEP vs Daily Forecasted Demand**



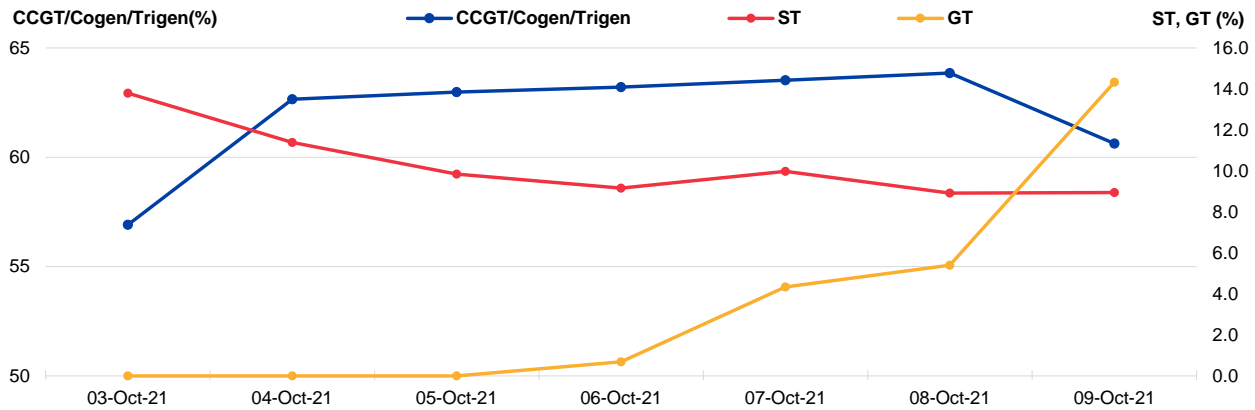
**Figure 5: Seven Days USEP Average-Max-Min**



**Figure 6: Seven Days Forecasted Demand Average-Max-Min**



**Figure 7: Daily Generation Plant Utilization Rate**



**Figure 8: Daily Trading Data Table**

	Sun 03-Oct-21	Mon 04-Oct-21	Tue 05-Oct-21	Wed 06-Oct-21	Thu 07-Oct-21	Fri 08-Oct-21	Sat 09-Oct-21
<b>Forecasted Demand (MW)</b>							
Daily Average	5,814	6,355	6,370	6,386	6,433	6,455	6,151
Daily Maximum	6,448	6,955	6,913	6,956	7,015	7,005	6,590
Daily Minimum	5,199	5,269	5,464	5,366	5,440	5,512	5,515
<b>Total Supply (MW)</b>							
Daily Average	7,783	8,225	8,158	8,154	8,253	8,234	7,550
Daily Maximum	7,948	8,573	8,324	8,319	8,506	8,485	7,845
Daily Minimum	7,591	7,818	7,774	7,761	7,762	7,838	7,204
<b>Energy Price (\$/MWh)</b>							
Daily Average	121.10	154.70	186.12	327.19	352.55	546.06	707.31
Daily Maximum	146.40	254.76	258.01	3007.35	2039.38	2007.23	3506.72
Daily Minimum	91.13	91.17	136.85	118.75	151.11	110.61	129.46
<b>Reserve &amp; Regulation Prices (\$/MWh)</b>							
Primary	1.08	0.09	0.02	0.03	0.04	0.23	8.68
Contingency	8.42	1.24	0.19	3.42	1.56	3.84	42.55
Regulation	9.50	3.28	16.74	34.90	9.46	9.09	77.33
<b>Reserve &amp; Regulation Requirement (MW)</b>							
Primary	190	166	166	171	162	161	196
Contingency	609	600	600	604	601	601	624
Regulation	114	114	114	114	114	114	114
<b>Generation (MW)</b>							
CCGT/Cogen/Trigen	5,682	6,256	6,288	6,311	6,343	6,375	6,053
ST	159	131	114	106	115	103	103
GT	0	0	0	1	8	10	26

# Periodic Trading Data

Figure 9: Periodic Trading Data Table

Period	USEP (\$/MWh)	Forecasted Demand (MW)	CCGT/Cogen/Trigen Generation (MW)	ST Generation (MW)	GT Generation (MW)
1	\$401.00	5,956	5,887	99	0
2	\$395.20	5,845	5,776	99	0
3	\$486.66	5,806	5,735	99	0
4	\$324.53	5,739	5,668	99	0
5	\$282.28	5,677	5,605	99	0
6	\$229.41	5,612	5,539	99	0
7	\$194.54	5,566	5,483	109	0
8	\$181.54	5,543	5,460	109	0
9	\$181.15	5,522	5,439	109	0
10	\$181.08	5,515	5,431	109	0
11	\$181.53	5,558	5,475	109	0
12	\$219.86	5,636	5,553	109	0
13	\$232.02	5,707	5,625	109	0
14	\$282.15	5,774	5,692	109	0
15	\$287.19	5,854	5,772	109	0
16	\$439.18	6,019	5,940	109	0
17	\$807.17	6,190	6,112	109	0
18	\$336.46	6,316	6,239	109	0
19	\$341.83	6,391	6,315	109	0
20	\$242.98	6,411	6,335	109	0
21	\$209.72	6,461	6,386	109	0
22	\$237.23	6,458	6,382	109	0
23	\$180.25	6,432	6,357	109	0
24	\$151.21	6,377	6,301	109	0
25	\$147.69	6,329	6,252	109	0
26	\$133.10	6,299	6,223	109	0
27	\$132.07	6,275	6,198	109	0
28	\$129.46	6,256	6,178	109	0
29	\$131.56	6,265	6,187	109	0
30	\$147.38	6,285	6,218	99	0
31	\$151.21	6,291	6,224	99	0
32	\$187.57	6,376	6,310	99	0
33	\$807.11	6,343	6,278	99	0
34	\$690.09	6,349	6,238	99	45
35	\$690.11	6,335	6,225	99	45
36	\$690.11	6,333	6,222	99	45
37	\$690.19	6,357	6,247	99	45
38	\$807.49	6,455	6,346	99	45
39	\$2,051.25	6,504	6,380	99	60
40	\$1,281.90	6,522	6,369	99	90
41	\$2,017.69	6,538	6,382	99	92
42	\$3,506.72	6,590	6,368	99	160
43	\$3,477.21	6,568	6,345	99	160
44	\$1,420.68	6,504	6,335	99	105
45	\$807.83	6,400	6,231	99	105
46	\$807.35	6,292	6,122	99	105
47	\$3,008.85	6,211	6,085	99	60
48	\$3,029.88	6,206	6,064	99	76

**Disclaimer**

This Report is prepared and provided for general information purposes only. Information in this Report was obtained or derived from sources that the Energy Market Company Pte Ltd (EMC) considers reliable. All reasonable care has been taken to ensure that stated facts are accurate and opinions fair and reasonable at time of printing. EMC does not represent that information in this Report is accurate or complete and it should not be relied upon as such. In particular, in presentation of charts, certain assumptions were made which may not be stated therein. As such, EMC assumes no fiduciary responsibility or liability for any construction or interpretation you may take based on the information contained nor for any consequences, financial or otherwise, from transactions where information in this Report may be relied upon. You should make your own appraisal and should consult, to the extent necessary, your own professional advisors to ensure that any decision made based on the information in this Report is suitable for your circumstances. If you have any specific queries about this Report or its contents, you should contact us at [marketoperations-B@emcsg.com](mailto:marketoperations-B@emcsg.com).