

Daily Trading Report

08 October 2021

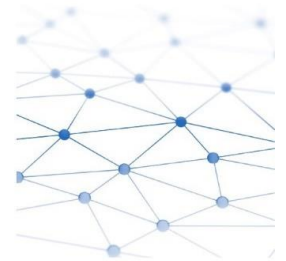
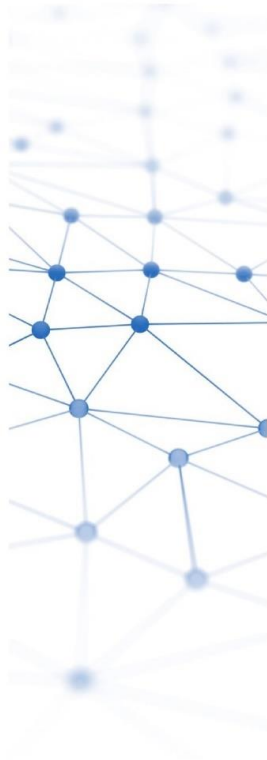


Figure 1: Forecasted Demand vs USEP

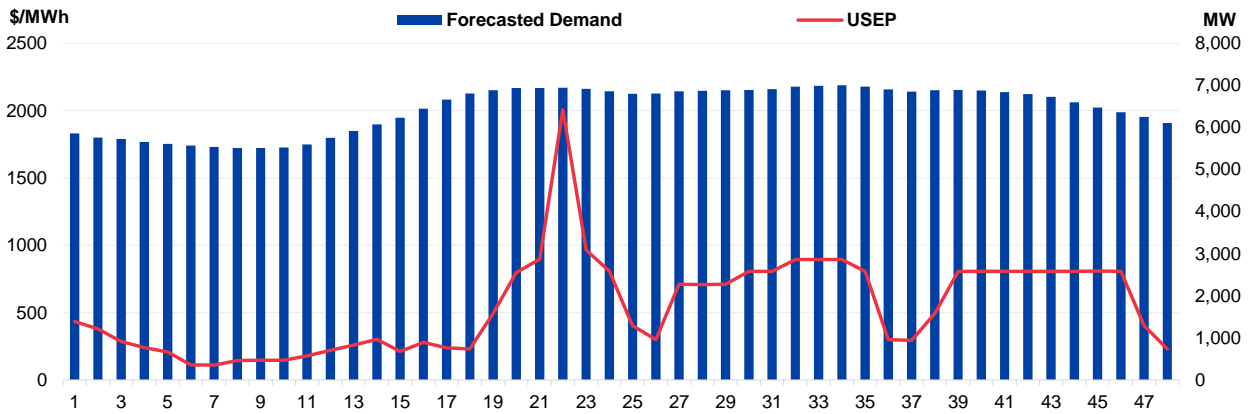


Figure 2: Periodic Ancillary Prices

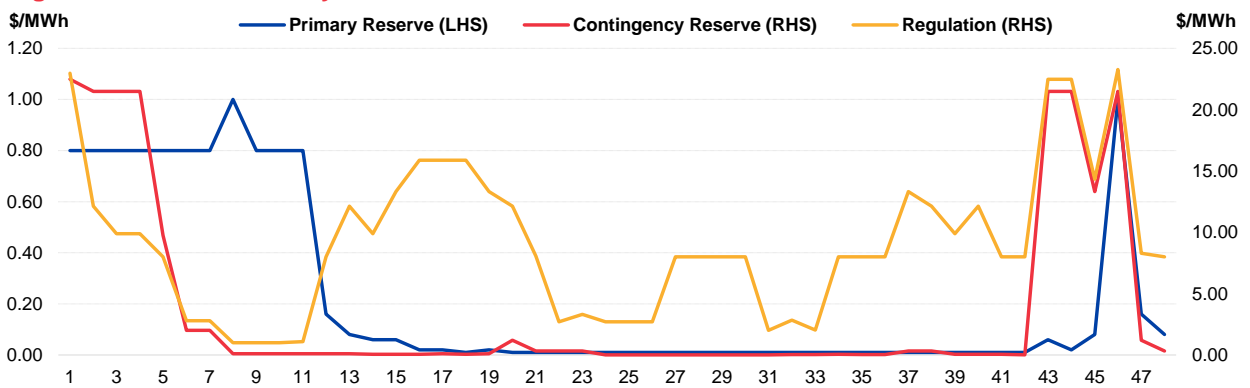


Figure 3: Daily Data Comparison

| | Forecasted Demand (MW) | Total Supply (MW) | Energy Price (\$/MWh) |
|------------------|------------------------|-------------------|-----------------------|
| Weekday Ranking* | 31 out of 4718 | 530 out of 4718 | 7 out of 4718 |
| Daily Average | 6,455 | 8,234 | 546.06 |
| Previous day | 6,433 | 8,253 | 352.55 |
| Change (%) | 0.3% | -0.2% | 54.9% |
| Daily Max | 7,005 | 8,485 | 2007.23 |
| Previous day | 7,015 | 8,506 | 2039.38 |
| Change (%) | -0.1% | -0.2% | -1.6% |
| Daily Min | 5,512 | 7,838 | 110.61 |
| Previous day | 5,440 | 7,762 | 151.11 |
| Change (%) | 1.3% | 1.0% | -26.8% |

| | Primary Reserve Price (\$/MWh) | Contingency Reserve Price (\$/MWh) | Regulation Price (\$/MWh) |
|---------------|--------------------------------|------------------------------------|---------------------------|
| Daily Average | 0.23 | 3.84 | 9.09 |
| Previous day | 0.04 | 1.56 | 9.46 |
| Change (%) | 475.0% | 145.7% | -4.0% |
| Daily Max | 1.00 | 22.48 | 23.27 |
| Previous day | 0.16 | 22.48 | 42.83 |
| Change (%) | 525.0% | 0.0% | -45.7% |
| Daily Min | 0.01 | 0.01 | 1.00 |
| Previous day | 0.01 | 0.01 | 1.00 |
| Change (%) | 0.0% | 0.0% | 0.0% |

*Ranking denotes the relative position of the market parameter since 1 Jan 2003.

Figure 4: Seven Days of Daily USEP vs Daily Forecasted Demand

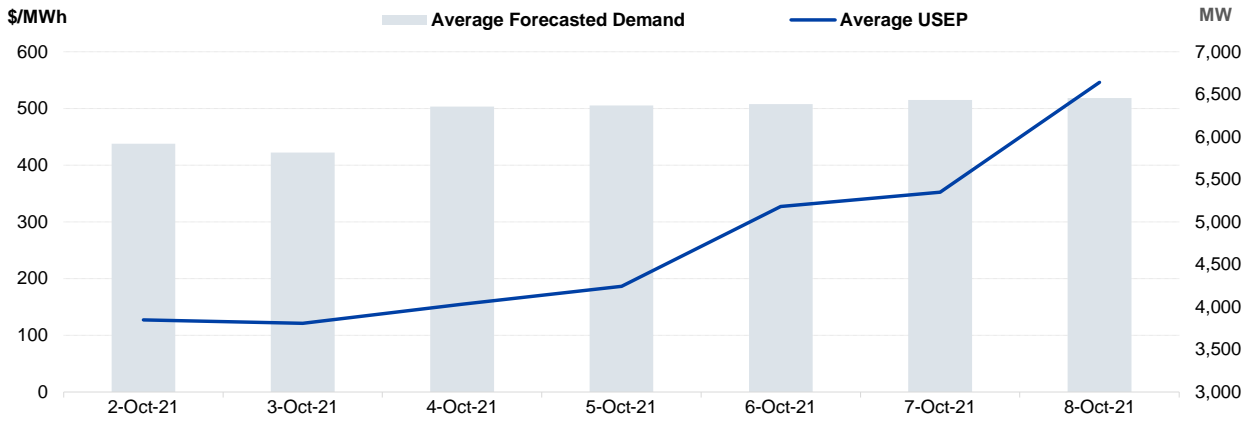


Figure 5: Seven Days USEP Average-Max-Min

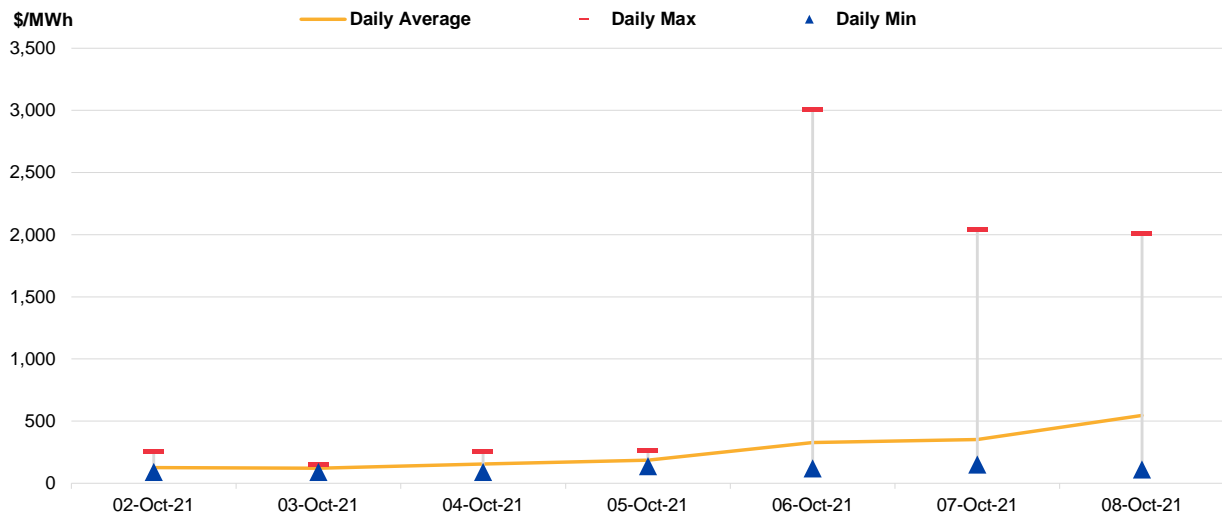


Figure 6: Seven Days Forecasted Demand Average-Max-Min

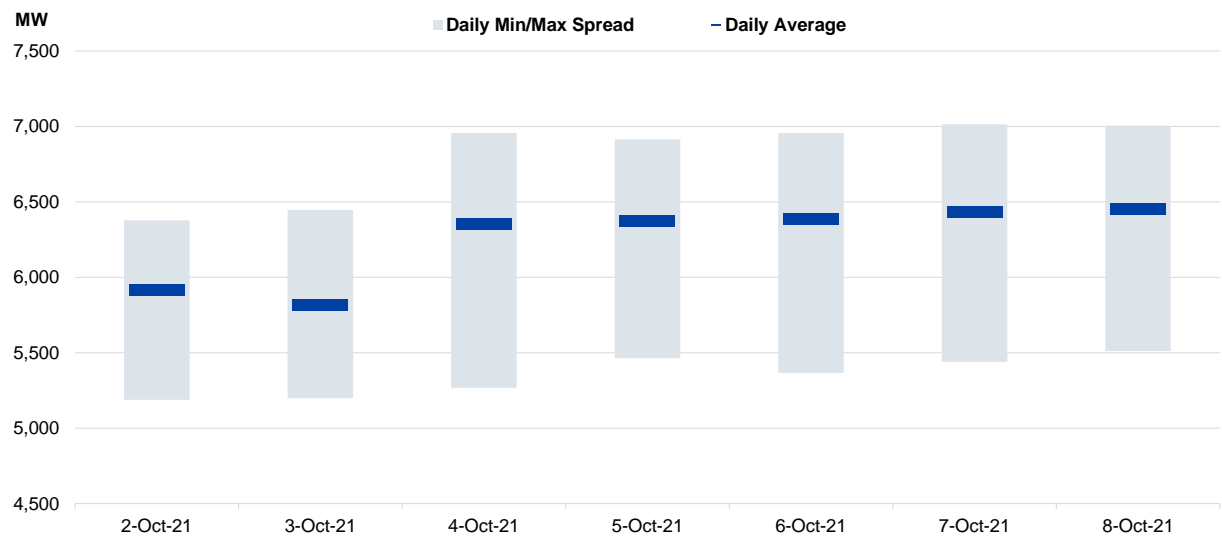


Figure 7: Daily Generation Plant Utilization Rate

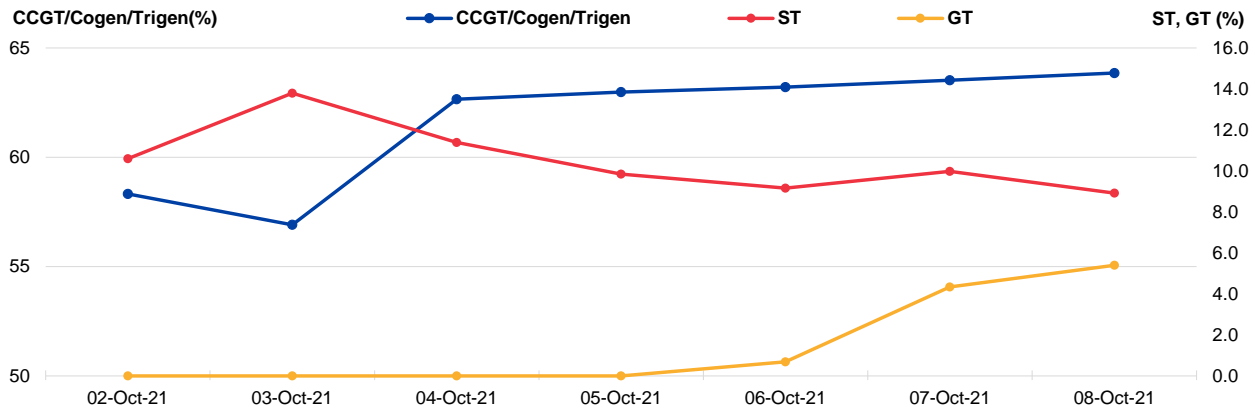


Figure 8: Daily Trading Data Table

| | Sat 02-Oct-21 | Sun 03-Oct-21 | Mon 04-Oct-21 | Tue 05-Oct-21 | Wed 06-Oct-21 | Thu 07-Oct-21 | Fri 08-Oct-21 |
|--|------------------|------------------|------------------|------------------|------------------|------------------|------------------|
| Forecasted Demand (MW) | | | | | | | |
| Daily Average | 5,918 | 5,814 | 6,355 | 6,370 | 6,386 | 6,433 | 6,455 |
| Daily Maximum | 6,377 | 6,448 | 6,955 | 6,913 | 6,956 | 7,015 | 7,005 |
| Daily Minimum | 5,189 | 5,199 | 5,269 | 5,464 | 5,366 | 5,440 | 5,512 |
| Total Supply (MW) | | | | | | | |
| Daily Average | 7,854 | 7,783 | 8,225 | 8,158 | 8,154 | 8,253 | 8,234 |
| Daily Maximum | 7,936 | 7,948 | 8,573 | 8,324 | 8,319 | 8,506 | 8,485 |
| Daily Minimum | 7,741 | 7,591 | 7,818 | 7,774 | 7,761 | 7,762 | 7,838 |
| Energy Price (\$/MWh) | | | | | | | |
| Daily Average | 127.03 | 121.10 | 154.70 | 186.12 | 327.19 | 352.55 | 546.06 |
| Daily Maximum | 257.87 | 146.40 | 254.76 | 258.01 | 3007.35 | 2039.38 | 2007.23 |
| Daily Minimum | 90.59 | 91.13 | 91.17 | 136.85 | 118.75 | 151.11 | 110.61 |
| Reserve & Regulation Prices (\$/MWh) | | | | | | | |
| Primary | 0.21 | 1.08 | 0.09 | 0.02 | 0.03 | 0.04 | 0.23 |
| Contingency | 13.09 | 8.42 | 1.24 | 0.19 | 3.42 | 1.56 | 3.84 |
| Regulation | 15.25 | 9.50 | 3.28 | 16.74 | 34.90 | 9.46 | 9.09 |
| Reserve & Regulation Requirement (MW) | | | | | | | |
| Primary | 195 | 190 | 166 | 166 | 171 | 162 | 161 |
| Contingency | 613 | 609 | 600 | 600 | 604 | 601 | 601 |
| Regulation | 114 | 114 | 114 | 114 | 114 | 114 | 114 |
| Generation (MW) | | | | | | | |
| CCGT/Cogen/Trigen | 5,823 | 5,682 | 6,256 | 6,288 | 6,311 | 6,343 | 6,375 |
| ST | 122 | 159 | 131 | 114 | 106 | 115 | 103 |
| GT | 0 | 0 | 0 | 0 | 1 | 8 | 10 |

Periodic Trading Data

Figure 9: Periodic Trading Data Table

| Period | USEP (\$/MWh) | Forecasted Demand (MW) | CCGT/Cogen/Trigen Generation (MW) | ST Generation (MW) | GT Generation (MW) |
|--------|---------------|------------------------|-----------------------------------|--------------------|--------------------|
| 1 | \$435.47 | 5,859 | 5,773 | 114 | 0 |
| 2 | \$379.93 | 5,760 | 5,673 | 114 | 0 |
| 3 | \$284.29 | 5,728 | 5,641 | 114 | 0 |
| 4 | \$239.30 | 5,657 | 5,569 | 114 | 0 |
| 5 | \$208.40 | 5,610 | 5,522 | 114 | 0 |
| 6 | \$111.39 | 5,571 | 5,483 | 114 | 0 |
| 7 | \$110.61 | 5,540 | 5,451 | 114 | 0 |
| 8 | \$143.88 | 5,512 | 5,422 | 114 | 0 |
| 9 | \$146.30 | 5,516 | 5,426 | 114 | 0 |
| 10 | \$146.29 | 5,528 | 5,438 | 114 | 0 |
| 11 | \$178.77 | 5,599 | 5,510 | 114 | 0 |
| 12 | \$219.19 | 5,758 | 5,671 | 114 | 0 |
| 13 | \$257.73 | 5,920 | 5,834 | 114 | 0 |
| 14 | \$301.24 | 6,076 | 5,992 | 114 | 0 |
| 15 | \$211.64 | 6,231 | 6,148 | 114 | 0 |
| 16 | \$279.02 | 6,449 | 6,368 | 114 | 0 |
| 17 | \$237.96 | 6,665 | 6,585 | 114 | 0 |
| 18 | \$229.31 | 6,807 | 6,729 | 114 | 0 |
| 19 | \$494.53 | 6,888 | 6,836 | 89 | 0 |
| 20 | \$799.02 | 6,937 | 6,886 | 89 | 0 |
| 21 | \$896.28 | 6,940 | 6,889 | 89 | 0 |
| 22 | \$2,007.23 | 6,943 | 6,892 | 89 | 0 |
| 23 | \$963.55 | 6,921 | 6,870 | 89 | 0 |
| 24 | \$809.05 | 6,858 | 6,806 | 89 | 0 |
| 25 | \$403.51 | 6,804 | 6,721 | 89 | 31 |
| 26 | \$298.98 | 6,805 | 6,753 | 89 | 0 |
| 27 | \$709.64 | 6,859 | 6,763 | 89 | 45 |
| 28 | \$709.56 | 6,873 | 6,777 | 89 | 45 |
| 29 | \$709.63 | 6,884 | 6,787 | 89 | 45 |
| 30 | \$807.51 | 6,892 | 6,796 | 89 | 45 |
| 31 | \$807.61 | 6,914 | 6,811 | 96 | 45 |
| 32 | \$895.20 | 6,974 | 6,865 | 103 | 45 |
| 33 | \$895.25 | 6,990 | 6,869 | 114 | 45 |
| 34 | \$895.61 | 7,005 | 6,885 | 114 | 45 |
| 35 | \$807.38 | 6,971 | 6,850 | 114 | 45 |
| 36 | \$298.94 | 6,906 | 6,800 | 114 | 30 |
| 37 | \$293.84 | 6,853 | 6,790 | 99 | 0 |
| 38 | \$494.51 | 6,890 | 6,828 | 99 | 0 |
| 39 | \$807.42 | 6,891 | 6,830 | 99 | 0 |
| 40 | \$807.55 | 6,880 | 6,819 | 99 | 0 |
| 41 | \$807.46 | 6,841 | 6,779 | 99 | 0 |
| 42 | \$807.46 | 6,793 | 6,731 | 99 | 0 |
| 43 | \$807.68 | 6,729 | 6,667 | 99 | 0 |
| 44 | \$807.48 | 6,596 | 6,533 | 99 | 0 |
| 45 | \$807.75 | 6,472 | 6,409 | 99 | 0 |
| 46 | \$807.23 | 6,363 | 6,299 | 99 | 0 |
| 47 | \$403.48 | 6,252 | 6,187 | 99 | 0 |
| 48 | \$229.83 | 6,108 | 6,041 | 99 | 0 |

Disclaimer

This Report is prepared and provided for general information purposes only. Information in this Report was obtained or derived from sources that the Energy Market Company Pte Ltd (EMC) considers reliable. All reasonable care has been taken to ensure that stated facts are accurate and opinions fair and reasonable at time of printing. EMC does not represent that information in this Report is accurate or complete and it should not be relied upon as such. In particular, in presentation of charts, certain assumptions were made which may not be stated therein. As such, EMC assumes no fiduciary responsibility or liability for any construction or interpretation you may take based on the information contained nor for any consequences, financial or otherwise, from transactions where information in this Report may be relied upon. You should make your own appraisal and should consult, to the extent necessary, your own professional advisors to ensure that any decision made based on the information in this Report is suitable for your circumstances. If you have any specific queries about this Report or its contents, you should contact us at marketoperations-B@emcsg.com.