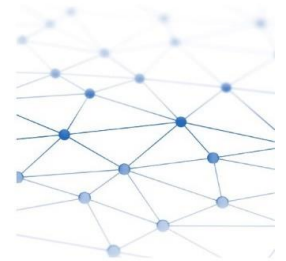
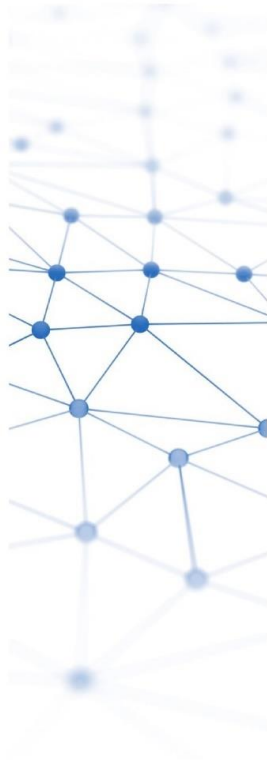
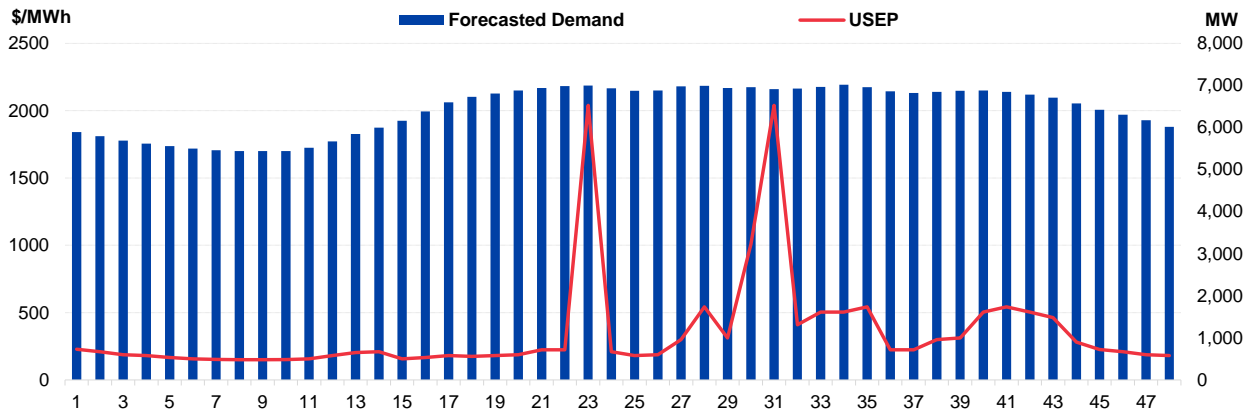


# Daily Trading Report

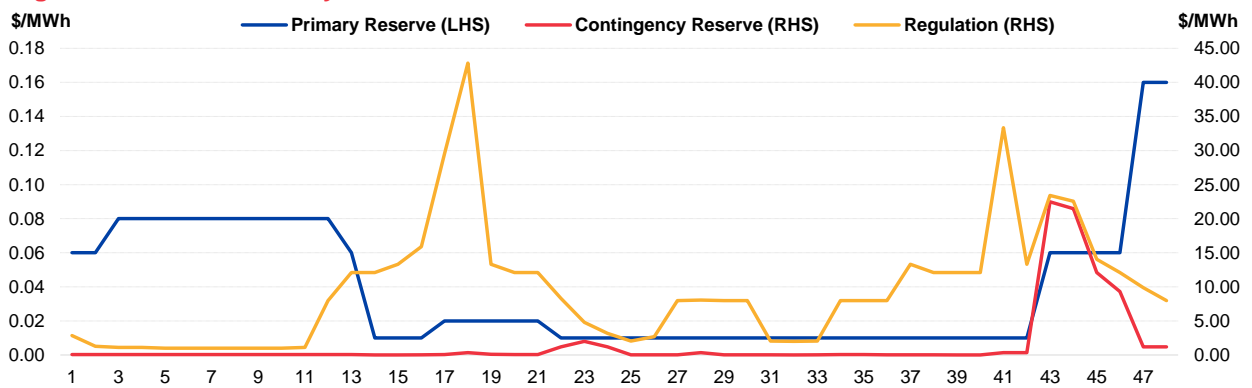
## 07 October 2021



**Figure 1: Forecasted Demand vs USEP**



**Figure 2: Periodic Ancillary Prices**



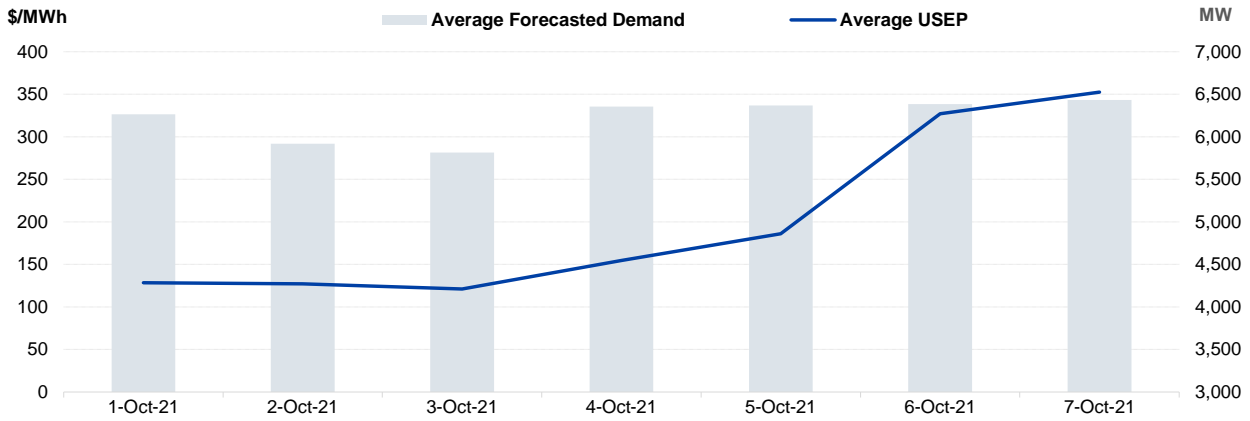
**Figure 3: Daily Data Comparison**

	Forecasted Demand (MW)	Total Supply (MW)	Energy Price (\$/MWh)
Weekday Ranking*	46 out of 4717	480 out of 4717	37 out of 4717
Daily Average	6,433	8,253	352.55
Previous day	6,386	8,154	327.19
Change (%)	0.7%	1.2%	7.8%
Daily Max	7,015	8,506	2039.38
Previous day	6,956	8,319	3007.35
Change (%)	0.9%	2.2%	-32.2%
Daily Min	5,440	7,762	151.11
Previous day	5,366	7,761	118.75
Change (%)	1.4%	0.0%	27.3%

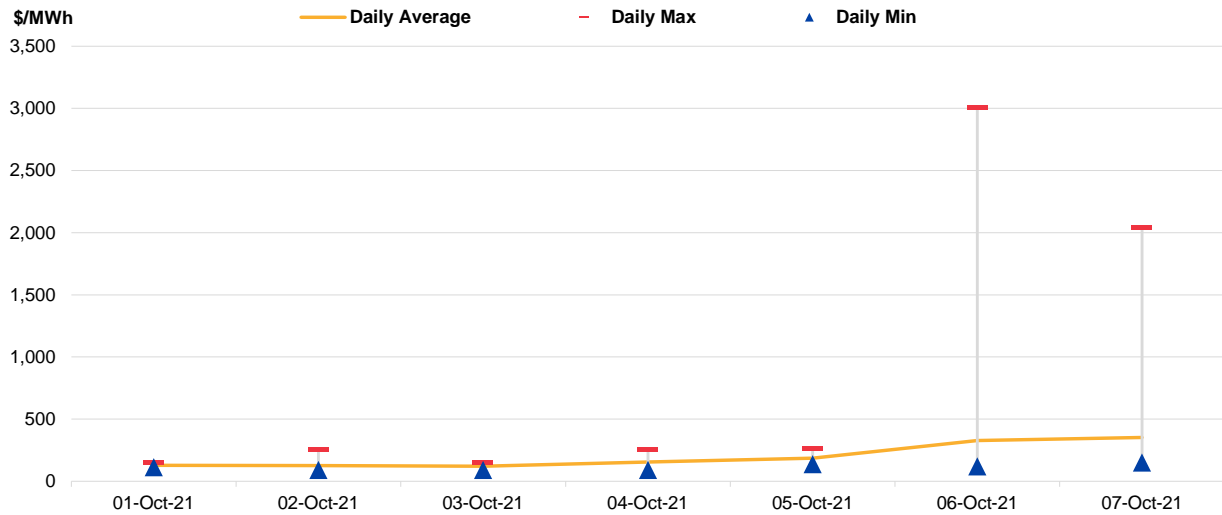
	Primary Reserve Price (\$/MWh)	Contingency Reserve Price (\$/MWh)	Regulation Price (\$/MWh)
Daily Average	0.04	1.56	9.46
Previous day	0.03	3.42	34.90
Change (%)	33.3%	-54.4%	-72.9%
Daily Max	0.16	22.48	42.83
Previous day	0.16	21.48	164.81
Change (%)	0.0%	4.7%	-74.0%
Daily Min	0.01	0.01	1.00
Previous day	0.01	0.01	0.01
Change (%)	0.0%	0.0%	9900.0%

\*Ranking denotes the relative position of the market parameter since 1 Jan 2003.

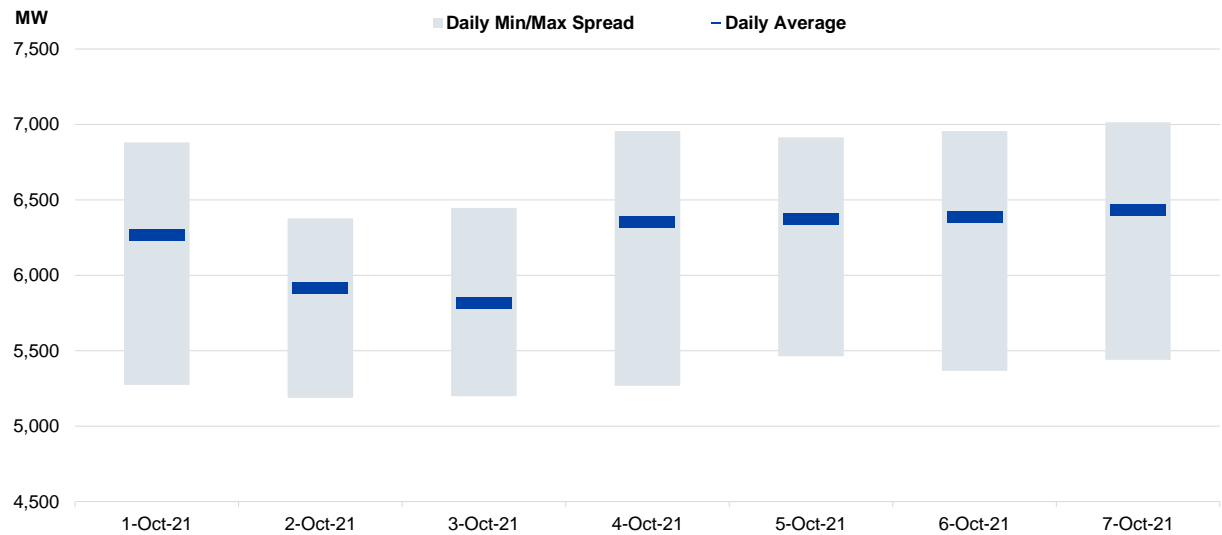
**Figure 4: Seven Days of Daily USEP vs Daily Forecasted Demand**



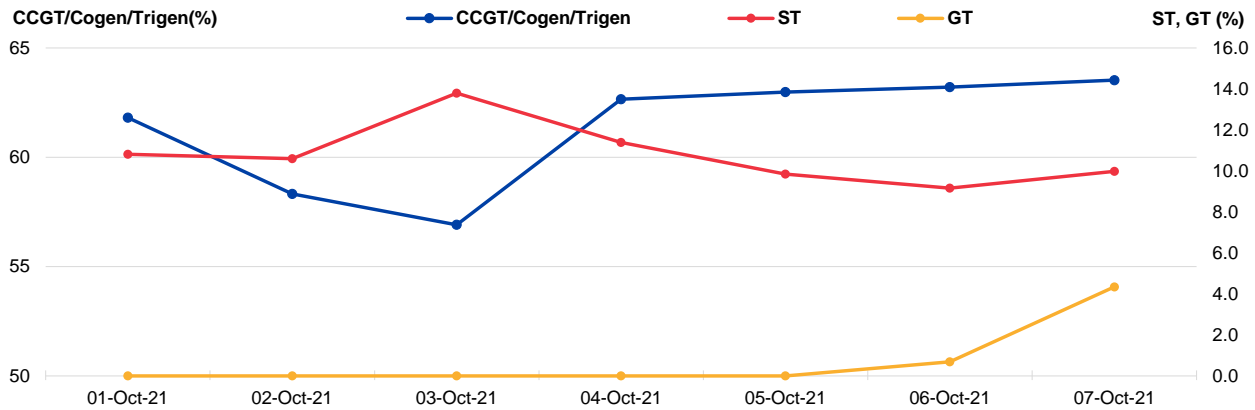
**Figure 5: Seven Days USEP Average-Max-Min**



**Figure 6: Seven Days Forecasted Demand Average-Max-Min**



**Figure 7: Daily Generation Plant Utilization Rate**



**Figure 8: Daily Trading Data Table**

	Fri 01-Oct-21	Sat 02-Oct-21	Sun 03-Oct-21	Mon 04-Oct-21	Tue 05-Oct-21	Wed 06-Oct-21	Thu 07-Oct-21
<b>Forecasted Demand (MW)</b>							
Daily Average	6,266	5,918	5,814	6,355	6,370	6,386	6,433
Daily Maximum	6,880	6,377	6,448	6,955	6,913	6,956	7,015
Daily Minimum	5,274	5,189	5,199	5,269	5,464	5,366	5,440
<b>Total Supply (MW)</b>							
Daily Average	8,197	7,854	7,783	8,225	8,158	8,154	8,253
Daily Maximum	8,712	7,936	7,948	8,573	8,324	8,319	8,506
Daily Minimum	7,639	7,741	7,591	7,818	7,774	7,761	7,762
<b>Energy Price (\$/MWh)</b>							
Daily Average	128.58	127.03	121.10	154.70	186.12	327.19	352.55
Daily Maximum	153.24	257.87	146.40	254.76	258.01	3007.35	2039.38
Daily Minimum	112.08	90.59	91.13	91.17	136.85	118.75	151.11
<b>Reserve &amp; Regulation Prices (\$/MWh)</b>							
Primary	0.33	0.21	1.08	0.09	0.02	0.03	0.04
Contingency	0.51	13.09	8.42	1.24	0.19	3.42	1.56
Regulation	4.22	15.25	9.50	3.28	16.74	34.90	9.46
<b>Reserve &amp; Regulation Requirement (MW)</b>							
Primary	174	195	190	166	166	171	162
Contingency	603	613	609	600	600	604	601
Regulation	114	114	114	114	114	114	114
<b>Generation (MW)</b>							
CCGT/Cogen/Trigen	6,171	5,823	5,682	6,256	6,288	6,311	6,343
ST	125	122	159	131	114	106	115
GT	0	0	0	0	0	1	8

# Periodic Trading Data

Figure 9: Periodic Trading Data Table

Period	USEP (\$/MWh)	Forecasted Demand (MW)	CCGT/Cogen/Trigen Generation (MW)	ST Generation (MW)	GT Generation (MW)
1	\$228.72	5,894	5,824	99	0
2	\$209.57	5,792	5,720	99	0
3	\$186.48	5,687	5,614	99	0
4	\$181.15	5,618	5,546	99	0
5	\$166.02	5,559	5,485	99	0
6	\$155.72	5,497	5,423	99	0
7	\$153.37	5,463	5,388	99	0
8	\$151.16	5,444	5,369	99	0
9	\$151.12	5,440	5,365	99	0
10	\$151.11	5,441	5,366	99	0
11	\$155.73	5,521	5,446	99	0
12	\$181.17	5,669	5,595	99	0
13	\$203.73	5,844	5,772	99	0
14	\$209.49	5,996	5,926	99	0
15	\$155.78	6,162	6,093	99	0
16	\$167.04	6,383	6,316	99	0
17	\$181.66	6,596	6,531	99	0
18	\$175.03	6,728	6,654	109	0
19	\$181.66	6,809	6,731	114	0
20	\$187.25	6,877	6,795	119	0
21	\$224.02	6,940	6,854	124	0
22	\$224.04	6,986	6,900	124	0
23	\$2,039.36	6,996	6,905	129	0
24	\$209.71	6,934	6,823	149	0
25	\$181.55	6,871	6,759	149	0
26	\$186.64	6,882	6,770	149	0
27	\$298.92	6,978	6,867	149	0
28	\$542.96	6,989	6,878	149	0
29	\$312.09	6,937	6,831	144	0
30	\$1,009.12	6,956	6,809	139	46
31	\$2,039.38	6,916	6,814	139	0
32	\$410.45	6,923	6,827	134	0
33	\$503.80	6,967	6,841	129	36
34	\$504.78	7,015	6,878	124	51
35	\$542.73	6,961	6,885	114	0
36	\$224.03	6,863	6,785	114	0
37	\$224.02	6,819	6,742	114	0
38	\$298.95	6,845	6,768	114	0
39	\$311.76	6,875	6,769	114	30
40	\$504.50	6,879	6,767	114	36
41	\$542.60	6,849	6,668	114	105
42	\$504.74	6,781	6,633	114	71
43	\$463.85	6,709	6,632	114	0
44	\$281.44	6,574	6,495	114	0
45	\$226.33	6,423	6,342	114	0
46	\$209.03	6,301	6,220	114	0
47	\$187.19	6,176	6,093	114	0
48	\$181.40	6,016	5,932	114	0

**Disclaimer**

This Report is prepared and provided for general information purposes only. Information in this Report was obtained or derived from sources that the Energy Market Company Pte Ltd (EMC) considers reliable. All reasonable care has been taken to ensure that stated facts are accurate and opinions fair and reasonable at time of printing. EMC does not represent that information in this Report is accurate or complete and it should not be relied upon as such. In particular, in presentation of charts, certain assumptions were made which may not be stated therein. As such, EMC assumes no fiduciary responsibility or liability for any construction or interpretation you may take based on the information contained nor for any consequences, financial or otherwise, from transactions where information in this Report may be relied upon. You should make your own appraisal and should consult, to the extent necessary, your own professional advisors to ensure that any decision made based on the information in this Report is suitable for your circumstances. If you have any specific queries about this Report or its contents, you should contact us at [marketoperations-B@emcsg.com](mailto:marketoperations-B@emcsg.com).