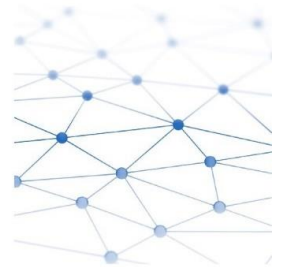
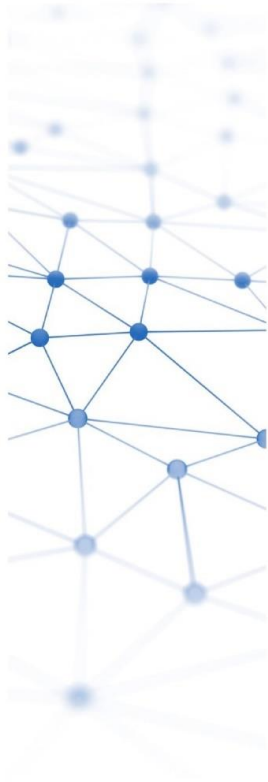
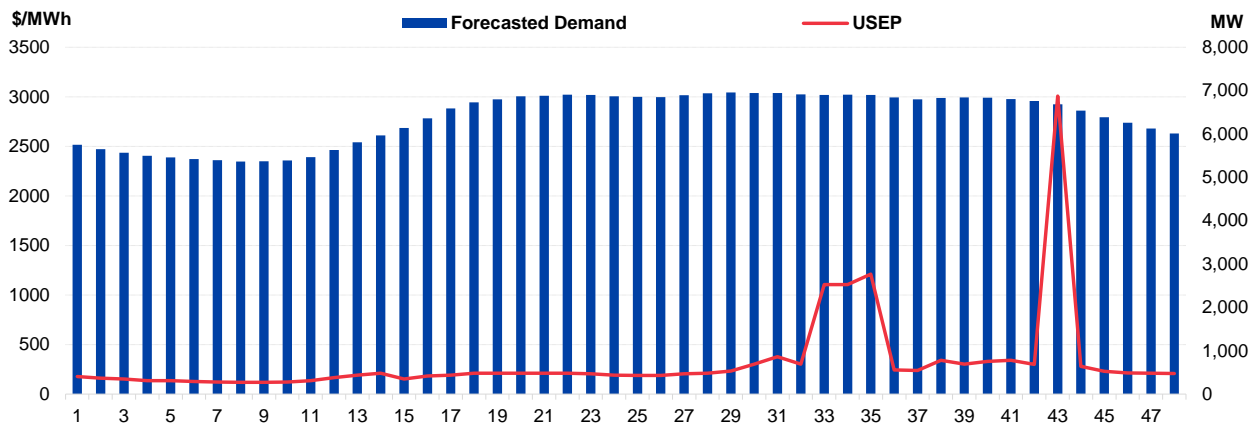


# Daily Trading Report

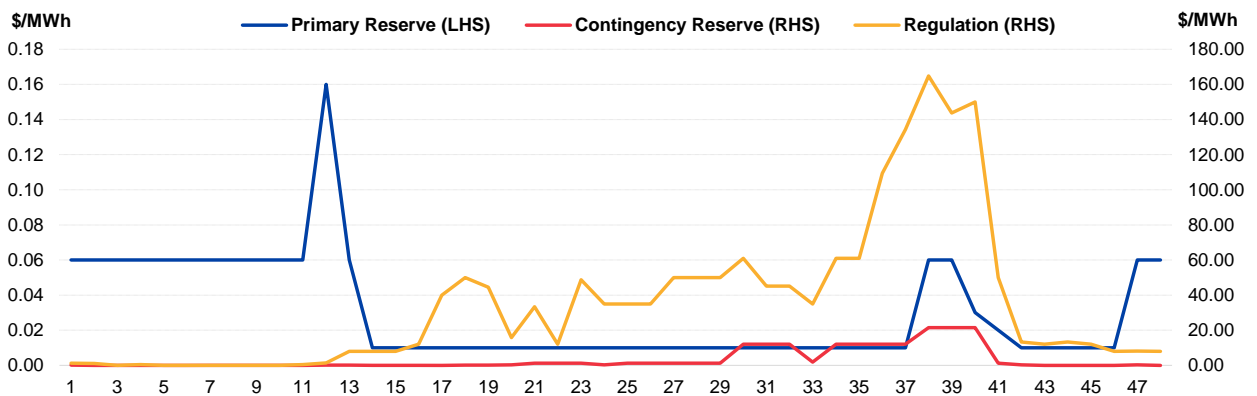
## 06 October 2021



**Figure 1: Forecasted Demand vs USEP**



**Figure 2: Periodic Ancillary Prices**



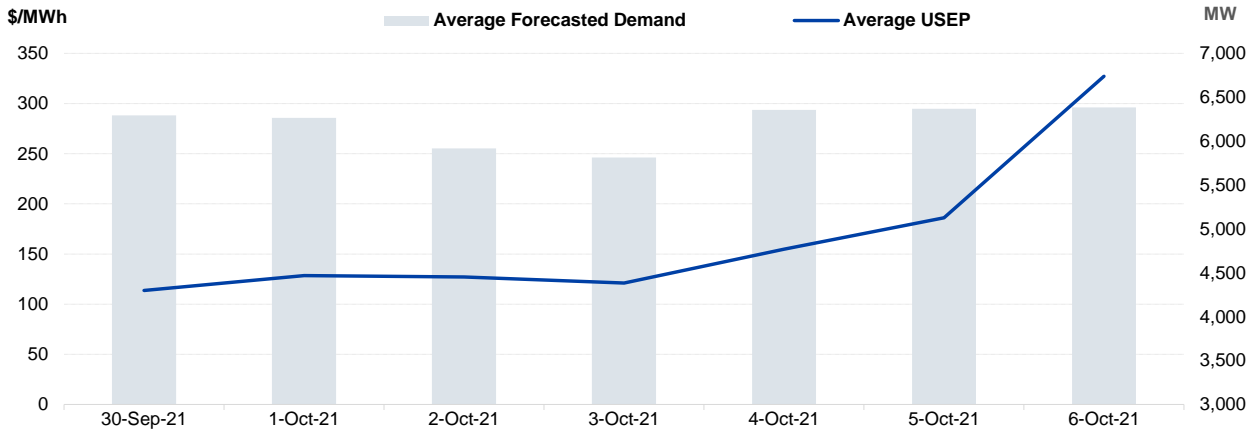
**Figure 3: Daily Data Comparison**

	Forecasted Demand (MW)	Total Supply (MW)	Energy Price (\$/MWh)
Weekday Ranking*	88 out of 4716	743 out of 4716	47 out of 4716
Daily Average	6,386	8,154	327.19
Previous day	6,370	8,158	186.12
Change (%)	0.3%	0.0%	75.8%
Daily Max	6,956	8,319	3007.35
Previous day	6,913	8,324	258.01
Change (%)	0.6%	-0.1%	1065.6%
Daily Min	5,366	7,761	118.75
Previous day	5,464	7,774	136.85
Change (%)	-1.8%	-0.2%	-13.2%

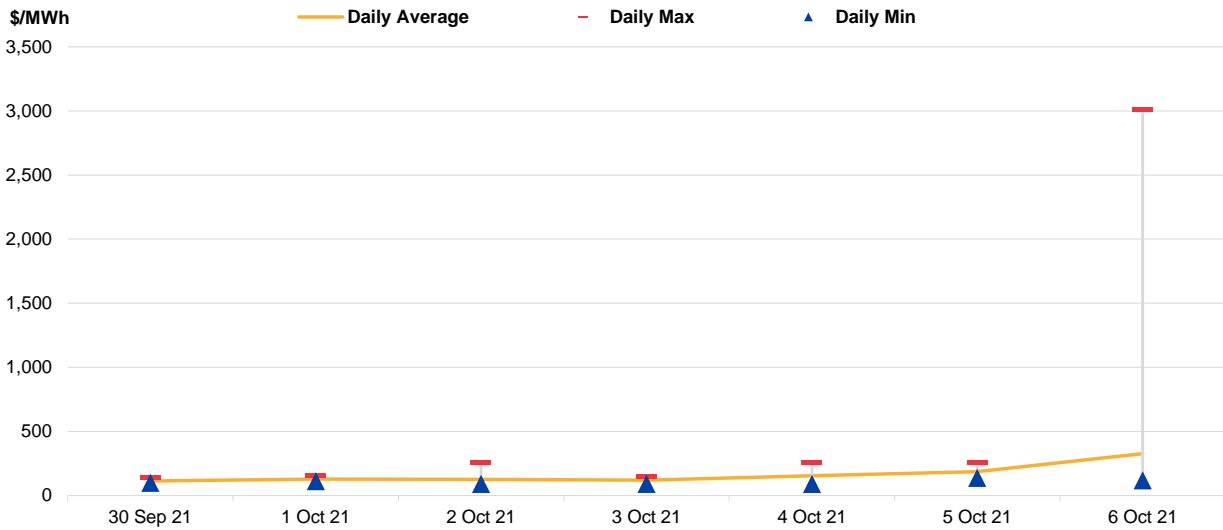
	Primary Reserve Price (\$/MWh)	Contingency Reserve Price (\$/MWh)	Regulation Price (\$/MWh)
Daily Average	0.03	3.42	34.90
Previous day	0.02	0.19	16.74
Change (%)	50.0%	1708.2%	108.5%
Daily Max	0.16	21.48	164.81
Previous day	0.06	1.20	179.99
Change (%)	166.7%	1690.0%	-8.4%
Daily Min	0.01	0.01	0.01
Previous day	0.01	0.01	0.01
Change (%)	0.0%	0.0%	0.0%

\*Ranking denotes the relative position of the market parameter since 1 Jan 2003.

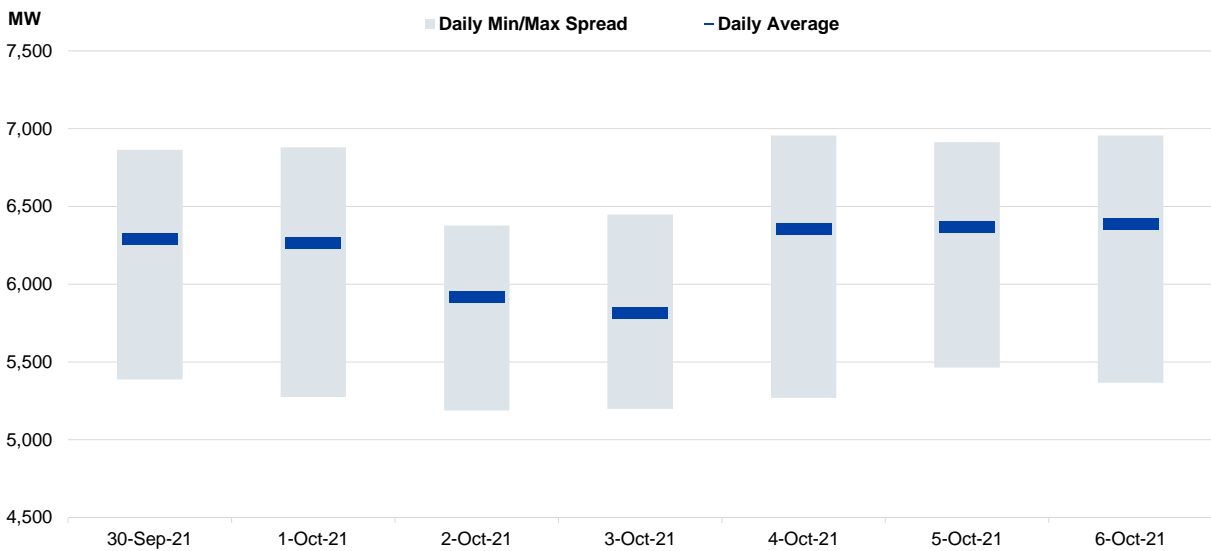
**Figure 4: Seven Days of Daily USEP vs Daily Forecasted Demand**



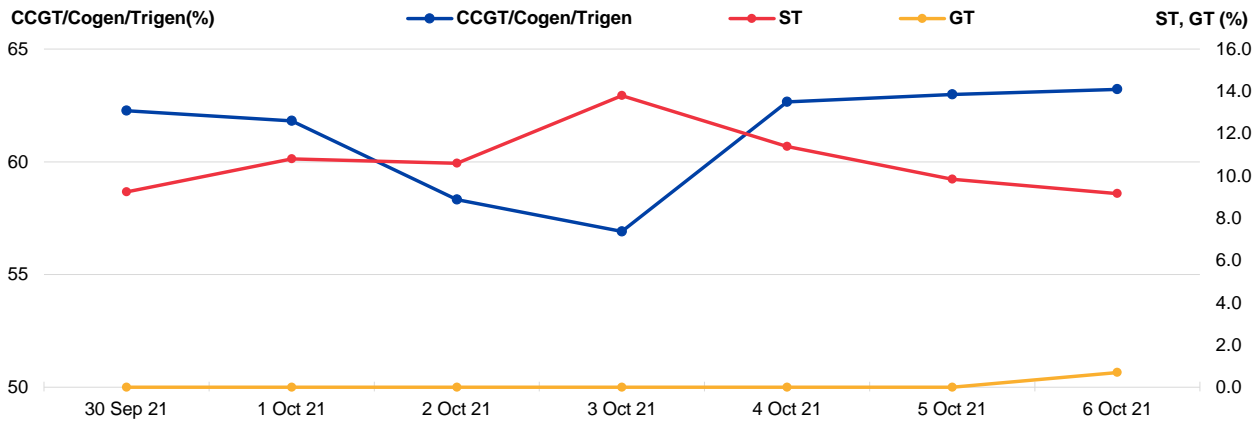
**Figure 5: Seven Days USEP Average-Max-Min**



**Figure 6: Seven Days Forecasted Demand Average-Max-Min**



**Figure 7: Daily Generation Plant Utilization Rate**



**Figure 8: Daily Trading Data Table**

	Thu 30 Sep 21	Fri 1 Oct 21	Sat 2 Oct 21	Sun 3 Oct 21	Mon 4 Oct 21	Tue 5 Oct 21	Wed 6 Oct 21
<b>Forecasted Demand (MW)</b>							
Daily Average	6,293	6,266	5,918	5,814	6,355	6,370	6,386
Daily Maximum	6,864	6,880	6,377	6,448	6,955	6,913	6,956
Daily Minimum	5,388	5,274	5,189	5,199	5,269	5,464	5,366
<b>Total Supply (MW)</b>							
Daily Average	8,063	8,197	7,854	7,783	8,225	8,158	8,154
Daily Maximum	8,208	8,712	7,936	7,948	8,573	8,324	8,319
Daily Minimum	7,722	7,639	7,741	7,591	7,818	7,774	7,761
<b>Energy Price (\$/MWh)</b>							
Daily Average	113.64	128.58	127.03	121.10	154.70	186.12	327.19
Daily Maximum	137.68	153.24	257.87	146.40	254.76	258.01	3007.35
Daily Minimum	98.53	112.08	90.59	91.13	91.17	136.85	118.75
<b>Reserve &amp; Regulation Prices (\$/MWh)</b>							
Primary	1.22	0.33	0.21	1.08	0.09	0.02	0.03
Contingency	3.13	0.51	13.09	8.42	1.24	0.19	3.42
Regulation	3.78	4.22	15.25	9.50	3.28	16.74	34.90
<b>Reserve &amp; Regulation Requirement (MW)</b>							
Primary	181	174	195	190	166	166	171
Contingency	615	603	613	609	600	600	604
Regulation	114	114	114	114	114	114	114
<b>Generation (MW)</b>							
CCGT/Cogen/Trigen	6,217	6,171	5,823	5,682	6,256	6,288	6,311
ST	107	125	122	159	131	114	106
GT	0	0	0	0	0	0	1

# Periodic Trading Data

Figure 9: Periodic Trading Data Table

Period	USEP (\$/MWh)	Forecasted Demand (MW)	CCGT/Cogen/Trigen Generation (MW)	ST Generation (MW)	GT Generation (MW)
1	\$176.47	5,748	5,677	99	0
2	\$161.54	5,648	5,575	99	0
3	\$151.14	5,568	5,495	99	0
4	\$135.97	5,500	5,426	99	0
5	\$134.22	5,458	5,383	99	0
6	\$128.44	5,424	5,349	99	0
7	\$122.52	5,396	5,320	99	0
8	\$118.75	5,366	5,290	99	0
9	\$118.75	5,369	5,293	99	0
10	\$122.50	5,391	5,315	99	0
11	\$134.19	5,464	5,389	99	0
12	\$166.04	5,634	5,560	99	0
13	\$191.95	5,806	5,735	99	0
14	\$209.48	5,966	5,895	99	0
15	\$151.22	6,136	6,067	99	0
16	\$181.63	6,362	6,295	99	0
17	\$192.11	6,590	6,525	99	0
18	\$209.74	6,726	6,663	99	0
19	\$209.84	6,798	6,735	99	0
20	\$209.85	6,868	6,800	104	0
21	\$209.09	6,884	6,812	109	0
22	\$209.08	6,906	6,829	114	0
23	\$205.06	6,899	6,818	119	0
24	\$192.34	6,867	6,780	124	0
25	\$187.25	6,856	6,764	129	0
26	\$187.06	6,850	6,753	134	0
27	\$205.03	6,896	6,799	134	0
28	\$209.91	6,936	6,841	134	0
29	\$233.16	6,956	6,860	134	0
30	\$301.05	6,946	6,855	129	0
31	\$377.06	6,944	6,858	124	0
32	\$301.05	6,916	6,835	119	0
33	\$1,103.84	6,903	6,827	114	0
34	\$1,103.88	6,906	6,835	109	0
35	\$1,210.81	6,900	6,838	99	0
36	\$245.04	6,842	6,780	99	0
37	\$237.41	6,801	6,738	99	0
38	\$340.79	6,831	6,769	99	0
39	\$300.90	6,841	6,749	99	30
40	\$330.02	6,836	6,745	99	30
41	\$341.00	6,807	6,745	99	0
42	\$300.58	6,760	6,698	99	0
43	\$3,007.35	6,684	6,622	99	0
44	\$279.65	6,540	6,477	99	0
45	\$229.05	6,387	6,322	99	0
46	\$212.23	6,257	6,191	99	0
47	\$209.85	6,128	6,061	99	0
48	\$209.01	6,011	5,942	99	0

**Disclaimer**

This Report is prepared and provided for general information purposes only. Information in this Report was obtained or derived from sources that the Energy Market Company Pte Ltd (EMC) considers reliable. All reasonable care has been taken to ensure that stated facts are accurate and opinions fair and reasonable at time of printing. EMC does not represent that information in this Report is accurate or complete and it should not be relied upon as such. In particular, in presentation of charts, certain assumptions were made which may not be stated therein. As such, EMC assumes no fiduciary responsibility or liability for any construction or interpretation you may take based on the information contained nor for any consequences, financial or otherwise, from transactions where information in this Report may be relied upon. You should make your own appraisal and should consult, to the extent necessary, your own professional advisors to ensure that any decision made based on the information in this Report is suitable for your circumstances.

If you have any specific queries about this Report or its contents, you should contact us at [marketoperations-B@emcsg.com](mailto:marketoperations-B@emcsg.com).