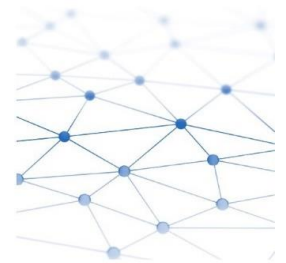
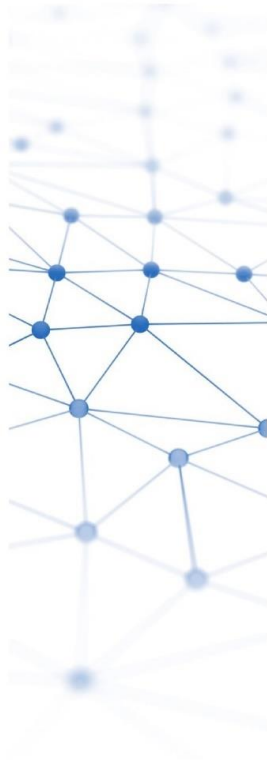
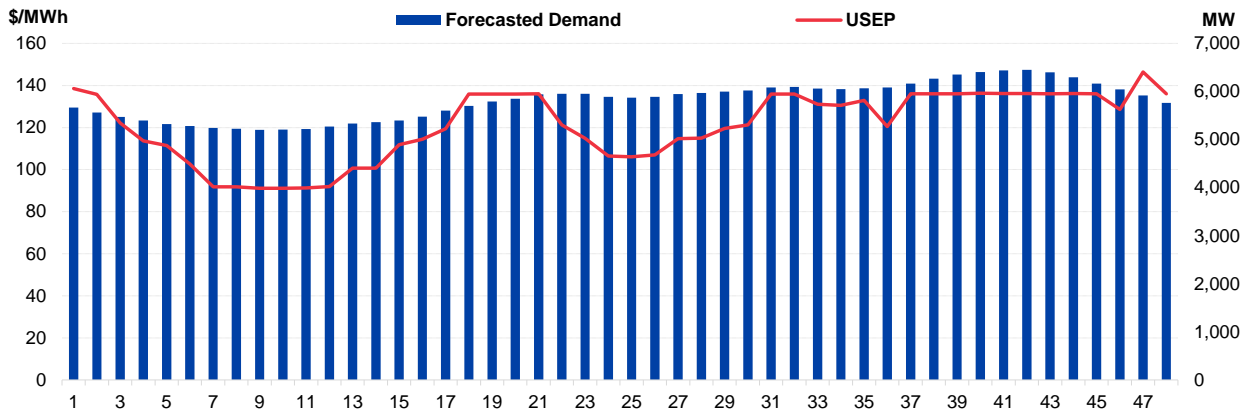


# Daily Trading Report

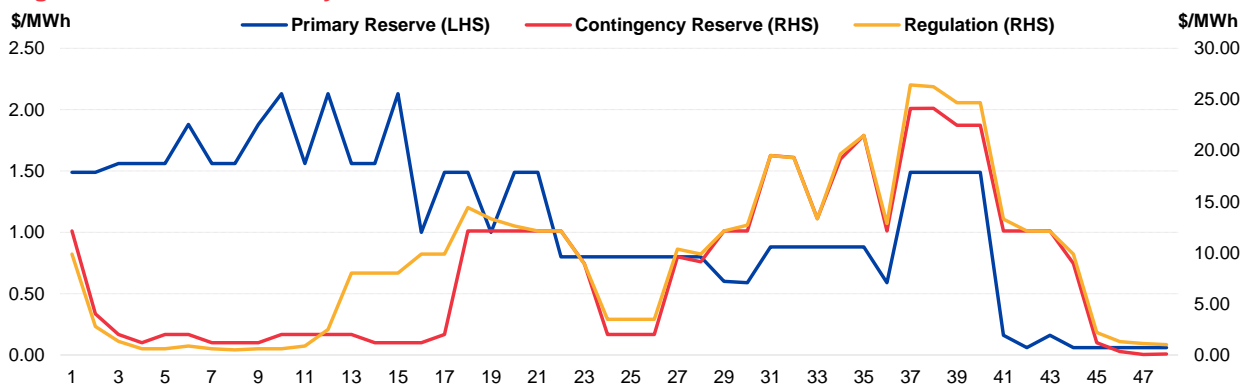
## 03 October 2021



**Figure 1: Forecasted Demand vs USEP**



**Figure 2: Periodic Ancillary Prices**



**Figure 3: Daily Data Comparison**

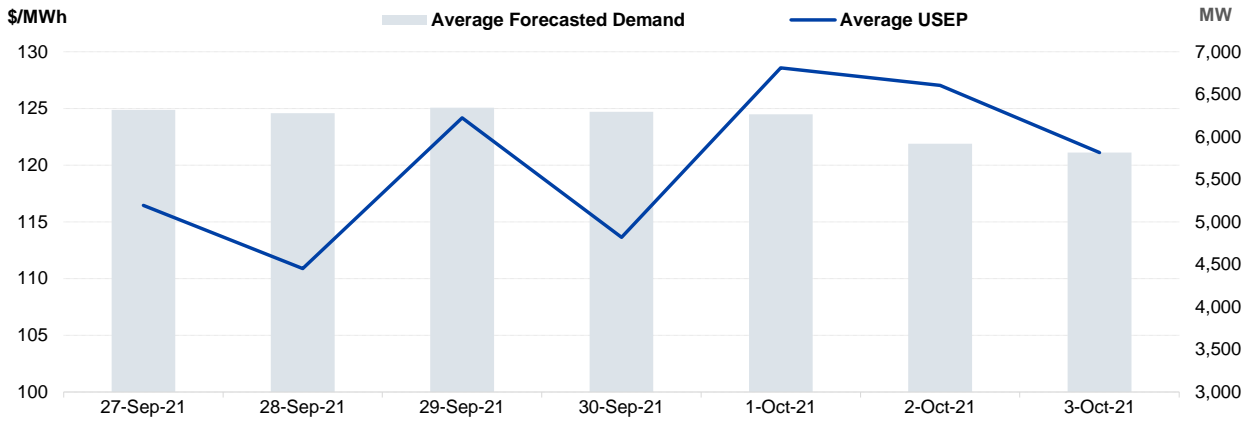
	Forecasted Demand (MW)	Total Supply (MW)	Energy Price (\$/MWh)
PHDay Ranking*	30 out of 1185	136 out of 1185	486 out of 1185
Daily Average	5,814	7,783	121.10
Previous day	5,918	7,854	127.03
Change (%)	-1.7%	-0.9%	-4.7%
Daily Max	6,448	7,948	146.40
Previous day	6,377	7,936	257.87
Change (%)	1.1%	0.2%	-43.2%
Daily Min	5,199	7,591	91.13
Previous day	5,189	7,741	90.59
Change (%)	0.2%	-1.9%	0.6%

	Primary Reserve Price (\$/MWh)	Contingency Reserve Price (\$/MWh)	Regulation Price (\$/MWh)
Daily Average	1.08	8.42	9.50
Previous day	0.21	13.09	15.25
Change (%)	414.3%	-35.7%	-37.7%
Daily Max	2.13	24.13	26.42
Previous day	1.56	131.62	130.88
Change (%)	36.5%	-81.7%	-79.8%
Daily Min	0.06	0.05	0.50
Previous day	0.02	0.01	0.01
Change (%)	200.0%	400.0%	4900.0%

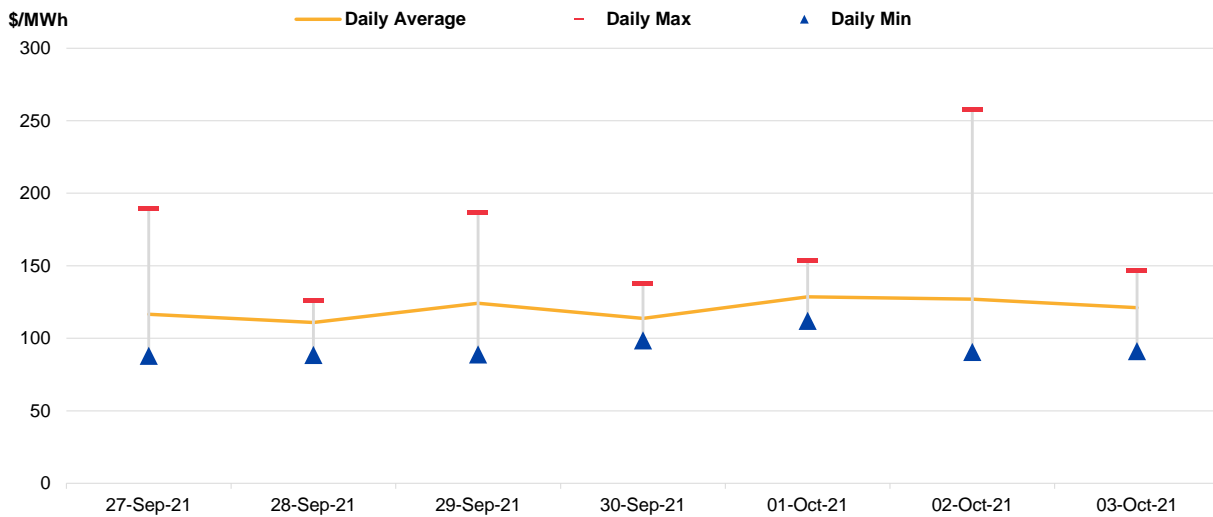
\*Ranking denotes the relative position of the market parameter since 1 Jan 2003.

# Market Overview

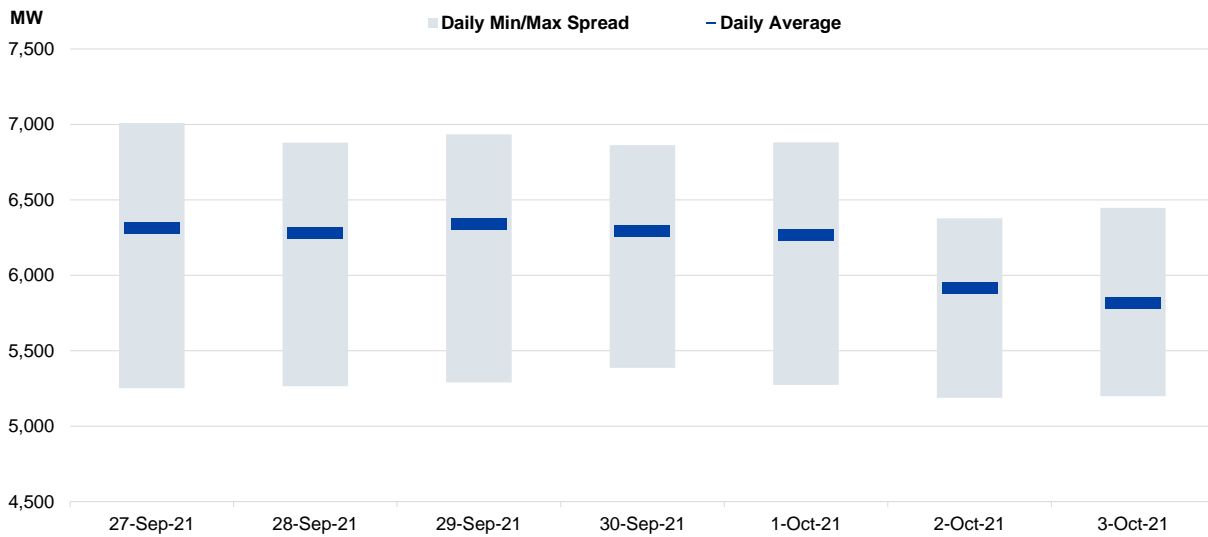
**Figure 4: Seven Days of Daily USEP vs Daily Forecasted Demand**



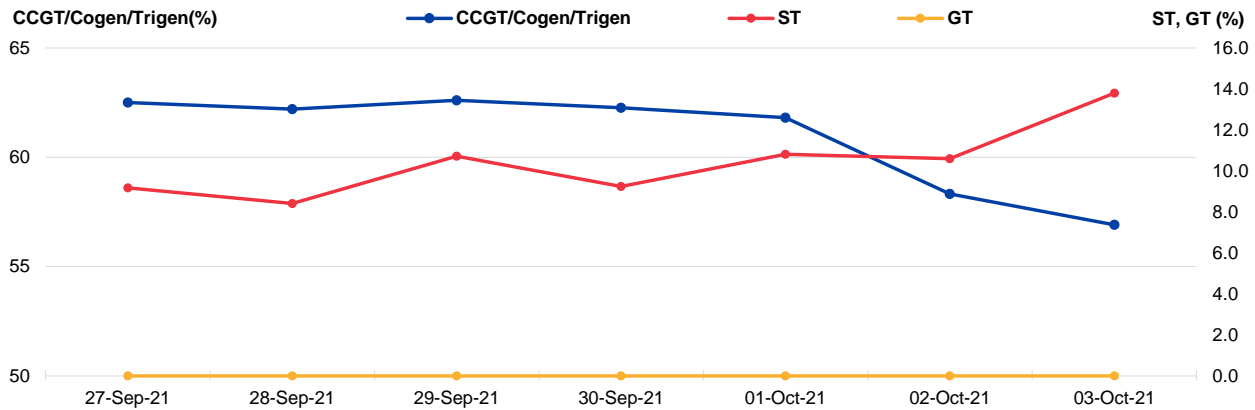
**Figure 5: Seven Days USEP Average-Max-Min**



**Figure 6: Seven Days Forecasted Demand Average-Max-Min**



**Figure 7: Daily Generation Plant Utilization Rate**



**Figure 8: Daily Trading Data Table**

	Mon 27-Sep-21	Tue 28-Sep-21	Wed 29-Sep-21	Thu 30-Sep-21	Fri 01-Oct-21	Sat 02-Oct-21	Sun 03-Oct-21
<b>Forecasted Demand (MW)</b>							
Daily Average	6,315	6,276	6,343	6,293	6,266	5,918	5,814
Daily Maximum	7,009	6,879	6,934	6,864	6,880	6,377	6,448
Daily Minimum	5,251	5,264	5,290	5,388	5,274	5,189	5,199
<b>Total Supply (MW)</b>							
Daily Average	8,052	8,034	8,026	8,063	8,197	7,854	7,783
Daily Maximum	8,237	8,402	8,328	8,208	8,712	7,936	7,948
Daily Minimum	7,724	7,669	7,664	7,722	7,639	7,741	7,591
<b>Energy Price (\$/MWh)</b>							
Daily Average	116.46	110.88	124.16	113.64	128.58	127.03	121.10
Daily Maximum	189.23	125.94	186.62	137.68	153.24	257.87	146.40
Daily Minimum	87.80	88.50	88.82	98.53	112.08	90.59	91.13
<b>Reserve &amp; Regulation Prices (\$/MWh)</b>							
Primary	1.14	1.29	0.85	1.22	0.33	0.21	1.08
Contingency	4.04	7.47	7.87	3.13	0.51	13.09	8.42
Regulation	5.68	7.41	7.96	3.78	4.22	15.25	9.50
<b>Reserve &amp; Regulation Requirement (MW)</b>							
Primary	183	182	177	181	174	195	190
Contingency	615	614	611	615	603	613	609
Regulation	114	114	114	114	114	114	114
<b>Generation (MW)</b>							
CCGT/Cogen/Trigen	6,240	6,210	6,251	6,217	6,171	5,823	5,682
ST	106	97	124	107	125	122	159
GT	0	0	0	0	0	0	0

# Periodic Trading Data

Figure 9: Periodic Trading Data Table

Period	USEP (\$/MWh)	Forecasted Demand (MW)	CCGT/Cogen/Trigen Generation (MW)	ST Generation (MW)	GT Generation (MW)
1	\$138.57	5,666	5,553	139	0
2	\$135.80	5,560	5,446	139	0
3	\$122.14	5,469	5,354	139	0
4	\$113.72	5,396	5,281	139	0
5	\$111.38	5,322	5,205	139	0
6	\$102.65	5,279	5,163	139	0
7	\$91.79	5,240	5,123	139	0
8	\$91.80	5,225	5,108	139	0
9	\$91.13	5,199	5,082	139	0
10	\$91.13	5,207	5,089	139	0
11	\$91.22	5,220	5,103	139	0
12	\$91.90	5,269	5,152	139	0
13	\$100.73	5,333	5,216	139	0
14	\$100.74	5,362	5,245	139	0
15	\$111.86	5,396	5,280	139	0
16	\$114.51	5,478	5,363	139	0
17	\$119.42	5,602	5,488	139	0
18	\$135.85	5,700	5,587	139	0
19	\$135.93	5,791	5,678	139	0
20	\$135.94	5,848	5,736	139	0
21	\$135.99	5,938	5,827	139	0
22	\$121.27	5,949	5,825	153	0
23	\$114.80	5,949	5,794	183	0
24	\$106.49	5,890	5,704	215	0
25	\$106.02	5,873	5,686	215	0
26	\$106.96	5,889	5,708	209	0
27	\$114.70	5,946	5,766	209	0
28	\$114.91	5,970	5,790	209	0
29	\$119.59	5,995	5,815	209	0
30	\$121.29	6,022	5,843	209	0
31	\$135.88	6,085	5,906	209	0
32	\$135.88	6,097	5,918	209	0
33	\$131.13	6,060	5,881	209	0
34	\$130.57	6,050	5,871	209	0
35	\$132.93	6,069	5,890	209	0
36	\$120.43	6,086	5,920	195	0
37	\$135.99	6,163	6,028	165	0
38	\$136.06	6,265	6,157	139	0
39	\$136.06	6,354	6,248	139	0
40	\$136.27	6,405	6,299	139	0
41	\$136.12	6,438	6,332	139	0
42	\$136.13	6,448	6,342	139	0
43	\$136.06	6,399	6,293	139	0
44	\$136.14	6,294	6,187	139	0
45	\$135.99	6,161	6,053	139	0
46	\$128.62	6,045	5,936	139	0
47	\$146.40	5,919	5,809	139	0
48	\$135.98	5,764	5,652	139	0

**Disclaimer**

This Report is prepared and provided for general information purposes only. Information in this Report was obtained or derived from sources that the Energy Market Company Pte Ltd (EMC) considers reliable. All reasonable care has been taken to ensure that stated facts are accurate and opinions fair and reasonable at time of printing. EMC does not represent that information in this Report is accurate or complete and it should not be relied upon as such. In particular, in presentation of charts, certain assumptions were made which may not be stated therein. As such, EMC assumes no fiduciary responsibility or liability for any construction or interpretation you may take based on the information contained nor for any consequences, financial or otherwise, from transactions where information in this Report may be relied upon. You should make your own appraisal and should consult, to the extent necessary, your own professional advisors to ensure that any decision made based on the information in this Report is suitable for your circumstances. If you have any specific queries about this Report or its contents, you should contact us at [marketoperations-B@emcsg.com](mailto:marketoperations-B@emcsg.com).