

Daily Trading Report

01 October 2021

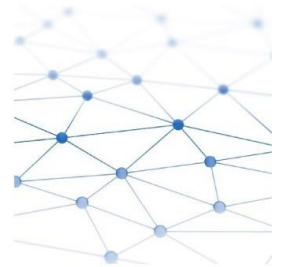
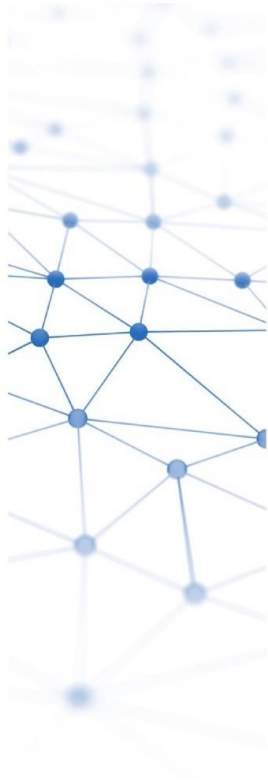


Figure 1: Forecasted Demand vs USEP

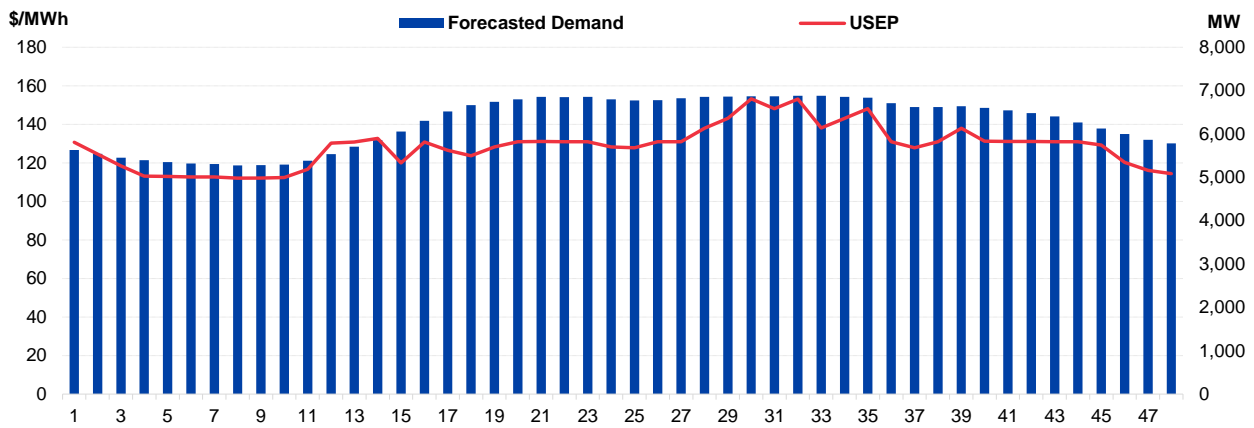


Figure 2: Periodic Ancillary Prices

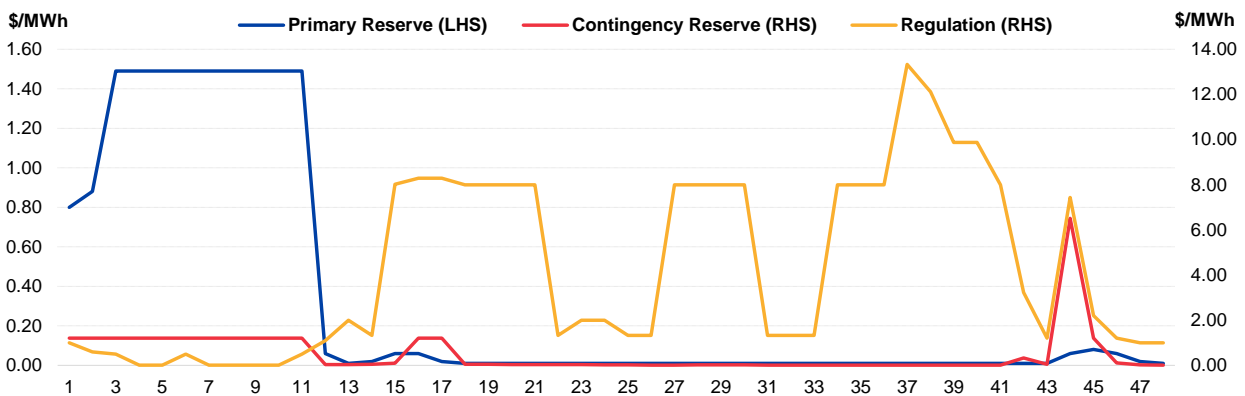


Figure 3: Daily Data Comparison

	Forecasted Demand (MW)	Total Supply (MW)	Energy Price (\$/MWh)
Weekday Ranking*	219 out of 4713	627 out of 4713	1905 out of 4713
Daily Average	6,266	8,197	128.58
Previous day	6,293	8,063	113.64
Change (%)	-0.4%	1.7%	13.1%
Daily Max	6,880	8,712	153.24
Previous day	6,864	8,208	137.68
Change (%)	0.2%	6.1%	11.3%
Daily Min	5,274	7,639	112.08
Previous day	5,388	7,722	98.53
Change (%)	-2.1%	-1.1%	13.8%

	Primary Reserve Price (\$/MWh)	Contingency Reserve Price (\$/MWh)	Regulation Price (\$/MWh)
Daily Average	0.33	0.51	4.22
Previous day	1.22	3.13	3.78
Change (%)	-73.0%	-83.6%	11.6%
Daily Max	1.49	6.51	13.33
Previous day	7.05	12.12	13.91
Change (%)	-78.9%	-46.3%	-4.2%
Daily Min	0.01	0.01	0.01
Previous day	0.06	0.33	0.01
Change (%)	-83.3%	-97.0%	0.0%

*Ranking denotes the relative position of the market parameter since 1 Jan 2003.

Figure 4: Seven Days of Daily USEP vs Daily Forecasted Demand

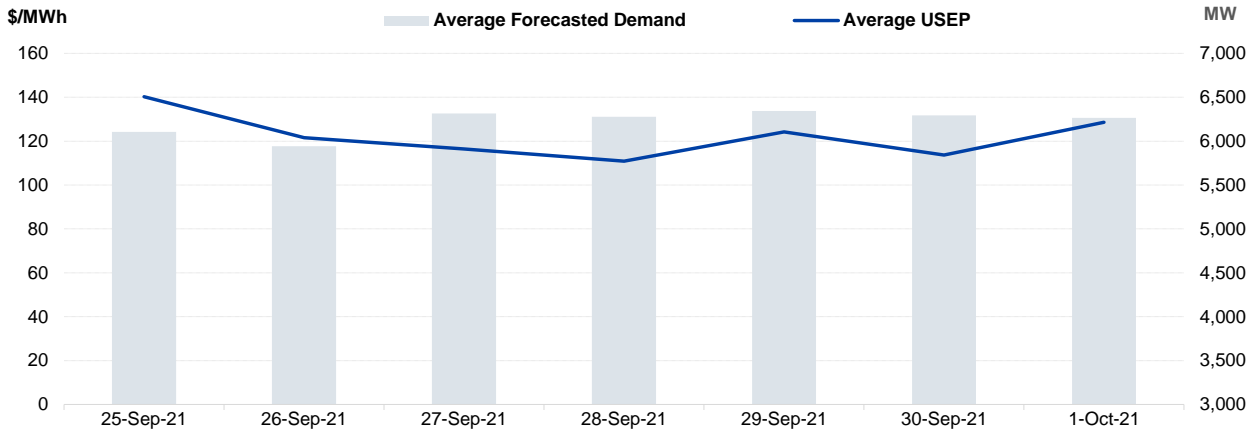


Figure 5: Seven Days USEP Average-Max-Min

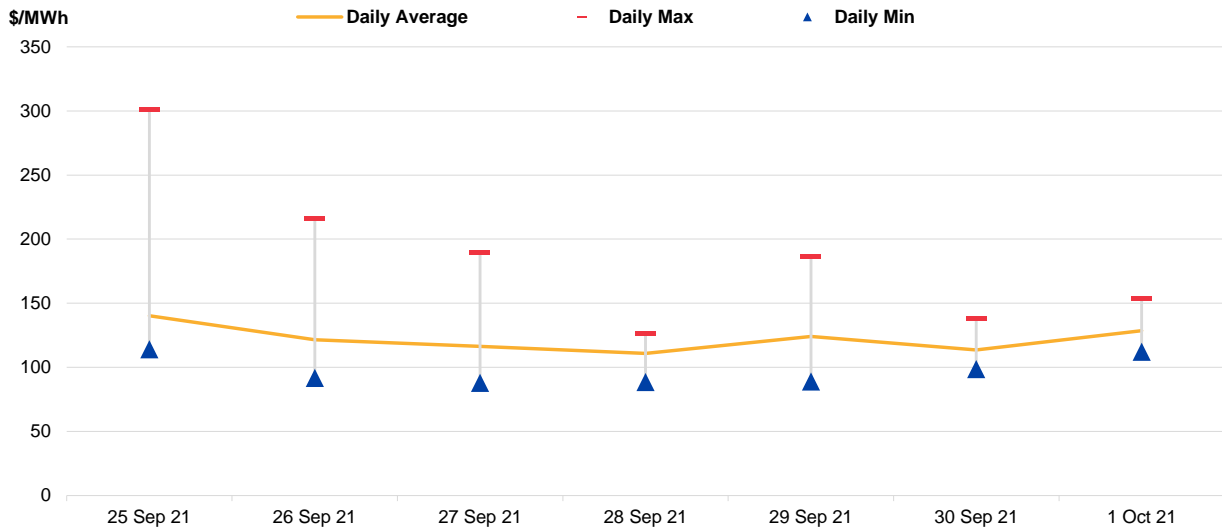


Figure 6: Seven Days Forecasted Demand Average-Max-Min

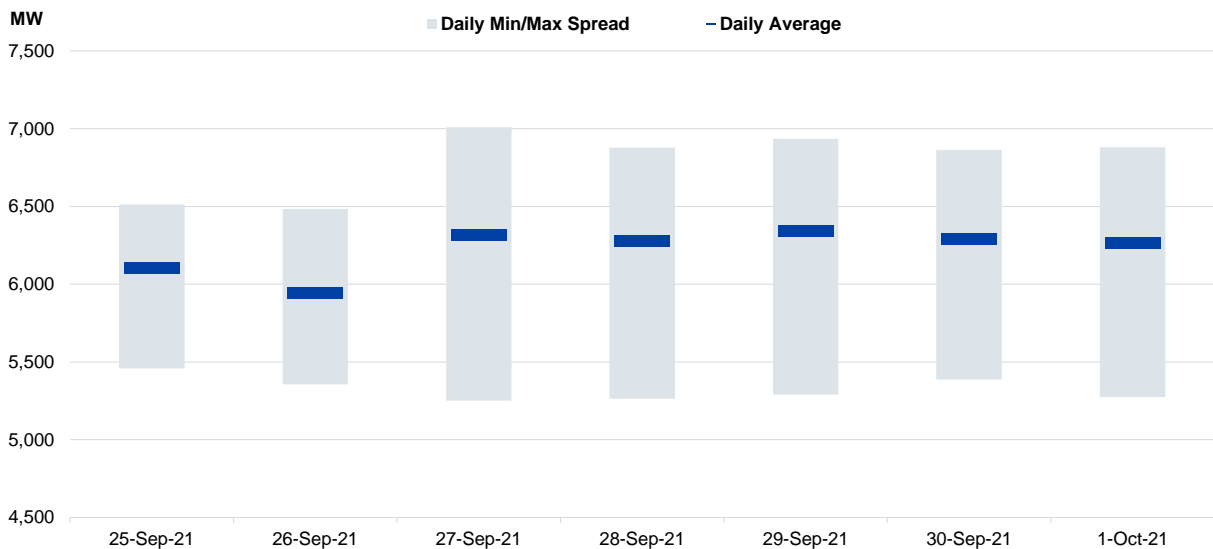


Figure 7: Daily Generation Plant Utilization Rate

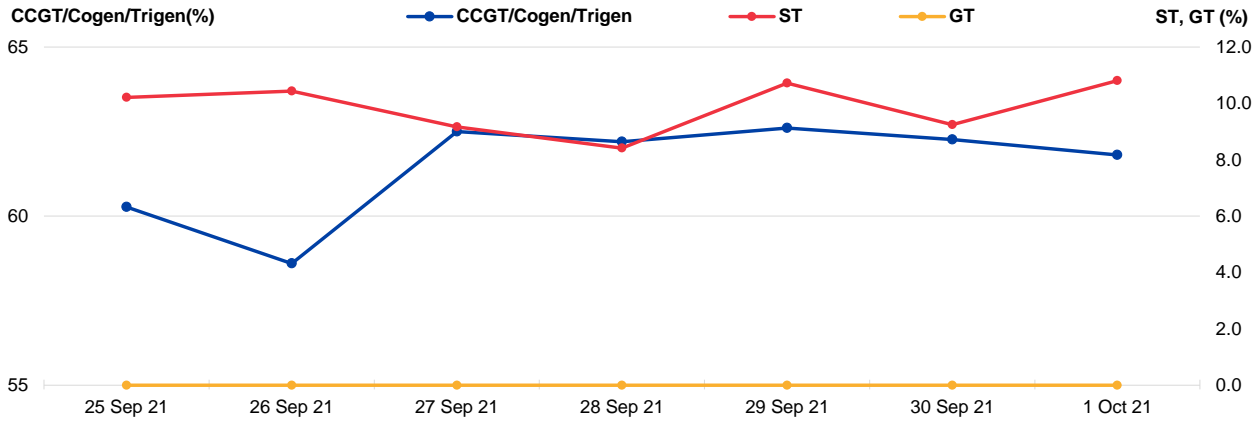


Figure 8: Daily Trading Data Table

	Sat 25 Sep 21	Sun 26 Sep 21	Mon 27 Sep 21	Tue 28 Sep 21	Wed 29 Sep 21	Thu 30 Sep 21	Fri 1 Oct 21
Forecasted Demand (MW)							
Daily Average	6,106	5,943	6,315	6,276	6,343	6,293	6,266
Daily Maximum	6,512	6,483	7,009	6,879	6,934	6,864	6,880
Daily Minimum	5,458	5,356	5,251	5,264	5,290	5,388	5,274
Total Supply (MW)							
Daily Average	8,024	7,928	8,052	8,034	8,026	8,063	8,197
Daily Maximum	8,120	8,100	8,237	8,402	8,328	8,208	8,712
Daily Minimum	7,839	7,706	7,724	7,669	7,664	7,722	7,639
Energy Price (\$/MWh)							
Daily Average	140.25	121.55	116.46	110.88	124.16	113.64	128.58
Daily Maximum	301.26	216.15	189.23	125.94	186.62	137.68	153.24
Daily Minimum	114.01	91.71	87.80	88.50	88.82	98.53	112.08
Reserve & Regulation Prices (\$/MWh)							
Primary	0.81	1.84	1.14	1.29	0.85	1.22	0.33
Contingency	7.52	13.85	4.04	7.47	7.87	3.13	0.51
Regulation	7.79	14.76	5.68	7.41	7.96	3.78	4.22
Reserve & Regulation Requirement (MW)							
Primary	190	190	183	182	177	181	174
Contingency	616	616	615	614	611	615	603
Regulation	114	114	114	114	114	114	114
Generation (MW)							
CCGT/Cogen/Trigen	6,017	5,850	6,240	6,210	6,251	6,217	6,171
ST	118	120	106	97	124	107	125
GT	0	0	0	0	0	0	0

Periodic Trading Data

Figure 9: Periodic Trading Data Table

Period	USEP (\$/MWh)	Forecasted Demand (MW)	CCGT/Cogen/Trigen Generation (MW)	ST Generation (MW)	GT Generation (MW)
1	\$130.70	5,632	5,543	114	0
2	\$124.54	5,540	5,451	114	0
3	\$118.41	5,451	5,361	114	0
4	\$113.14	5,394	5,303	114	0
5	\$112.96	5,352	5,260	114	0
6	\$112.73	5,322	5,230	114	0
7	\$112.63	5,305	5,213	114	0
8	\$112.08	5,274	5,182	114	0
9	\$112.10	5,284	5,192	114	0
10	\$112.38	5,296	5,204	114	0
11	\$116.70	5,385	5,293	114	0
12	\$130.25	5,538	5,448	114	0
13	\$130.77	5,708	5,620	114	0
14	\$132.65	5,861	5,773	114	0
15	\$120.04	6,057	5,971	114	0
16	\$130.78	6,302	6,218	114	0
17	\$126.57	6,519	6,438	114	0
18	\$123.66	6,665	6,585	114	0
19	\$128.22	6,742	6,663	114	0
20	\$130.98	6,798	6,719	114	0
21	\$131.19	6,857	6,779	114	0
22	\$130.98	6,849	6,758	127	0
23	\$130.98	6,856	6,750	142	0
24	\$128.20	6,796	6,680	152	0
25	\$127.89	6,774	6,657	152	0
26	\$130.98	6,779	6,663	152	0
27	\$130.98	6,826	6,710	152	0
28	\$138.02	6,857	6,740	152	0
29	\$143.09	6,865	6,749	152	0
30	\$153.24	6,872	6,756	152	0
31	\$148.10	6,870	6,754	152	0
32	\$153.16	6,880	6,765	152	0
33	\$138.18	6,879	6,763	152	0
34	\$143.06	6,858	6,742	152	0
35	\$148.12	6,836	6,720	152	0
36	\$130.97	6,712	6,604	142	0
37	\$127.89	6,619	6,525	127	0
38	\$130.96	6,624	6,543	114	0
39	\$138.03	6,640	6,560	114	0
40	\$131.21	6,604	6,524	114	0
41	\$131.07	6,543	6,462	114	0
42	\$131.07	6,483	6,402	114	0
43	\$130.98	6,404	6,322	114	0
44	\$130.96	6,266	6,183	114	0
45	\$129.21	6,126	6,042	114	0
46	\$120.31	6,001	5,915	114	0
47	\$116.15	5,867	5,781	114	0
48	\$114.43	5,782	5,694	114	0

Disclaimer

This Report is prepared and provided for general information purposes only. Information in this Report was obtained or derived from sources that the Energy Market Company Pte Ltd (EMC) considers reliable. All reasonable care has been taken to ensure that stated facts are accurate and opinions fair and reasonable at time of printing. EMC does not represent that information in this Report is accurate or complete and it should not be relied upon as such. In particular, in presentation of charts, certain assumptions were made which may not be stated therein. As such, EMC assumes no fiduciary responsibility or liability for any construction or interpretation you may take based on the information contained nor for any consequences, financial or otherwise, from transactions where information in this Report may be relied upon. You should make your own appraisal and should consult, to the extent necessary, your own professional advisors to ensure that any decision made based on the information in this Report is suitable for your circumstances.

If you have any specific queries about this Report or its contents, you should contact us at marketoperations-B@emcsg.com.