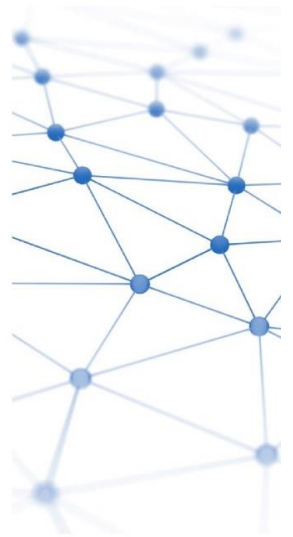
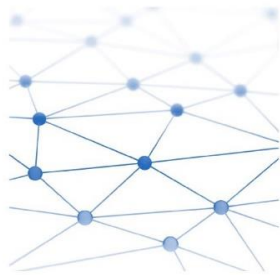


Monthly Trading Report

July 2021



July Market Overview



USEP
\$167.04/MWh

	Weekdays	Saturday	Sunday
Daily Average	188.44	121.31	122.89
Daily Maximum	1,514.86	301.24	504.53
Daily Minimum	86.34	92.16	91.29

(in \$/MWh)



Forecasted Demand
6,266MW

	Weekdays	Saturday	Sunday
Daily Average	6,401	6,059	5,906
Daily Maximum	7,160	6,531	6,572
Daily Minimum	5,141	5,374	5,204

(in MW)



Total Supply
7,978MW

	Weekdays	Saturday	Sunday
Daily Average	8,049	7,838	7,817
Daily Maximum	8,660	8,101	8,011
Daily Minimum	7,405	7,515	7,562

(in MW)



Ancillary Prices

	Weekdays	Saturday	Sunday
Primary Res	0.47	0.77	0.60
Contingency Res	20.19	19.27	16.66
Regulation	19.89	19.07	13.82

(in \$/MWh)

Forecasted Demand, USEP

Figure 1: Forecasted Demand vs USEP for This Month

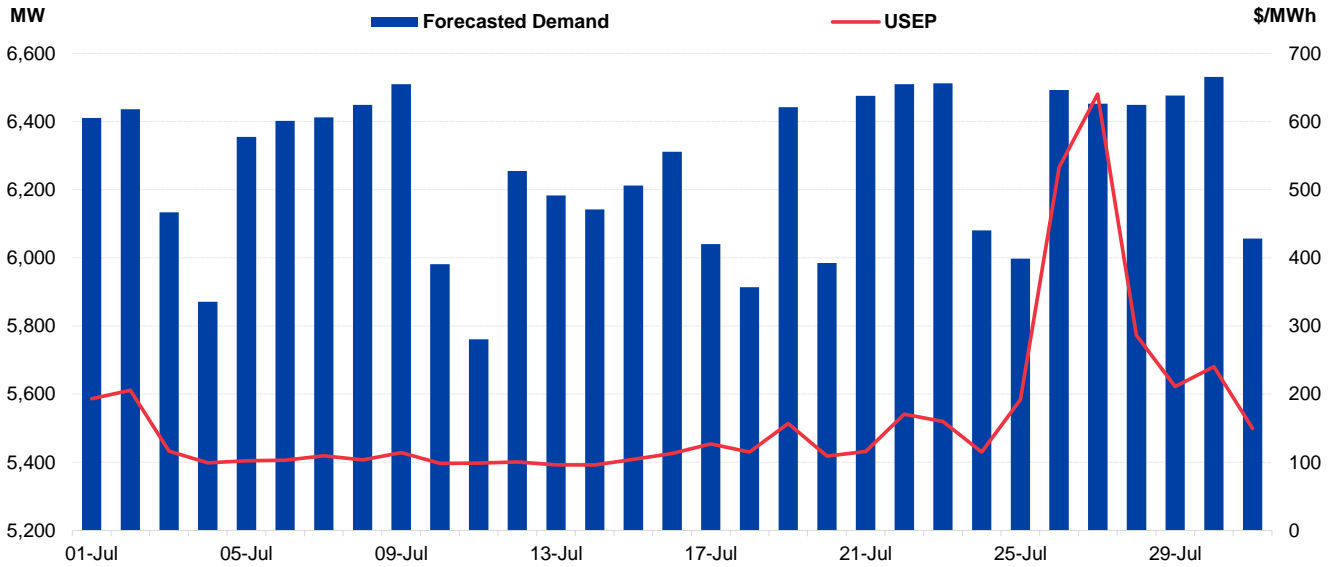


Figure 2: Forecasted Demand vs USEP for Last 12 Months

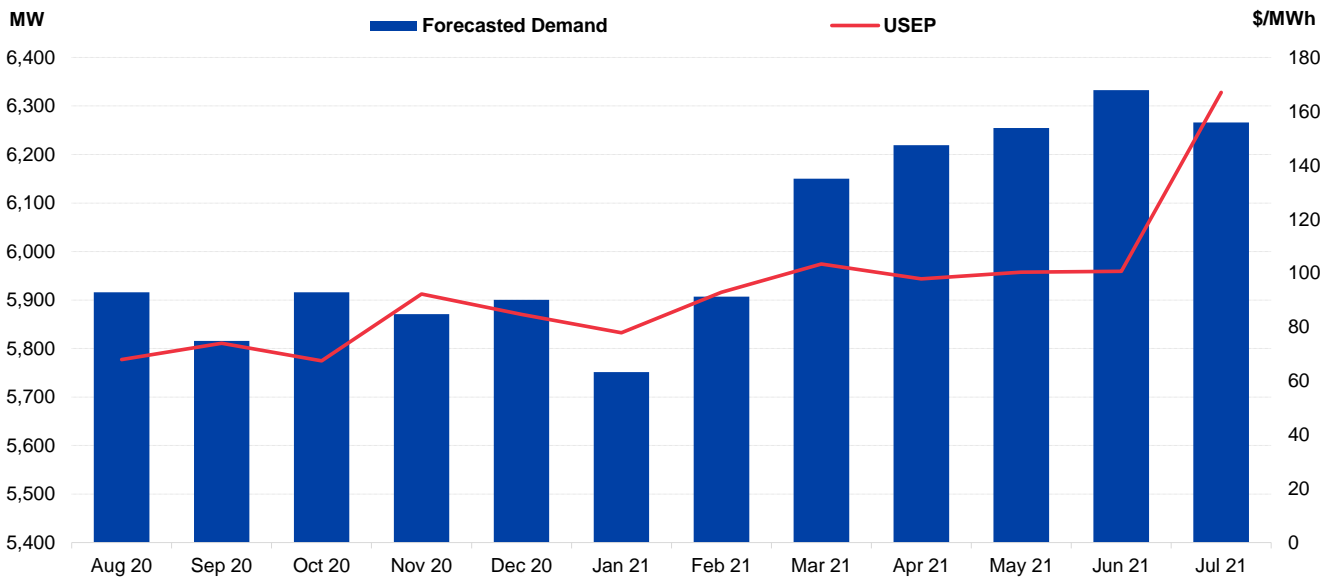


Figure 3: Average Generation by Type for This Month

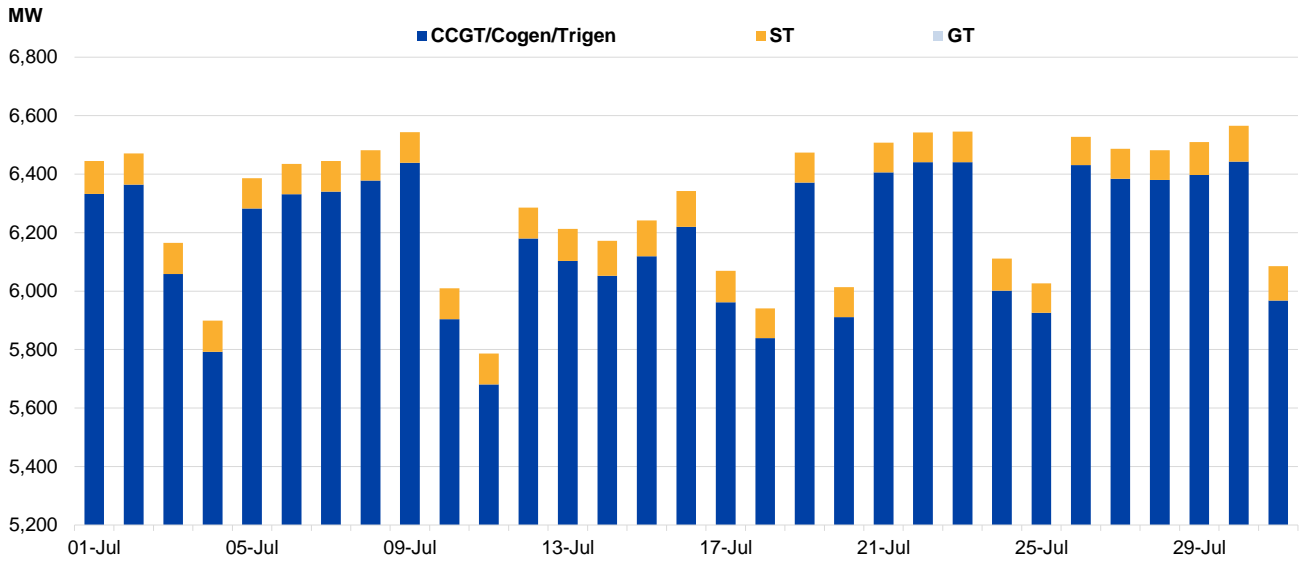


Figure 4: Average Generation by Type for Last 12 Months

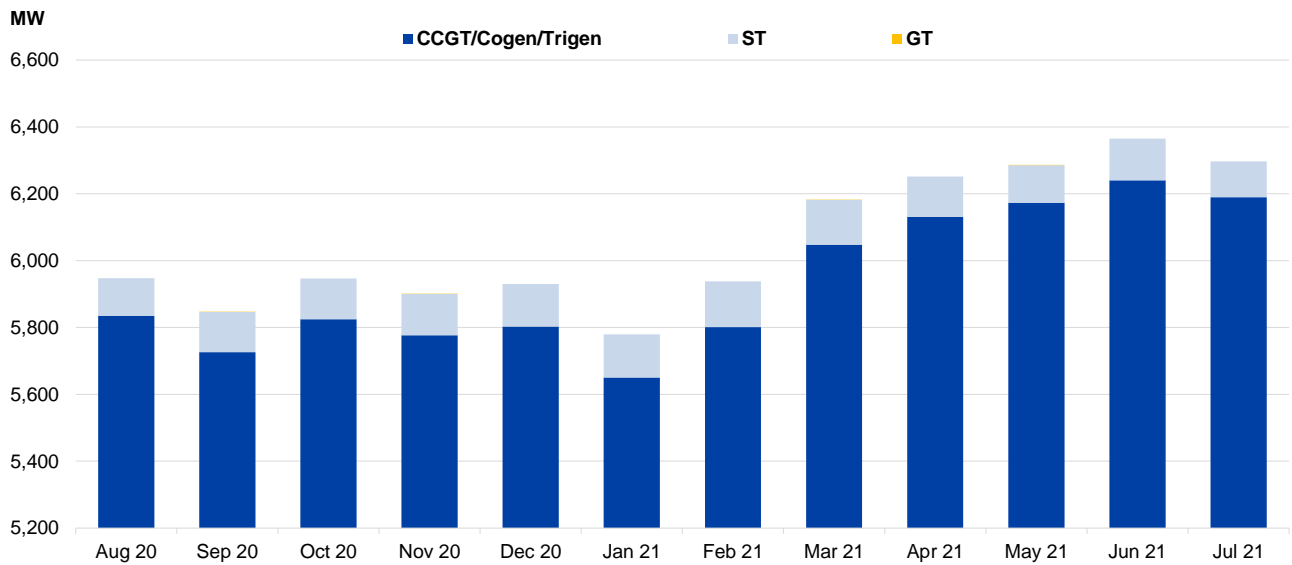


Figure 5: YOY % Change of USEP and Forecasted Demand

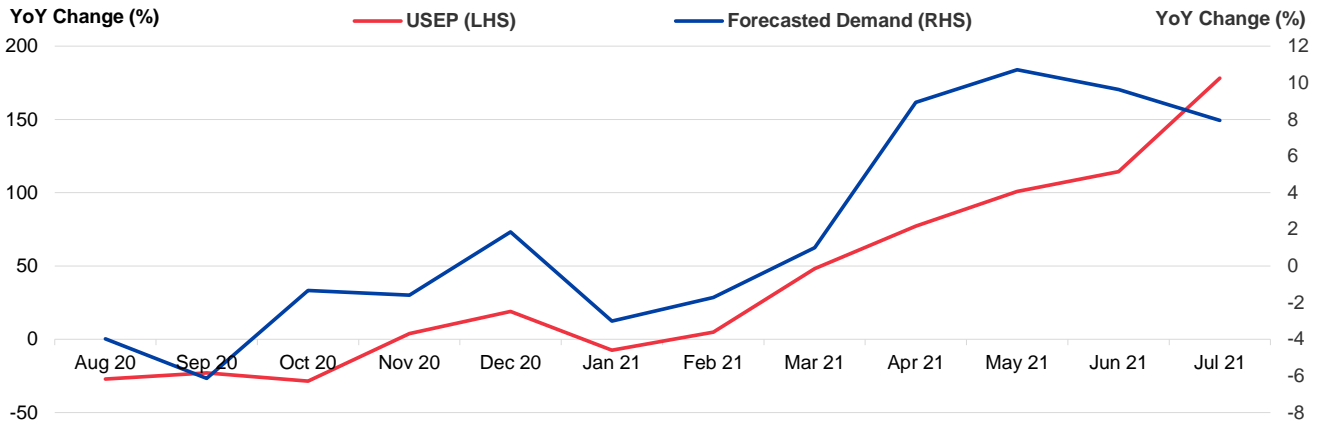


Figure 6: Ancillary Prices

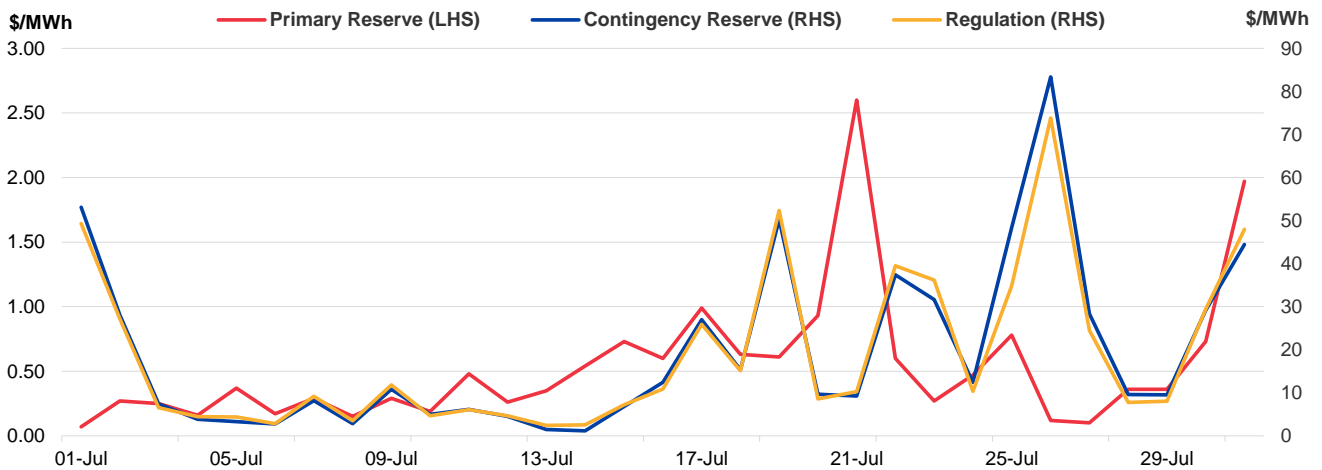


Figure 7: Monthly Payment for Last 12 Months

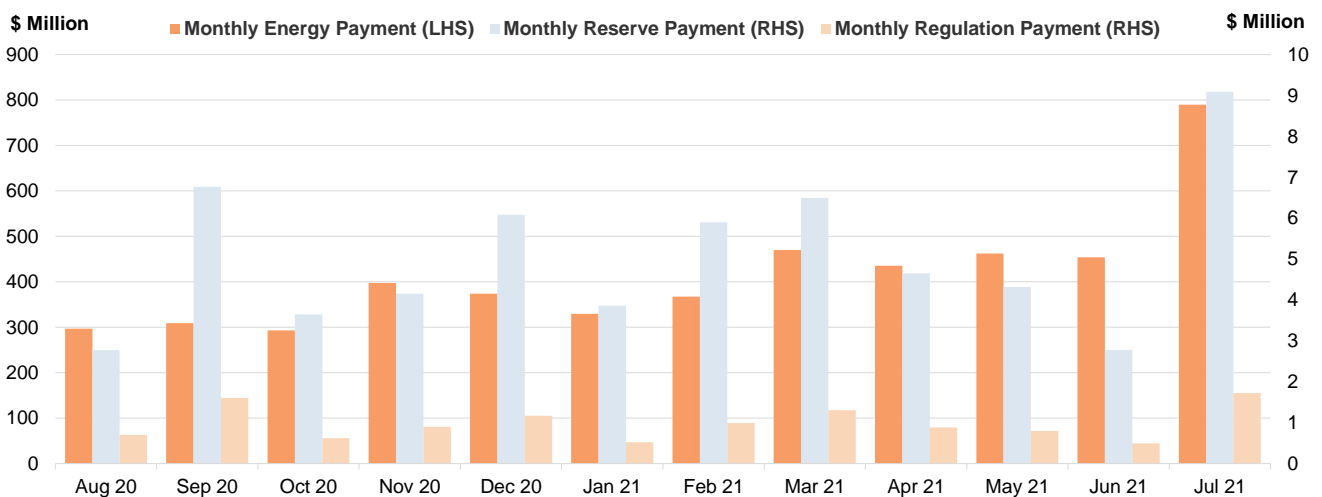


Figure 8: Price Statistics for Year 2021

	USEP (\$/MWh)			Forecasted Demand (MW)			Generation (%)		
	Average	Min	Max	Average	Min	Max	CCGT/Cogen/Trigen	ST	GT
Jan	77.81	30.36	140.95	5,751	4,617	6,680	97.77	2.23	0.00
Feb	92.91	69.11	338.30	5,907	4,820	6,821	97.71	2.29	0.00
Mar	103.35	71.21	430.56	6,150	5,075	7,079	97.83	2.17	0.00
Apr	97.86	74.59	662.39	6,219	5,138	7,124	98.07	1.93	0.00
May	100.31	82.51	1008.48	6,255	5,193	7,235	98.20	1.79	0.00
Jun	100.61	84.04	433.89	6,333	5,183	7,209	98.04	1.96	0.00
Jul	167.04	86.34	1514.86	6,266	5,141	7,160	98.29	1.71	0.00
Aug	-	-	-	-	-	-	-	-	-
Sep	-	-	-	-	-	-	-	-	-
Oct	-	-	-	-	-	-	-	-	-
Nov	-	-	-	-	-	-	-	-	-
Dec	-	-	-	-	-	-	-	-	-
Yearly	105.94	30.36	1514.86	6,127	4,617	7,235	97.99	2.01	0.00
Q1	91.31	30.36	430.56	5,937	4,617	7,079	97.77	2.23	0.00
Q2	99.60	74.59	1008.48	6,269	5,138	7,235	98.11	1.89	0.00
Q3	167.04	86.34	1514.86	6,266	5,141	7,160	98.29	1.71	0.00
Q4	-	-	-	-	-	-	-	-	-

	Average Price (\$/MWh)			Average Requirements (MW)		
	Primary Reserve	Contingency Reserve	Regulation	Primary Reserve	Contingency Reserve	Regulation
Jan	0.85	8.22	5.19	168	583	123
Feb	1.13	13.89	11.83	173	603	114
Mar	0.45	14.00	14.03	164	602	114
Apr	0.42	10.43	9.98	166	602	114
May	0.53	9.08	8.77	180	615	114
Jun	0.45	6.09	5.55	174	606	114
Jul	0.54	19.47	18.78	172	610	114
Aug	-	-	-	-	-	-
Sep	-	-	-	-	-	-
Oct	-	-	-	-	-	-
Nov	-	-	-	-	-	-
Dec	-	-	-	-	-	-
Yearly	0.62	11.60	10.60	171	603	114
Q1	0.80	11.97	10.30	168	596	114
Q2	0.47	8.54	8.11	173	608	114
Q3	0.54	19.47	18.78	172	610	114
Q4	-	-	-	-	-	-

Figure 9: Vesting Price, Tariffs and WEP for Year 2021

	Vesting Price		Domestic Electricity Tariffs (¢/kWh)	Average WEP (\$/MWh)	WEP Components (\$/MWh)					
	BVP (\$/MWh)	LVP (\$/MWh)			USEP	AFP	HEUC	MEUC	EMC Fees	PSO Fees
Jan	125.67	129.57	20.76	77.98	77.81	0.11	-0.72	0.18	0.34	0.26
Feb	125.67	129.57	20.76	92.74	92.91	0.22	-1.20	0.19	0.34	0.28
Mar	125.67	129.57	20.76	103.18	103.35	0.25	-1.12	0.07	0.38	0.25
Apr	145.43	151.80	22.55	98.11	97.86	0.17	-0.83	0.21	0.38	0.31
May	145.43	151.80	22.55	100.52	100.31	0.15	-0.82	0.21	0.38	0.30
Jun	145.43	151.80	22.55	100.67	100.61	0.10	-0.92	0.20	0.38	0.30
Jul	152.13	159.95	23.38	166.52	167.04	0.33	-1.62	0.13	0.35	0.29
Aug	-	-	-	-	-	-	-	-	-	-
Sep	-	-	-	-	-	-	-	-	-	-
Oct	-	-	-	-	-	-	-	-	-	-
Nov	-	-	-	-	-	-	-	-	-	-
Dec	-	-	-	-	-	-	-	-	-	-
Yearly	137.92	143.44	21.90	105.67	105.70	0.19	-1.03	0.17	0.36	0.28
Q1	125.67	129.57	20.76	91.30	91.36	0.19	-1.01	0.15	0.35	0.26
Q2	145.43	151.80	22.55	99.77	99.60	0.14	-0.86	0.21	0.38	0.30
Q3	152.13	159.95	23.38	166.52	167.04	0.33	-1.62	0.13	0.35	0.29
Q4	-	-	-	-	-	-	-	-	-	-

Disclaimer

This Report is prepared and provided for general information purposes only. Information in this Report was obtained or derived from sources that the Energy Market Company Pte Ltd (EMC) considers reliable. All reasonable care has been taken to ensure that stated facts are accurate and opinions fair and reasonable at time of printing. EMC does not represent that information in this Report is accurate or complete and it should not be relied upon as such. In particular, in presentation of charts, certain assumptions were made which may not be stated therein. As such, EMC assumes no fiduciary responsibility or liability for any construction or interpretation you may take based on the information contained nor for any consequences, financial or otherwise, from transactions where information in this Report may be relied upon. You should make your own appraisal and should consult, to the extent necessary, your own professional advisors to ensure that any decision made based on the information in this Report is suitable for your circumstances. If you have any specific queries about this Report or its contents, you should contact us at marketoperations-B@emcsg.com.